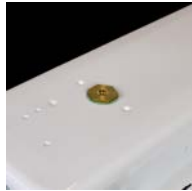




TITAN LED - Feet mount with clear diffused + Translucent Optic



No feet version blind mounting hole



Earthing point



Stainless steel gland & blind plugs

TITAN



FINISHES

- Deep drawn 316 stainless-steel luminaire for harsh environments
- LED or linear fluorescent options
- IP66 / IP67

OVERVIEW

Heavy duty luminaire designed for a range of harsh & corrosive environments.

DESIGN

Marine grade 316 stainless steel, deep drawn, seamless housing, finished in white powder-coat. Choice of mounting with 'feet' or 'no feet' versions. Marine-grade 316 stainless steel diffuser clips. Two cable entries at each end; luminaire supplied standard with 1 x M20 stainless-steel cable gland and 3 x M20 stainless-steel blind plugs. Additional cable glands may be ordered as required. Fluorescent version with screw-lock, vibration resistant lampholders.

OPTIC

High impact resistant polycarbonate diffuser, fully gasketed to housing via silicone 'O'-ring. Fluorescent version with nylon lanyard, LED versions with positive retention clips. Clear diffuser for fluorescent versions; LED versions feature choice of either clear diffuser with translucent optic or opal diffuser.

ELECTRICAL

Fluorescent version with integral 240V 50Hz ballast. Opal diffused LED version with integral 240V 50Hz driver. Clear diffused (translucent optic) LED version with integral 110-240V 50/60Hz driver. Fluorescent version with removable gear tray with 3 pole disconnect installation coupler, and connection terminals up to 1x4mm².

EMERGENCY

Emergency lighting versions available. Classifications as per code table.

LIGHT SOURCE

Choice of high-efficiency LED source - 4000K, CRI80, or fluorescent T5 or T8 versions.

VERSION	SOURCE	MOUNTING FEET	DIFFUSER	OUTPUT (LM) 1	WATTAGE	EMERGENCY MODE	CODE	DIMENSIONS
Image 1	LED	Yes	Clear + Translucent	2200	20W	N/A	TITANSSLED2400	Diagram 1
Image 2	LED	No	Clear + Translucent	2200	20W	N/A	TITANSSLED2400NF	Diagram 2
Image 3	LED	Yes	Opal	2200	20W (Max.)	N/A	TITAN600LED	Diagram 1
Image 3	LED	Yes	Opal	4400	40W (Max.)	N/A	TITAN1200LED	Diagram 3
Image 3	LED	Yes	Opal	4400	40W (Max.)	Maintained (C0:D50, C90:D25)	TITAN1200LEDEM	Diagram 3
Image 4	T5	Yes	Clear	N/A	2x14W	N/A	TITAN2X14	Diagram 1
Image 4	T8	Yes	Clear	N/A	2x18W	N/A	TITAN2X18	Diagram 1
Image 4	T8	Yes	Clear	N/A	2x18W	Maintained (C0:D40, C90:B40)	TITAN2X18EM	Diagram 1
Image 4	T5	Yes	Clear	N/A	2x28W	N/A	TITAN2X28	Diagram 3
Image 4	T5	Yes	Clear	N/A	2x28W	Maintained (C0:E32, C90:C32)	TITAN2X28EM	Diagram 3
Image 4	T8	Yes	Clear	N/A	2x36W	N/A	TITAN2X36	Diagram 3
Image 4	T8	Yes	Clear	N/A	2x36W	Maintained (C0:D40, C90:C40)	TITAN2X36EM	Diagram 3
Image 4	T5	Yes	Clear	N/A	2x54W	N/A	TITAN2X54	Diagram 3

1 Chip lumens

VERSION



IMAGE 1



IMAGE 2



IMAGE 3



IMAGE 4



DIAGRAM

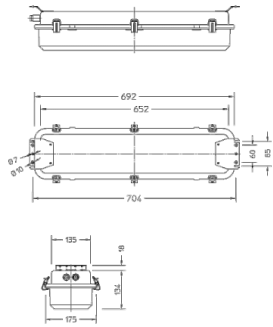


DIAGRAM 1

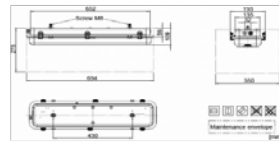


DIAGRAM 2

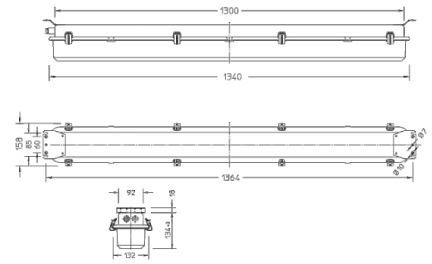


DIAGRAM 3

VERSION	DESCRIPTION	CODE	DIMENSIONS
No Image	Extra M20 stainless-steel cable gland(s) ₁	GLAND	No Diagram
No Image	Tamper proof latches	suffix '/TPL'	No Diagram