

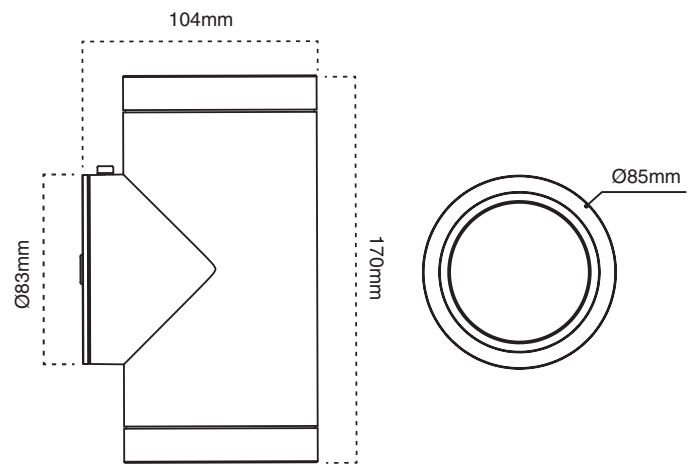
atom

INSTALLATION SHEET

LED WALL LIGHT

AT5010/TRI

SAMBA LED Up/Down Wall light, Tri-CCT.



Product Specification

Voltage		220-240V~ 50Hz	
Power Consumption		10W	
Light colour options	Warm white	Cool white	Daylight
Colour temperature	3000K	4000K	5700K
Lumen output*	900lm	1000lm	940lm
Colour Rendering Index		>80	
Dimmable		No	
Warranty		3 Years	
Working Temperature		-20 to 40 °C	
IP Rating		IP65	
IK Rating		IK06	

Product Range

Code	Product Code	Finish
AT5010/CHA/TRI	11782	Charcoal

SAFETY INFORMATION

Luminaires must be installed and fitted by a qualified electrician ensuring the installation complies to the current wiring regulations.

Ensure all electrical connections are secure and that there are no loose strands.

Do not install this product on damp or newly plastered walls.

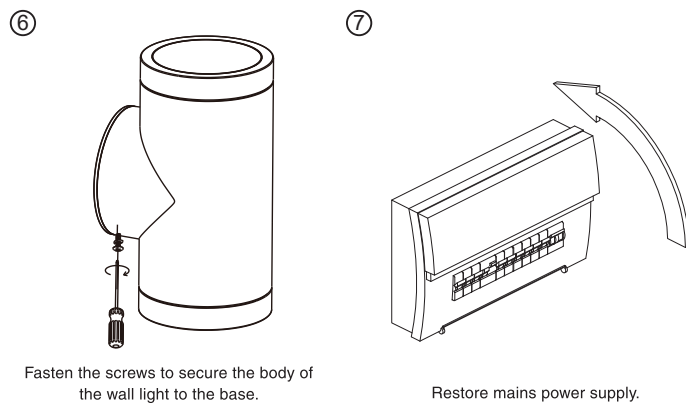
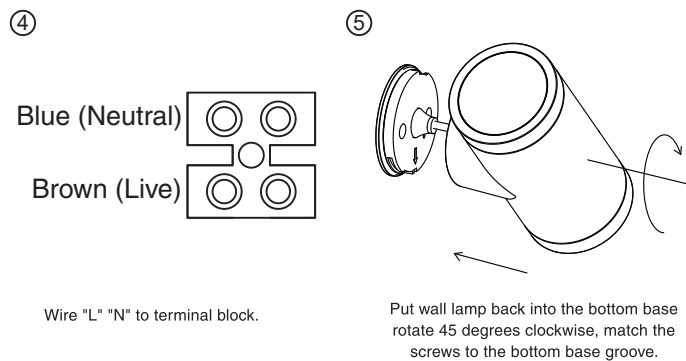
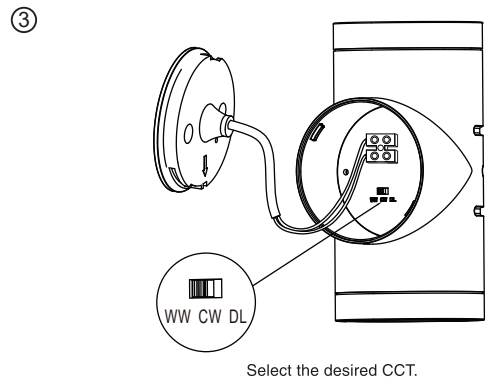
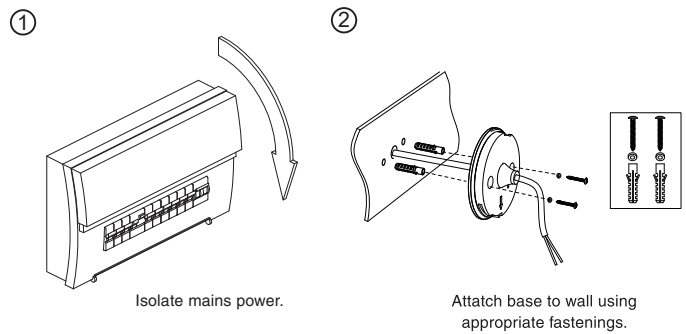
Always ensure there is adequate ventilation around the driver at all times.

This product may contain substances that can be hazardous to the environment if not disposed of properly. Electrical and electronic equipment should never be disposed of with general household waste but must be separated of it's correct treatment and recovery. Where possible recycle your packaging. Please keep these instructions safe for future reference.

Installation

Read instructions and check you have all the tools and accessories to complete the installation correctly.

1. Isolate the mains power supply before commencing installation.
2. Attach base to wall using appropriate fastenings.
3. Select the desired CCT via switch located on back of product.
4. Wire "L" "N" to terminal block.
5. Attach luminaire to base, rotate 45° clockwise matching the screws to the bottom groove.
6. Fasten the screws to secure the body of the wall light to the base.
7. Restore mains power supply.



Warranty

Atom products are distributed in Australia by Atom Pty Ltd (Atom). The Australian Consumer Law as well as other Australian laws guarantee certain conditions, warranties and undertakings, and give you other legal rights, in relation to the quality and fitness for purpose of Atom products sold in Australia.

In Australia, our goods come with guarantees that cannot be excluded under the Australian Consumer Law. You are entitled to a replacement or refund for a major failure and compensation for any other reasonably foreseeable loss or damage. You are also entitled to have the goods repaired or replaced if the goods fail to be of acceptable quality and the failure does not amount to a major failure. What constitutes a major failure is set out in the Australian Consumer Law.

Nothing in this Warranty purports to modify or exclude the conditions, warranties and undertakings, and other legal rights, under the Australian Competition and Consumer Act and other Australian laws. Atom products are warranted in Australia for a period specified on packaging from the date of delivery of the product, provided that the products are properly stored, installed, used and maintained in accordance with the instructions contained within their manual.

Products that have been altered in any way or used other than in accordance with their instructions are not covered by this Warranty.

This Warranty is not transferable and is valid only in the hands of the purchaser of the product. The warranty does not cover Atom products other than those purchased from Atom. Proof of purchase must be provided to Atom with any warranty claim. Atom recommends that the purchaser attaches their proof of purchase to their product manual.

If you wish to claim under this Warranty, you must, at your own expense, return the product or that part of the product which you believe is defective, and proof of original purchase, your name, address and telephone number and a certificate installation or other document required by the law for the installation of electrical products in the place in which the product was installed, to Atom at the address above within the warranty period from the date of purchase.

Please note that the Warranty does not cover removal or re-installation of the product or that part of the product which you believe is defective.

Atom's total liability under this Warranty is limited to the cost of repair or replacement of the faulty product. Atom may satisfy its obligations under this Warranty in full by repair or replacement of a faulty product. This Warranty does not apply to consumable items such as lamps or batteries or other items that can be classified as consumable.

For the avoidance of any doubt, any and all warranties or conditions which are not guaranteed under the Australian Competition and Consumer Act or the Australian Competition and Consumer Regulations 2010 and which are not expressly included in this Warranty as additional warranties or conditions are excluded.

This Warranty does not cover loss or damage caused by wear and tear, misuse, incorrect installation or operation, failure to clean and maintain, incorrect voltage or non-authorized electrical connections, adverse external conditions (such as power surges and dips, acts of God, exposure to heat, corrosion, insect or vermin infestation), use of non-authorized or defective parts or globes, or to items that have been repaired other than by Atom or a repairer approved by Atom.

V1.0

Atom is a registered brand of Evolt Pty Limited.

IMPORTANT: THIS PRODUCT MUST BE INSTALLED BY A LICENSED ELECTRICIAN

Due to changes in industry standards and Evolt's policy of continual product development, product specifications are subject to change without notice.
Images are for illustrative purposes only.

For further information please call Evolt's head office on 1300 4EVOLT (438 658)
Evolt Pty Limited PO BOX 271 KINGSGROVE NSW 1480
ABN 83 112 123 529
www.evolt.com.au

evolt