



### Polystyrene Plugs (QLD only)

VINIDEX CODE	SIZE (mm)	CRATE QTY	MIN QTY
32250	40	-	1
32270	80	100	1
32280	100	15	1
32285	125	1	1
32290	150	1	1

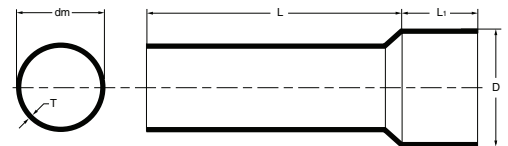
### Slip Couplings - Communications

VINIDEX CODE	SIZE (mm)	LENGTH (mm)	CARTON QTY	MIN QTY
33129	80	315	1	1
32915	50	200	50	1
31243	100	300	16	1



### Telstra Product Range

Vinidex manufacture for Telstra a range of pipe, fittings and accessories for communications.



### Conduit

VINIDEX CODE	SIZE (mm)	MEAN O.D. Dm (mm)	WALL THICKNESS T (mm)	MEAN MOUTH DIAMETER D (mm)	TELSTRA CODE	SOCKET LENGTH L1 (mm)	LENGTH L (m)	BUNDLE QTY	CRATE QTY
11710	20	26.8	1.8	31	73/91	38	4.5	10	700
11730	50	60.4	3.1	68	73/95	64	4.5	5	167
11760	100	114.2	4.6	124	73/207	102	4.5	-	57

### Subduct

VINIDEX CODE	SIZE (mm)	TELSTRA CODE	CLASS	LENGTH (m)	MINIMUM QTY
23150	32	73/107	6	250	1
*23147	32	73/107	6	2200	1

\*THIS PRODUCT IS SUPPLIED ON DRUMS & DEPOSIT WILL BE REQUIRED. MINIMUM ORDER OF 6 DRUMS

### Pit Bush

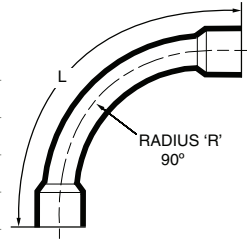
VINIDEX CODE	SIZE (mm)	TELSTRA CODE	CARTON QTY	BAG QTY	MINIMUM QTY
30115	20	73/100	-	20	20
30130	50	73/70	-	20	20
98870	63	73/143	200	-	1
30150	100	73/102	60	-	1

### End Caps

VINIDEX CODE	SIZE (mm)	TELSTRA CODE	CARTON QTY	BAG QTY	MINIMUM QTY
30100	20	73/58	200	-	20
30105	50	73/60	80	10	10

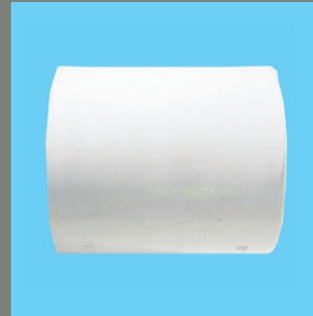
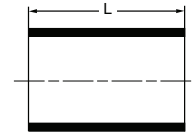
### Bends

VINIDEX CODE	SIZE (mm)	TELSTRA CODE	DEGREE	C'LINE RADIUS	MINIMUM QTY
30110	20	73/281	90	100	1
32570	20	73/271	90	305	1
33370	50	73/119	45	305	1
32550	50	73/276	90	305	1
32553	50	73/110	90	800	1
33208	100	73/286	90	356	1
33210	100	73/302	90	508	1
33219	100	73/109	90	800	1



### Coupling

VINIDEX CODE	SIZE (mm)	TELSTRA CODE	TYPE	CARTON QTY	BAG QTY	MINIMUM QTY
30205	20	73/37		400	20	20
30230	50	73/48		100	10	10
32710	100	73/241	TYPE 1	-	20	-
32240	110 x 110	73/243	COMMS - PE	-	25	-



### Joiner

VINIDEX CODE	SIZE (mm)	TELSTRA CODE	TYPE	CARTON QTY	MINIMUM QTY
33438	63-50	73/176	PVC	100	1
33446	100 x 110	73/185	PVC - PE	25	1

### Plugs

VINIDEX CODE	SIZE (mm)	TELSTRA CODE	TYPE	CARTON QTY	MINIMUM QTY
30050	20	73/216		800	1
30655	50	73/218		150	1
98911	100	73/44	TAPERED PLUG	75	1

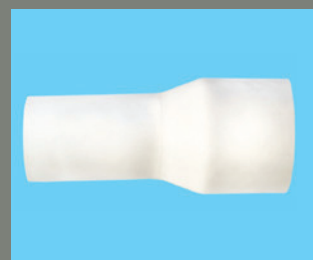
### Bellmouth

VINIDEX CODE	SIZE (mm)	TELSTRA CODE	CARTON QTY	MINIMUM QTY
31355	100	73/52	24	1



### Adaptor - Communications Socket x Telecom Pipe Socket

VINIDEX CODE	SIZE (mm)	CRATE QTY	MINIMUM QTY
33430	20	-	1
33436	50	-	1
*33442	63-50	-	1
33446	100	25	1



\*POLY FITTING - REDUCING

All fittings subject to availability. Please contact Vinidex to confirm QTYs shown.

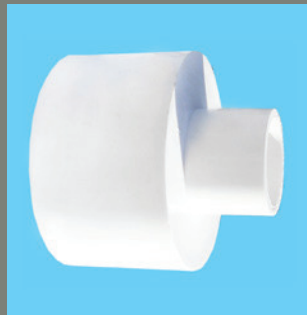


### Split Coupling

VINIDEX CODE	SIZE (mm)	CARTON QTY	MINIMUM QTY
39614	100	10	1

### Reducing Coupling

VINIDEX CODE	SIZE (mm)	TELSTRA CODE	BAG QTY	CARTON QTY	MINIMUM QTY
34990	50X20	73/179	10	100	10
35060	100X50	73/180	-	28	1
35070	100X80	73/311	-	28	1



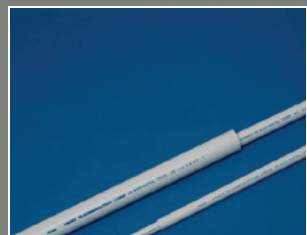
### Reducer

VINIDEX CODE	SIZE (mm)	TELSTRA CODE	CARTON QTY	MINIMUM QTY
33437	50X35	73/309	50	1



### Slip Sleeve

VINIDEX CODE	SIZE (mm)	TELSTRA CODE	CARTON QTY	MINIMUM QTY
33063	20	73/56	50	1
33068	50	73/116	100	1



### Repair Sleeve

VINIDEX CODE	SIZE (mm)	TELSTRA CODE	CARTON QTY	MINIMUM QTY
33455	20	73/305	75	1
33460	35	73/306	40	1
33470	50	73/307	25	1
33472	80	73/308	12	1
33475	100	73/285	12	1

## Split Bush

VINIDEX CODE	SIZE (mm)	TELSTRA CODE	MINIMUM QTY
98891	20	73/188	20
98893	50	73/190	20



## Cable Bearers

VINIDEX CODE	SIZE (mm)	TELSTRA CODE	TYPE	MINIMUM QTY
39618	225	426/07		1
39619	370	426/08		1
39620	480	426/09		1
39626			GALVANISED CABLE SUPPORT BRACKET	1



## Pits, Lids and Accessories

VINIDEX CODE	SIZE (mm)	TELSTRA CODE	TYPE	PIT SIZE	MINIMUM QTY
98881		99/01	PIT GASKETS	P2	1
98884		99/177	PIT GASKETS	P5	1
98886		99/164	PIT GASKETS	P6	1
98700	515 X 235 X 400		PIT BODY	P1	1
98720	660 X 285 X 570	99/98	PIT BODY	P2	1
98740	780 X 345 X 630		PIT BODY	P3	1
98760	710 X 400 X 830		PIT BODY	P4	1
98800	1365 X 550 X 670	99/161	PIT BODY	P6	1
98860	2040 X 585 X 900	99/163	PIT BODY	P9	1
98781	580 X 330 X 640	99/165B	PIT BODY (BTR)	P5	1
98710	473 X 40 X 193		PIT CONC COVER	P1	1
98722	616 X 46 X 245	99/59	PIT CONC COVER	P2	1
98745	730 X 50 X 298		PIT CONC COVER	P3	1
98765	651 X 50 X 346		PIT CONC COVER	P4	1
98790	651 X 50 X 400	99/166	PIT CONC COVER	P5	1
98810	651 X 50 X 499	99/62	PIT CONC COVER	P6	1
98795	710 X 455 X 225	99/173	PIT EXTN COLLAR	P5	1
98815	1365 X 505 X 280	99/169	PIT EXTN COLLAR	P6	1
98817	1220 X 450 X 570	99/67	PIT CROSSBARDI	P6	1
98819	1220 X 450 X 570		PIT EARTH STRAP	P6	1
98867	200	77/106	CONCRETE PILLAR BASE		1
98865		99/174	REINSTATEMENT KIT TE 1051 XA		1
33154	200	77/102	JNTNG POST O'LAY TSTR		1
39615			EARTHING KIT MANHOLE - 9M WIRE		1
23997	650 x 1000		TRAFFIC PIT		1
98900			316SS HEX SCREWS		1





### Rope

VINIDEX CODE	TELSTRA CODE	TYPE	SIZE (m)m	LENGTH (m)	MINIMUM QTY
98890	675/294	2 ST BLUE, 1 ST YELLOW PP	6	400	1
98880	675/83	POLYPROPYLENE ROPE	3	1000	1

### Warning Signs

VINIDEX CODE	TELSTRA CODE	TYPE	MINIMUM QTY
39603	148/276	SIGN - DANGER NON STD ELECT	1
39604	148/277	SIGN - WARNING GAS MAIN	1
39605	148/278	SIGN - WARNING WATER MAIN	1



### Visual Early Warning Tape - Orange

VINIDEX CODE	NOMINAL SIZE (mm)	LENGTH (m)	MINIMUM QTY
85053	150	500	1