

A slim profile square sided batten range, with a selection of attachments available to suit a variety of lighting applications



- Built-in end cap spacer for easy accurate in-line mounting
- Double keyhole mounting holes
- Single and twin lamp options with bare or diffused options
- Fused terminal block standard for high frequency
- Variety of attachments include:
 - Dispersive reflector
 - Slotted reflector
 - Closed end reflector
 - Asymmetric reflector
 - Wireguard

Materials/Finish

Body: steel painted white.
End caps: Injection moulded polycarbonate in white.
Diffuser: acrylic prismatic.

Installation/Mounting

2-way and earth terminal block with capacity for 2 x 2.5mm² cables. For installation in normal dry indoor atmospheres.

Specification

To specify state:
Slim cross section Fluorescent batten with clip on plate with earthing fixation and diffuser attachments for 18/36/58W T26 linear fluorescent lamps. As Thorn Cadet.



Single Cadet batten



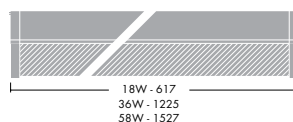
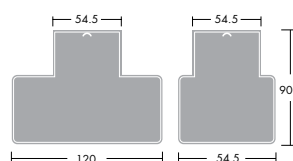
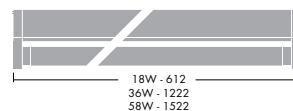
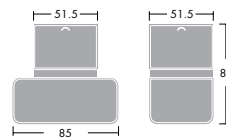
Twin Cadet batten



Single Cadet diffused batten



Twin Cadet diffused batten



Dispersive Reflector

- Open ended white finished metal reflector
- Attachment for Cadet Batten

Slotted Reflector

- Open ended industrial metal reflector with slots to give upward light
- Attachment for Cadet Batten

Closed end reflector

- Enclosed industrial metal reflector
- Attachment for Cadet Batten

Angle Reflector

- Asymmetric or right angle reflector
- Attachment for Cadet Batten

Wire Guard

- Sturdy white painted guard
- Complete with mounting brackets which allow the guard to be hinged from either side for easy installation and maintenance



Dispersive reflector



Slotted reflector



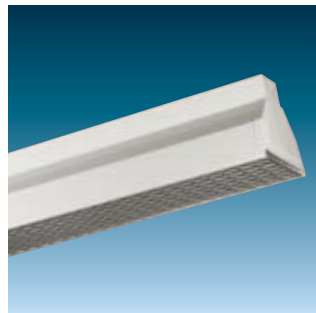
Closed end reflector



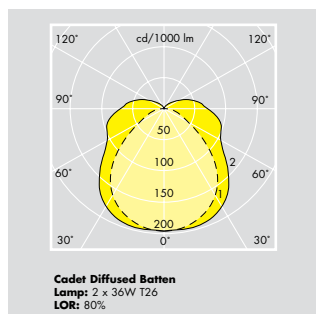
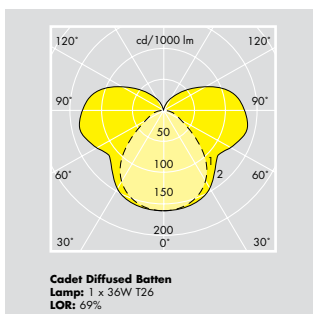
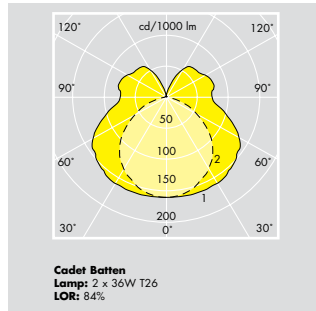
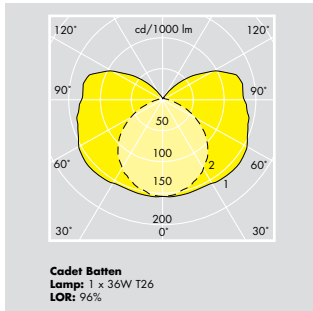
Angle reflector



Wire guard



Closed end reflector with wire guard



Ordering Guide Supplied complete with lamp.

Description	Ilcos Code	Socket	Wt (kg)	Cat. No.	SAP Code
Batten					
CADET BARE 1X18W HPF	FD	G13	1.8	CB118H	96015598
CADET BARE 1X30W HPF	FD	G13	2.1	CB130H	96015617
CADET BARE 1X36W HPF	FD	G13	2.2	CB136H	96015643
CADET BARE 1X58W HPF	FD	G13	2.6	CB158H	96015674
CADET BARE 2X18W HPF	FD	G13	1.9	CB218H	96015682
CADET BARE 2X36W HPF	FD	G13	3.2	CB236H	96015707
CADET BARE 2X58W HPF	FD	G13	3.7	CB258H	96015725
CADET DIAM 1X18W HPF	FD	G13	1.9	CBDN118H	96015738
CADET DIAM 1X36W HPF	FD	G13	2.3	CBDN136H	96015754
CADET DIAM 1X58W HPF	FD	G13	2.7	CBDN158H	96015772
CADET DIAM 2X18W HPF	FD	G13	2.0	CBDN218H	96015778
CADET DIAM 2X36W HPF	FD	G13	3.3	CBDN236H	96015794
CADET DIAM 2X58W HPF	FD	G13	3.8	CBDN258H	96015817
Electronic versions					
CADET BARE 1X18W HF	FD	G13	1.6	CB118HF	96015588
CADET BARE 1X30W HF	FD	G13	1.9	CB130HF	96058270
CADET BARE 1X36W HF	FD	G13	2.0	CB136HF	96015633
CADET BARE 1X58W HF	FD	G13	2.4	CB158HF	96015671
CADET BARE 2X18W HF	FD	G13	1.7	CB218HF	96015679
CADET BARE 2X36W HF	FD	G13	3.0	CB236HF	96015700
CADET BARE 2X58W HF	FD	G13	3.5	CB258HF	96015723
Attachments*					
Dispersive reflector					
CADET DISPERSIVE REFLECTOR 18W				CBR18REF	96015823
CADET DISPERSIVE REFLECTOR 36W				CBR36REF	96015824
CADET DISPERSIVE REFLECTOR 58W				CBR58REF	96015826
Slotted reflector					
CADET SLOTTED REFLECTOR 18W				CBS18REF	96015827
CADET SLOTTED REFLECTOR 36W				CBS36REF	96015828
CADET SLOTTED REFLECTOR 58W				CBS58REF	96015829
Close end reflector					
CADET CLOSE END REFLECTOR 18W				CBCE18REF	96015732
CADET CLOSE END REFLECTOR 36W				CBCE36REF	96015733
CADET CLOSE END REFLECTOR 58W				CBCE58REF	96015734
Angle reflector					
CADET ANGLE REFLECTOR 18W				CBAR18REF	96015729
CADET ANGLE REFLECTOR 36W				CBAR36REF	96015730
CADET ANGLE REFLECTOR 58W				CBAR58REF	96015731
Wire guard					
CADET WIRE GUARD 18W				WG18W	96020715
CADET WIRE GUARD 36W				WG36W	96032346
CADET WIRE GUARD 58W				WG58W	96032348
Wire guard for close end reflector					
CADET CLOSE END WIRE GUARD 18W				CEI18WG	96030579
CADET CLOSE END WIRE GUARD 36W				CEI36WG	96030580
CADET CLOSE END WIRE GUARD 58W				CEI58WG	96030581

Emergency available to special order

*Attachments for use with bare batten only

HF - High Frequency, HPF - Magnetic, DIAM - Diffused