

Catalogue No: **XS2000-HL-3-2000-BE**

TBP MCCB 2000 FRAME 85kA 3P 2000A BASIC ELECTRONIC

Power Distribution and Protection > Circuit Breakers > Moulded Case Circuit Breakers > TemBreak PRO Moulded Case Circuit Breaker > TemBreak PRO 2000 AF > 3 Pole




Representative Photo Only
(actual product may vary based on configuration selections)

- General purpose power distribution and motor starting
- Current limiting device, reduces fault let through energy for increased installation safety
- Direct opening and indication of main contact status – maximising machine and user safety
- Complies to AS / NZS 60947-2, IEC 60947-2 and CE
- Panel mount standard, with other mounting options
- 3 or 4 pole versions
- Fault rating 85 kA
- Electronic type trip unit

SPECIFICATIONS

| | |
|--|---|
| Switching Poles | 3P |
| Component Type MCCB | MCCB AC |
| Model | XS |
| Frame Size | 2000 AF size |
| Rated Frequency | 50 / 60 Hz |
| Connection Mode | Front Connection (Option) Rear Connection (Standard) |
| Suitable for Distribution Switchboard or MCC | Yes |
| Trip Unit Rating | 2000 A |
| Trip Unit Protection Type | Electronic LSI (BE Type) |
| Ue, Rated Operational Voltage, AC, max | 690 V AC |
| Utilisation Voltage (min - max) | 24 V AC to 690 V AC |
| Uimp, Impulse Withstand Voltage | 8 kV |
| Ui, Rated Insulation Voltage | 800 V (rms) |
| In, Rated Current at 30°C | 2000 A @30°C |
| In, Rated Current at 35°C | 2000 A @35°C |
| In, Rated Current at 40°C | 2000 A @40°C |
| In, Rated Current at 45°C | 2000 A @45°C |
| In, Rated Current at 50°C | 2000 A @50°C |
| In, Rated Current at 55°C | 2000 A @55°C |
| In, Rated Current at 60°C | 1600 A @60°C |
| In, Rated Current at 65°C | 1200 A @65°C |
| Ics, Rated Service Short-Circuit Breaking Capacity, 415V AC | 65 kA @415VAC |
| Ics, Rated Service Short-Circuit Breaking Capacity, 690V AC | 42 kA @690VAC |
| Icu, Rated Ultimate Short-Circuit Breaking Capacity, 220/240V AC | 125 kA @220/240VAC |
| Icu, Rated Ultimate Short-Circuit Breaking Capacity, 415V AC | 85 kA @415VAC |

Catalogue No: **XS2000-HL-3-2000-BE**

TBP MCCB 2000 FRAME 85kA 3P 2000A BASIC ELECTRONIC

Power Distribution and Protection > Circuit Breakers > Moulded Case Circuit Breakers > TemBreak PRO Moulded Case Circuit Breaker > TemBreak PRO 2000 AF > 3 Pole



| | |
|--|---|
| Icu, Rated Ultimate Short-Circuit Breaking Capacity, 440V AC | 85 kA @440VAC |
| Icu, Rated Ultimate Short-Circuit Breaking Capacity, 660V AC | 42 kA @660VAC |
| Icu, Rated Ultimate Short-Circuit Breaking Capacity, 690V AC | 45 kA @690VAC |
| AC Power loss per pole at full rated current | 108.66 W |
| Number of Poles | 3 |
| Depth (toggle included) | 245 mm |
| Height | 450 mm |
| Width | 320 mm |
| Weight | 54 kg |
| Dielectric Strength | 2500 V AC |
| Electrical Life | 500 cycles |
| Mechanical Life | 2500 cycles |
| li INST Adjustment (min / max x In) | 3 – 12 x In |
| Short Time Delay protection (STD): Current adjustment steps | 2 - 10 x Ir |
| Terminal Type | Extension Bar With Bolt holes |
| Tightening Torque, Min | 22.5 Nm |
| Tightening Torque, Max | 37.2 Nm |
| Pollution Degree | 3 |
| DIN rail mounting with optional adapter | No |
| Mounting | Suitable for angle bracket mounting |
| Suitable for Panel Mounting | No |
| Suitable for Mounting on Chassis | No |
| Withdrawable | No |
| Standards Compliance | AS/NZS 60947-2 IEC 60947-2 |
| Rated temperature of trip unit | 50 °C |
| Storage Temperature, Min | -10 °C min |
| Storage Temperature, Max | 70 °C max |
| Operating Temperature, Min | -5 °C min |
| Operating Temperature, Max | 70 °C max |
| Relative Humidity, Max | 85 %RH |
| Icw, Rated Short Circuit Withstand Current 400/690V | 42 kA / 0.3 Sec kA / Sec |
| Ir, Thermal Trip Current, Min | 1000 A |
| Ir, Thermal Trip Current, Max | 2000 A |
| General Accessories | Alarm Switch Auxiliary Switches Handle Operators Locking Devices Mechanical Interlock Motor Operator Shunt Trip Under Voltage Trip Mechanical Interlock - Rear walking beam or cable type |
| Terminal Bar Connection | Cable or Busbar |
| Vibration Acceleration (Max.) | 19 m/s ² |
| Vibration Frequency, Operational (Max.) | 16.7 Hz |
| Vibration Duration (Max.) | 12 min |
| Certifications | CE DEKRA RCM |
| Shipping Approvals | Contact NHP |

Catalogue No: **XS2000-HL-3-2000-BE**

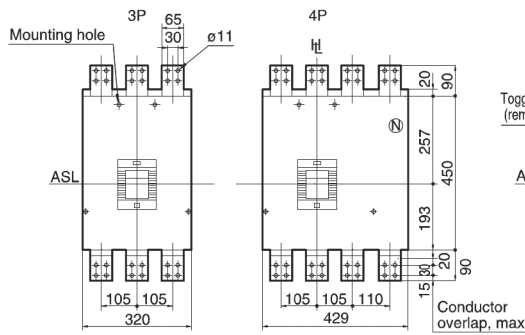
TBP MCCB 2000 FRAME 85kA 3P 2000A BASIC ELECTRONIC

Power Distribution and Protection > Circuit Breakers > Moulded Case Circuit Breakers > TemBreak PRO Moulded Case Circuit Breaker > TemBreak PRO 2000 AF > 3 Pole

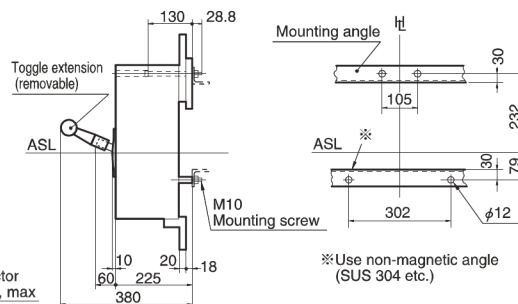


| REFERENCES | |
|---|---|
| IECEX Certificate | - |
| Supplier Declaration of Conformity: | - |
| Installation Guide: | - |
| User Manual: | - |
| Manufacturer Datasheet: | - |
| Manufacturer Catalogue & Product Selection: | - |

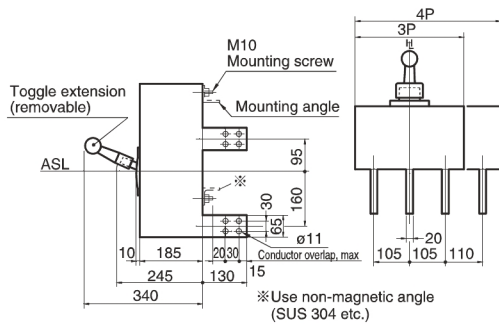
Front Connected



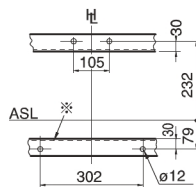
Drilling plan (front view)



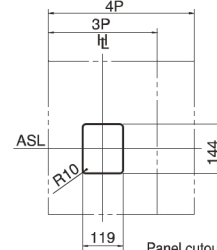
Rear Connected



Drilling plan (front view)



Panel cutout (front view)



Panel cutout dimensions shown give an allowance of 2 mm around the handle escutcheon.

Dimension Diagram