

Catalogue No: **P250-F-3-50-TM**

TBP MCCB 250 FRAME 36kA 3P 50A ADJ THERM ADJ MAG

Power Distribution and Protection > Circuit Breakers > Moulded Case Circuit Breakers > TemBreak PRO Moulded Case Circuit Breaker > TemBreak PRO 250 AF > 3 Pole



Representative Photo Only
(actual product may vary based on configuration selections)

- General purpose power distribution, motor starting as well as energy metering and communications
- Current limiting device, reduces fault let through energy for increased installation safety
- Direct opening and indication of main contact status – maximising machine and user safety
- Complies to AS / NZS 60947-2, IEC 60947-2 and CE
- Panel mount standard, with other mounting options
- 3 or 4 pole versions
- Suits XBP and XCP chassis, with panelboard options
- Fault ratings: 25, 36, 50, 70, 125 or 200 kA
- Trip unit options include thermal magnetic or electronic types

SPECIFICATIONS

Switching Poles	3P
Component Type MCCB	MCCB AC
Model	P
Frame Size	250 AF size
Rated Frequency	50 / 60 Hz
Connection Mode	Cable Tunnel Clamp (Option) Extension Bar (Option) Front Connection Plug-in PM (Option) Plug-in UPX (Option) Rear Connection (Option) Withdrawable TPDR
Suitable for Distribution Switchboard or MCC	Yes
Trip Unit Rating	50 A
Trip Unit Protection Type	Adjustable Thermal Adjustable Magnetic
Ue, Rated Operational Voltage, AC, max	690 V AC
Utilisation Voltage (min - max)	24 V AC to 690 V AC, 250 V DC
Uimp, Impulse Withstand Voltage	8 kV
Ui, Rated Insulation Voltage	800 V (rms)
In, Rated Current at 30°C	50 A @30°C
In, Rated Current at 35°C	50 A @35°C
In, Rated Current at 40°C	50 A @40°C
In, Rated Current at 45°C	50 A @45°C
In, Rated Current at 50°C	50 A @50°C
In, Rated Current at 55°C	48 A @55°C
In, Rated Current at 60°C	46 A @60°C
In, Rated Current at 65°C	44 A @65°C
In, Rated Current at 70°C	44 A @70°C
Icm, Rated Short-Circuit Making Capacity, 690V AC	6 kA
Ics, Rated Service Short-Circuit Breaking Capacity, 415V AC	36 kA @415VAC

Catalogue No: **P250-F-3-50-TM**

TBP MCCB 250 FRAME 36kA 3P 50A ADJ THERM ADJ MAG

Power Distribution and Protection > Circuit Breakers > Moulded Case Circuit Breakers > TemBreak PRO Moulded Case Circuit Breaker > TemBreak PRO 250 AF > 3 Pole



Icu, Rated Ultimate Short-Circuit Breaking Capacity, 220/240V AC	50 kA @220/240VAC
Icu, Rated Ultimate Short-Circuit Breaking Capacity, 415V AC	36 kA @415VAC
Icu, Rated Ultimate Short-Circuit Breaking Capacity, 440V AC	25 kA @440VAC
Icu, Rated Ultimate Short-Circuit Breaking Capacity, 690V AC	6 kA @690VAC
Power Loss	15 W
AC Power loss per pole at full rated current	5 W
Number of Poles	3
Depth (toggle included)	95.5 mm
Height	165 mm
Width	105 mm
Pole Width	35 mm
Weight	1.5 kg
Dielectric Strength	2500 V AC
Electrical Life	10000 cycles
Mechanical Life	30000 cycles
Thermal dial setting range Ir (x In)	0.63 - 1
Magnetic Dial setting Im (x In)	6 - 8 - 10 - 13
Cable Cross Section (Min)	35 mm ²
Cable Cross Section (Max)	185 mm ²
Terminal Type	Bolt-Terminal
Tightening Torque, Min	7.8 Nm
Tightening Torque, Max	12.7 Nm
Pollution Degree	3
DIN rail mounting with optional adapter	No
Suitable for Panel Mounting	Yes
Suitable for Mounting on Chassis	HC Chassis XBP Chassis XBPSS Chassis
Withdrawable	No
Standards Compliance	AS/NZS 60947-2 IEC 60947-2
Rated temperature of trip unit	50 °C
Storage Temperature, Min	-10 °C min
Storage Temperature, Max	70 °C max
Operating Temperature, Min	-5 °C min
Operating Temperature, Max	70 °C max
Relative Humidity, Max	85 %RH
Ir, Thermal Trip Current, Min	32 A
Ir, Thermal Trip Current, Max	50 A
Im, Magnetic Trip Current, Min	300 A
Im, Magnetic Trip Current, Max	650 A
General Accessories	Alarm Switch Auxiliary Switches Handle Operators Interpole Barriers Locking Devices Mechanical Interlock Motor Operator Shunt Trip Terminal Covers Under Voltage Trip

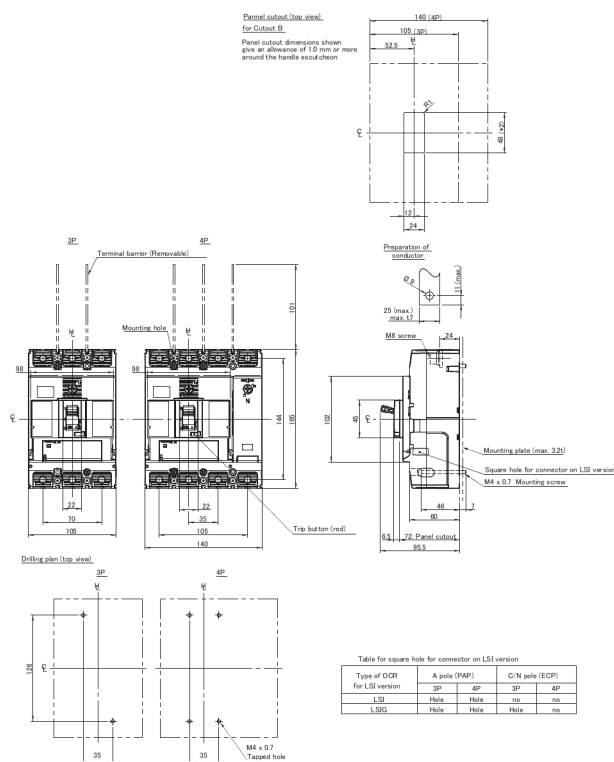
TBP MCCB 250 FRAME 36kA 3P 50A ADJ THERM ADJ MAG

Power Distribution and Protection > Circuit Breakers > Moulded Case Circuit Breakers > TemBreak PRO Moulded Case Circuit Breaker > TemBreak PRO 250 AF > 3 Pole

Vibration Acceleration (Max.)	19 m/s²
Vibration Frequency, Operational (Max.)	16.7 Hz
Vibration Duration (Max.)	12 min
Certifications	CE DEKRA
Shipping Approvals	Contact NHP

REFERENCES

IECEX Certificate	-
Supplier Declaration of Conformity:	-
Installation Guide:	-
User Manual:	-
Manufacturer Datasheet:	-
Manufacturer Catalogue & Product Selection:	-



Dimension Diagram