

# Catalogue No: P160D24160NN

## TBP MCCB 160 FRAME 30PP 4P 160A NON AUTO SWITCH

Power Distribution and Protection > Circuit Breakers > Moulded Case Circuit Breakers > TemBreak PRO Moulded Case Circuit Breaker > TemBreak PRO 160 AF > 4 Pole



- General purpose power distribution, motor starting as well as energy metering and communications
- Current limiting device, reduces fault let through energy for increased installation safety
- Direct opening and indication of main contact status – maximising machine and user safety
- Complies to AS / NZS 60947-2, IEC 60947-2 and CE Panel mount standard, with other mounting options
- 1, 2, 3 or 4 pole versions
- Suits XAP chassis, with panelboard options
- Fault ratings: 25, 36, 50, 70, 125 or 200 kA
- Trip unit options include thermal magnetic or electronic types

Representative Photo Only  
(actual product may vary based on configuration selections)

### SPECIFICATIONS

Switching Poles	3P + N
Component Type MCCB	MCCB AC
Model	P
Frame Size	160 AF size
Rated Frequency	50 / 60 Hz
Connection Mode	Cable Tunnel Clamp (Option) DIN rail adaptor (Option) Extension Bar (Option) Front Connection Rear Connection (Option)
Suitable for Distribution Switchboard or MCC	Yes
Trip Unit Rating	160 A
Trip Unit Protection Type	Non-auto Switch Disconnecter
Uimp, Impulse Withstand Voltage	8 kV
Ui, Rated Insulation Voltage	800 V (rms)
In, Rated Current at 30°C	160 A @30°C
In, Rated Current at 35°C	160 A @35°C
In, Rated Current at 40°C	160 A @40°C
In, Rated Current at 45°C	160 A @45°C
In, Rated Current at 50°C	160 A @50°C
In, Rated Current at 55°C	156 A @55°C
In, Rated Current at 60°C	151 A @60°C
In, Rated Current at 65°C	146 A @65°C
In, Rated Current at 70°C	141 A @70°C
Power Loss	27 W
AC Power loss per pole at full rated current	9 W
Number of Poles	4
Depth (toggle included)	95.5 mm
Height	130 mm

# Catalogue No: **P160D24160NN**

## TBP MCCB 160 FRAME 30PP 4P 160A NON AUTO SWITCH

Power Distribution and Protection > Circuit Breakers > Moulded Case Circuit Breakers > TemBreak PRO Moulded Case Circuit Breaker > TemBreak PRO 160 AF > 4 Pole



Width	120 mm
Pole Width	30 mm
Weight	1.3 kg
Dielectric Strength	2500 V AC
Electrical Life	30000 cycles
Mechanical Life	50000 cycles
Altitude, Operating (No Derating)	2000 m
Cable Cross Section (Min)	1.5 mm <sup>2</sup>
Cable Cross Section (Max)	70 mm <sup>2</sup>
Terminal Type	Screw Terminal(s)
Tightening Torque, Min	4.9 Nm
Tightening Torque, Max	6.9 Nm
Pollution Degree	3
DIN rail mounting with optional adapter	Yes
Suitable for Panel Mounting	Yes
Suitable for Mounting on Chassis	XEP Chassis
Withdrawable	No
Standards Compliance	AS/NZS 60947-3 IEC 60947-3
Rated temperature of trip unit	50 °C
Storage Temperature, Min	-10 °C min
Storage Temperature, Max	70 °C max
Operating Temperature, Min	-5 °C min
Operating Temperature, Max	70 °C max
Relative Humidity, Max	85 %RH
Icw, Rated Short Circuit Withstand Current 400/690V	2 kA / 1.0 Sec kA / Sec
General Accessories	Alarm Switch Auxiliary Switches Handle Operators Interpole Barriers Locking Devices Mechanical Interlock Motor Operator Shunt Trip Terminal Covers Under Voltage Trip
Vibration Acceleration (Max.)	19 m/s <sup>2</sup>
Vibration Frequency, Operational (Max.)	16.7 Hz
Vibration Duration (Max.)	12 min
Certifications	CE DEKRA
Shipping Approvals	Contact NHP

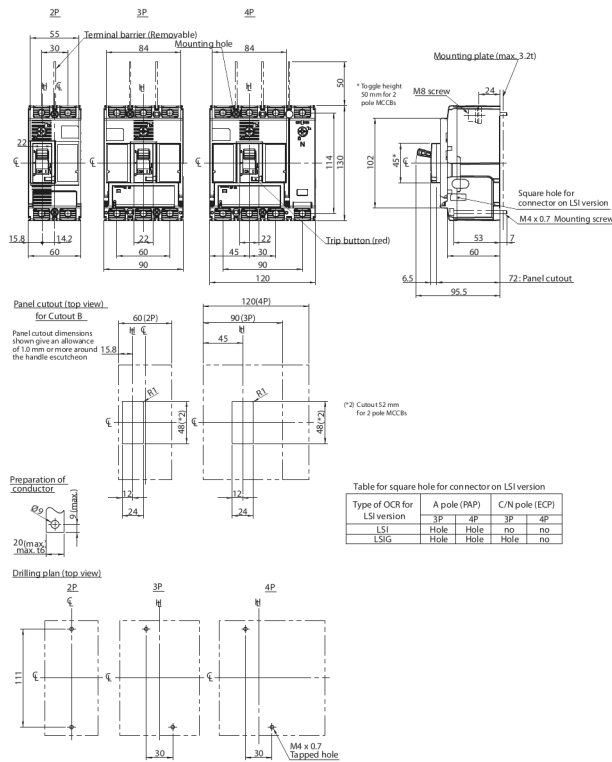
# Catalogue No: P160D24160NN

## TBP MCCB 160 FRAME 30PP 4P 160A NON AUTO SWITCH

Power Distribution and Protection > Circuit Breakers > Moulded Case Circuit Breakers > TemBreak PRO Moulded Case Circuit Breaker > TemBreak PRO 160 AF > 4 Pole



REFERENCES	
IECEX Certificate	-
Supplier Declaration of Conformity:	-
Installation Guide:	-
User Manual:	-
Manufacturer Datasheet:	-
Manufacturer Catalogue & Product Selection:	-



Dimension Diagram