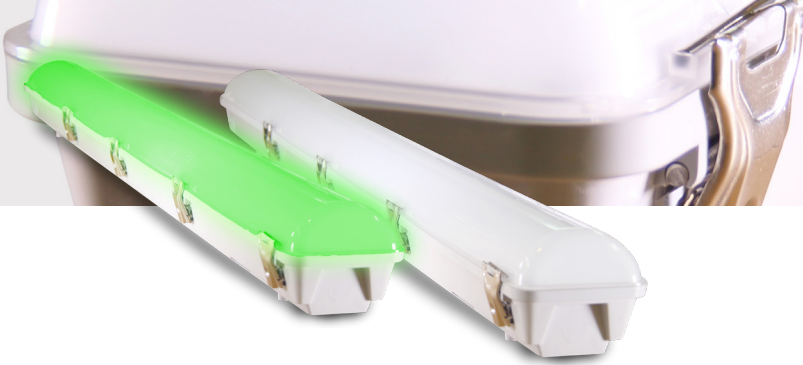


# [ENDURO]

## WEATHERPROOF LED BATTEN



The [ENDURO] is a rugged weatherproof LED batten designed with premium materials to withstand harsh environments while ensuring unparalleled performance. Heavy duty stainless steel retaining clips, a large terminal block and a range of mounting options ensure versatility in both retrofit and new applications.

### Features and Benefits

- High efficiency up to 125lm/W
- Durable polycarbonate body and diffuser with stainless steel clips
- Utilising Tier 1 components for a long service life of  $\geq 50,000$  hours
- Screw point for optional vandalproof installation
- Emergency and sensor options available
- Green (532nm) LED output option available



### Emergency Function

The [ENDURO]<sup>E</sup> automatically switches to its AS2293-tested emergency function when the mains power supply fails. Featuring over 150 minutes of emergency operation supported by high capacity and long lifetime LifePo4 batteries. **Rated C0 = C32, C90 = C32 across all models.**

#### Features:

- 150mins Emergency operation
- Test button for self-test function
- High Capacity
- LifePo4 batteries
- 3 year battery warranty

#### Emergency Specifications

Emergency LED Power	4W
Output current/Voltage	32V – 110mA
Battery charging ambient Temp:	-20°C ~ +60°C
Battery Model:	LifePo4 YH11-403



IP65





### Technical Specifications

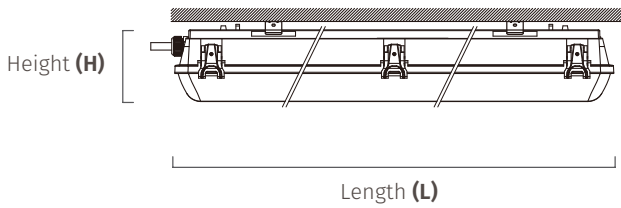
<b>Rated Life</b>	≥50,000 hours	<b>Operating Temperature</b>	-20°C to +45°C (+40°C Em)
<b>Body</b>	Polycarbonate	<b>Input Voltage</b>	200 – 264 VAC ~ 50/60Hz
<b>Installation</b>	Surface Mount, Suspension	<b>IP Rating</b>	IP65
<b>Beam Angle</b>	120°	<b>Connection</b>	Terminal block
<b>Power Factor</b>	>0.95	<b>Net Weight</b>	(600mm) 1.1kg (1.3kg Em)
<b>CRI</b>	>83		(1600mm) 1.9kg (2.2kg Em)

### Sensor Settings

<b>Frequency</b>	5.8GHz ±75 MHz
<b>Detection Zone Max (DxH)</b>	16m x 15m
<b>Detection Sensitivity</b>	10%/ 50%/ 75%/ <b>100%</b>
<b>Hold Time</b>	5s/ 30s/ 90s/ 3min/ <b>20min</b> / 30min
<b>Daylight Sensor</b>	2 lux/ 5 lux/ 10 lux/ 25 lux/ 50 lux/ <b>Disable</b>
<b>Stand-by Period</b>	0s/ 5s/ 10min/ 30min/ 1h/ <b>+ ∞</b>
<b>Stand-by Dimming</b>	10%/ 20%/ <b>30%</b> / 50%

Note: Default factory settings are in bold.

### Dimensional Drawing



Wattage	L	H	W
20W	600	108	120
36W	1160	108	120

Unit = mm

### Specifications

Part Number	Power	CCT	Lumen Output	Beam Angle	CRI
BE-2-20C120	20W	4000K	2500lm	120°	>83
BE-2-20D120	20W	5700K	2600lm	120°	>83
BE-4-36C120	36W	4000K	4400lm	120°	>83
BE-4-36D120	36W	5700K	4400lm	120°	>83

Green (532nm) LED Chip version available by special order  
 Sensor option available, add '-S' to model code.  
 Emergency option available, add '-E' to model code.  
 Dimmable option available, add '-D' to model code.  
 GRP option available, add '-P' to model code  
 eg. BE-4-36D120-EPSS (Emergency, GRP, Sensor, Dimmable)