

SAFE-T-RIP®

CE Conformity

Conveyor Belt Tear Detector



Illustration only, actual product may differ.

The **SAFE-T-RIP** heavy duty Belt Rip Detector is magnetically or mechanically operated, utilising the inherent reliability of Reed Switches or Micro Switches. The Reed Switches are encapsulated in a robust, non metallic enclosure.

Various trip tensions can be achieved by simple external adjustment.

An external santoprene rubber boot assists in excluding dust and dirt from the plug and magnetic socket assembly.

FEATURES

- UV stable, flame retardant (V0 rated) PBT/PC non corrosive enclosure to IP67.
- All external fixings etc. are 316 Stainless Steel.
- Dust boot on socket assembly.
- Socket can be mounted on either side, top or rear of enclosure. (as per Cat No.)
- Two x 20mm stainless steel armoured cable glands available.
- Two 20mm conduit entries.
- Label attachment lug on lid.
- Switches pre-wired to terminals.

CONVEYOR BELT TEAR DETECTOR

TECHNICAL SPECIFICATIONS

STR-1 Electrical Characteristics

Contact Form		A
Contact Material		Ru
Contact rating max	W / VA	10
Switching voltage max	VDC	200
	VAC	140
Switching current max	A	1
Carrying current max	A	1.2
Breakdown voltage min	VDC	240
Contact resistance max (Initial)	mΩ	100
Insulation resistance min	Ω	10 ¹⁰

Environmental Characteristics

Operating temperature	°C	-60 to +155
Vibration (50-2000 Hz)	g	20
Shock (1/2 sin 11 ms)	g	100

STR-2 and STR-3 Electrical Characteristics

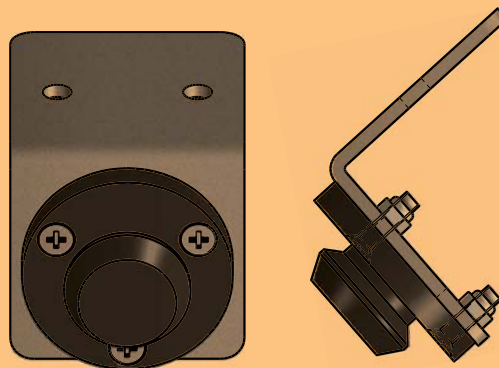
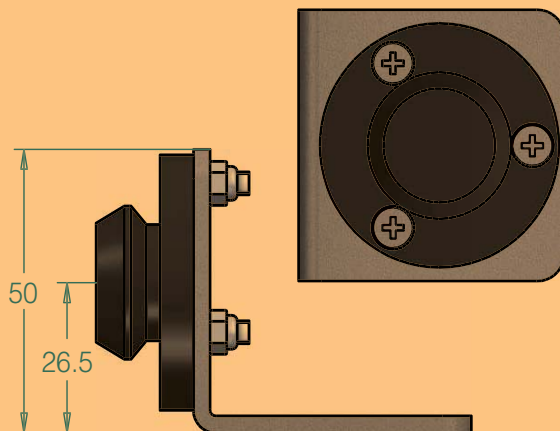
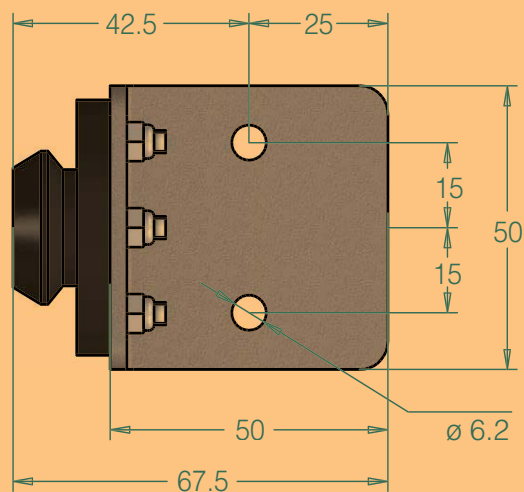
Contact Form		C
Contact Material		Rh
Contact rating max	W / VA	5
Switching voltage max	VDC	175
	VAC	120
Switching current max	A	0.25
Carrying current max	A	1.5
Breakdown voltage min	VDC	200
Contact resistance max (Initial)	mΩ	100
Insulation resistance min	Ω	10 ¹⁰

Environmental Characteristics

Operating temperature	°C	-40 to +125
Vibration (50-2000 Hz)	g	30
Shock (1/2 sin 11 ms)	g	50

Safety Micro Switch with Direct Opening Action Specifications

IEC 60947-5-1 Annex K classification	<input type="checkbox"/> Type 1	<input checked="" type="checkbox"/> Type 2 Direct Opening
Change-over contact element	<input checked="" type="checkbox"/> C	<input type="checkbox"/> Za <input type="checkbox"/> Zb
Contact material	Ag-Ni	
Utilization category	AC-15	DC-13
Operational voltage	230 V	60 V DC
Operational current	1.5 A	0.5 Amp DC
Frequency	50/60 Hz	—
Number of electrical cycles	6050 (6 min-1)	
Number of mechanical cycles	6050 (6 min-1)	
Conventional free air thermal current	10 A	
Conventional enclosed thermal current	—	
Service Temperature	-30° C No Icing	+80° C



Part No. STR-SOC-SS-SP

IMPORTANT NOTICE:

IEC 60947-5-1 2016

AS 60947-5-1 2015

Clause K.7.1.4.6.1

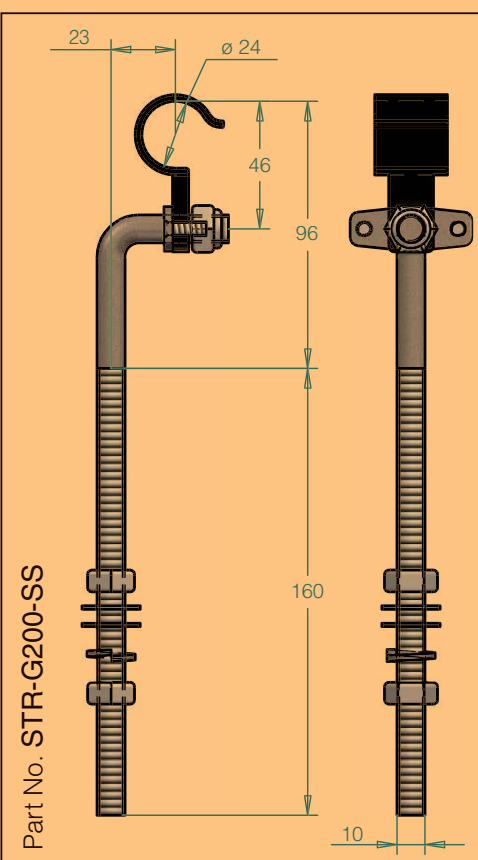
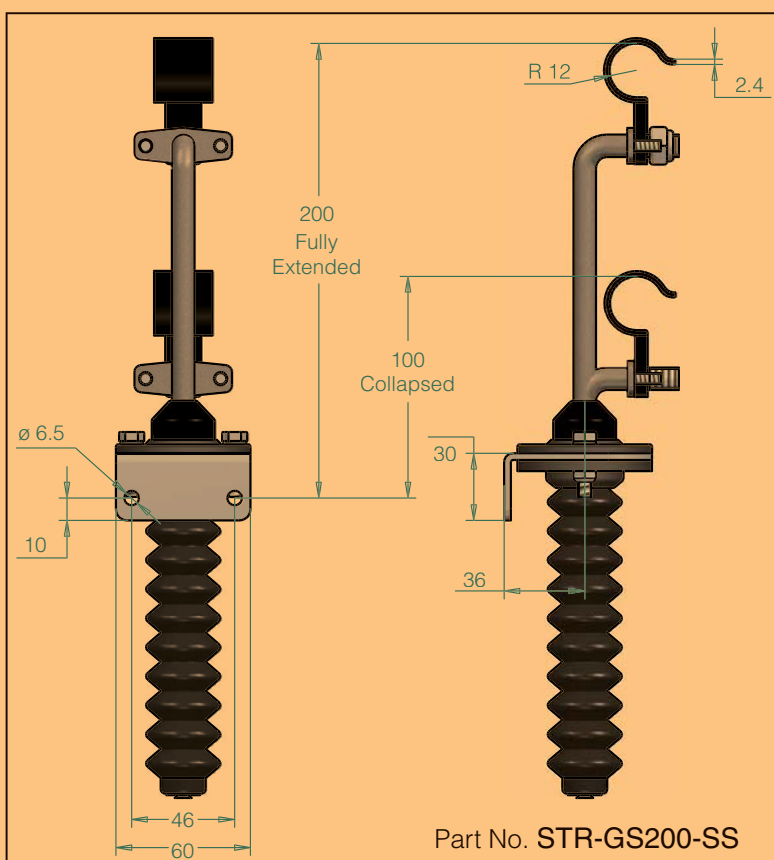
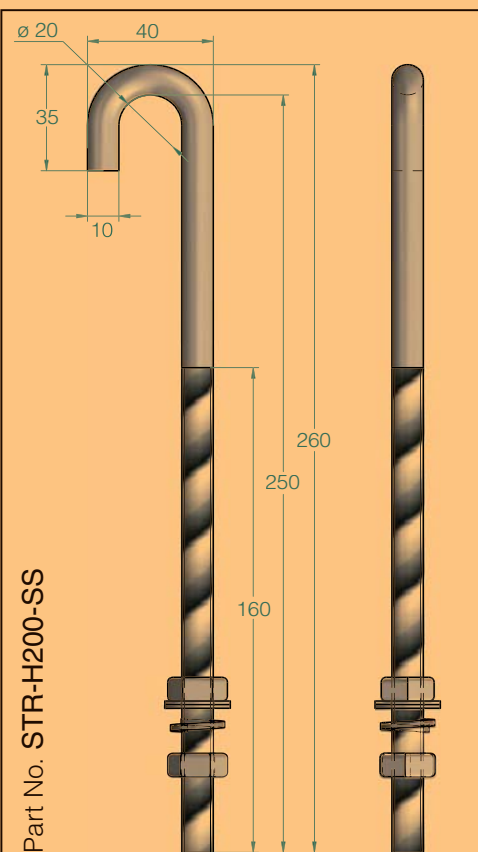
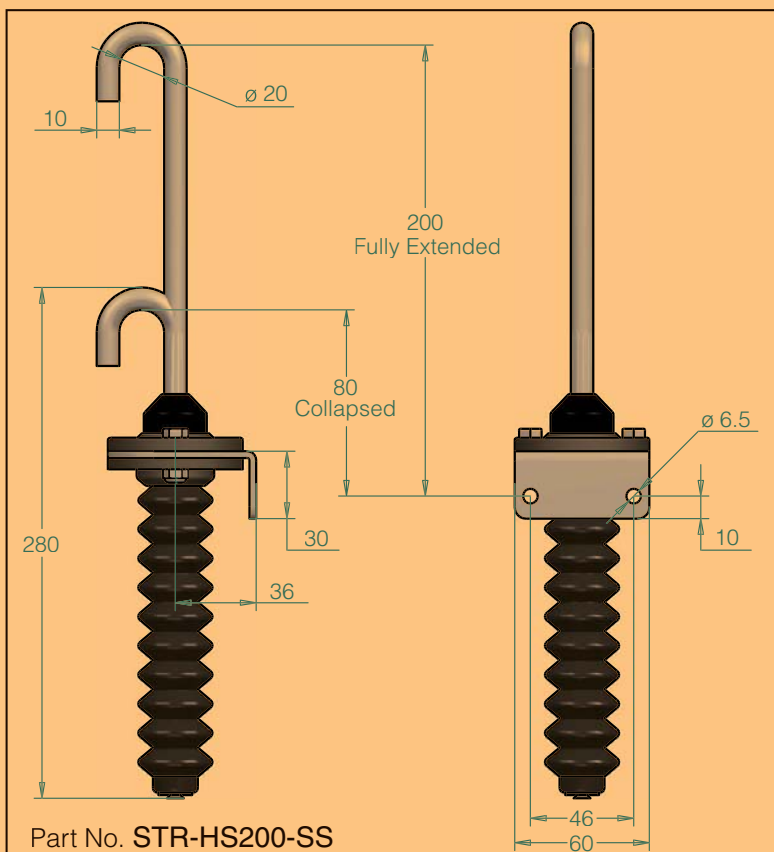
Form C or Form Za

Form C or Form Za change over contact elements.

Only one contact element (Make or Break) in each switch shall be used.

Specifications (short-circuit with standability)

Rated conditional short-circuit current	3 00 A	1 000 A
Short circuit protective device	Fuse 6 A gG (IEC 60269-2)	Fuse 6 A gR (IEC 60269-4)



Manufactured in
Australia by:

18 Tambrey Way, Malaga
Western Australia 6090

Telephone: (08) 9247 6700

Facsimile: (08) 9248 6292

**Electric
Control**
PRODUCTS

www.safe-t-products.com.au

Sold by:

PUB No. STR DEL: CB003 11/19

CONVEYOR BELT TEAR DETECTOR