



NEON TOP-BEND 24V SINGLE COLOUR IP66, FLN2410 - 10W/M

Run length 10 metre, flexible Neon TOP Bend strip, 24V, IP66

Application

A very flexible solution for residential and commercial interior spaces

Design Specifications

- High efficiency SMD LED chips, luminous efficacy up to 600lm/M, beam distribution 115 degree.
- Maximum run length per driver 10m, cuttable every 50 mm at scissors symbol
- Single bin with smooth colour uniformity
- CCT 3000K, CRI >80
- Driver ordered separately, power 10 W/m, 24V DC, cut to length by special order
- Termination accessories connectors are available, contact SAL customer service for order details

Performance

Dimmable - **OPTIONAL**

Dimmer Type - **refer driver specification**



FLN1312MC
mounting
clips (3
pieces incl)



FLN1312EC
end caps (3
pairs)



Technical Specification

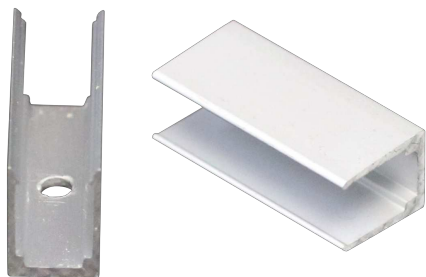
Model No.	Input Voltage (V/DC)	Watts per metre (W/m)	Beam Angle (°)	CRI	Luminous Flux Per Meter (lm/m)	LEDs Per Metre
FLN2410WW1312T	24	9.6	115	80	600	120

Model No.	Dim (mm)	Colour Temp. (K)
FLN2410WW1312T	13(W) x 12(H)	3000

Due to continued product and technology enhancements, data sourced from sal.net.au shall not form part of any contract and or technical performance guarantee unless expressly confirmed in writing by SAL at the time of order. Products are sold in accordance with [SAL Terms and Conditions of sale](#) and all images shown are for illustration purposes only and may vary from the actual colour or finish. Unless specifically stated, all IP ratings nominated for Interior products are from "below the ceiling".

Dimensions

FLN1312MC mounting clips (3 pieces incl)



FLN1312EC end caps (3 pairs)



TO TURN YOUR HOME INTO A **PIXIE SMART** HOME, SELECT A **PIXIE CERTIFIED** INSTALLER.



SIMPLE!

For more
information
please
scan me

