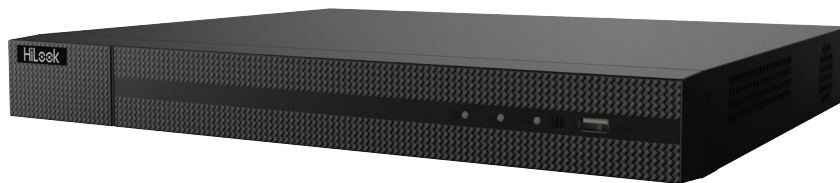




# HILOOK 16CH POE NVR WITH 4TB HDD

HLNVR-216MH-C16P



## FEATURES AND FUNCTIONS

### HD Input

- H.265+/H.265/H.264/H.264+ video formats
- Connectable to the third-party network cameras
- Up to 16 IP cameras can be connected
- Recording at up to 8 MP resolution
- Supports live view, storage, and playback of the connected camera at up to 8 MP resolution

### HD Output

- HDMI and VGA independent outputs
- HDMI Video output at up to 4K (3840 × 2160) resolution

### HD Storage

- 2 SATA interfaces connectable for recording and backup
- H.265+ compression effectively reduces the storage space and costs by up to 75%

### HD Transmission

- 1 self-adaptive 10/100/1000 Mbps network interface
- 16 independent PoE network interfaces are provided

### Various Applications

- Centralized management of IP cameras, including configuration, information import/export, real-time information display, two-way audio, upgrade, etc.
- Connectable to smart IP cameras from Hikvision and the recording, playing back, and backing up of VCA alarms can be realized
- VCA detection alarm is supported
- Instant playback for assigned channel during multi-channel display mode
- Smart search for the selected area in the video; and smart playback to improve the playback efficiency
- Hik-Connect for easy network management



FIRE • SECURITY • INTERCOMS

17 Millicent Street, Burwood, VIC 3125 Australia

Tel: 1300 PSA PRODUCTS (1300 772 776)

Fax: (03) 9888 9993

enquiry@psaproducts.com.au psaproducts.com.au





## SPECIFICATIONS

Model

HLNVR-216MH-C16P

		16-ch
Video/Audio input	IP video input	Up to 8 MP resolution
	Two-way audio	1-ch, RCA (2.0 Vp-p, 1 k Ω)
Network	Incoming bandwidth	160 Mbps
	Outgoing bandwidth	80 Mbps
Video/Audio output	Recording resolution	8 MP/6 MP/5 MP/4 MP/3 MP/1080p/UXGA /720p/VGA/4CIF/DCIF/ 2CIF/ CIF/QCIF
	HDMI output resolution	1-ch, 4K (3840 × 2160)/30Hz, 1920 × 1080p/60Hz, 1600 × 1200/60Hz, 1280 × 1024/60Hz, 1280 × 720/60Hz, 1024 × 768/60Hz
	VGA output resolution	1-ch, 1920 × 1080p/60Hz, 1280 × 1024/60Hz, 1280 × 720/60Hz, 1024 × 768/60Hz
	Audio output	1-ch, RCA (Linear, 1 KΩ)
Decoding	Decoding format	H.265/H.265+/H.264/H.264+/MPEG4
	Live view / Playback resolution	8 MP/6 MP/5 MP/4 MP/3 MP/1080p/UXGA /720p/VGA/4CIF/DCIF/ 2CIF/ CIF/QCIF
	Synchronous playback	16-ch
	Capability	1-ch @ 8 MP / 4-ch @ 1080p
Network management	Network protocols	TCP/IP, DHCP, Hik-Connect, DNS, DDNS, NTP, SADP, SMTP, NFS, iSCSI, UPnP™, HTTPS
Hard disk	SATA	2 SATA interfaces
	Capacity	Up to 6TB capacity for each disk
External interface	Network interface	1, RJ-45 10/100/1000 Mbps self-adaptive Ethernet interface
	USB interface	2 × USB 2.0
POE Interface	Interface	16, RJ-45 10/100 Mbps self-adaptive Ethernet interface
	Power	≤ 150W
	Standard	IEEE 802.3 af/at



Model

HLNVR-216MH-C16P

General	Power supply	100 to 240 VAC
	Power	≤ 280W
	Consumption (without hard disk)	≤ 15W
	Working temperature	-10 to +55° C (+14 to +131° F)
	Working humidity	10 to 90 %
	Chassis	1U chassis
	Dimensions (W × D × H)	385 × 315 × 52 mm (15.2" × 12.4" × 2.0")
	Weight(without hard disk)	≤ 3 kg (6.6 lb)

**PHYSICAL INTERFACES**

INDEX	DESCRIPTION
1	Power Supply
2	Audio In
3	HDMI Interface
4	LAN Network Interface
5	Audio Out

INDEX	DESCRIPTION
6	VGA Interface
7	USB Interface
8	Ground
9	Power Switch
10	Network Interfaces with PoE function (16 interfaces for NVR-216MH-C/16P)

