



CorePro LEDtube EM/ Mains T8

CorePro LEDtube 1200mm 17.6W 865 T8 AU

The CorePro LEDtube is an affordable LED solution suitable for replacing T8 fluorescent lamps. The product provides a natural lighting effect for use in general lighting applications, as well as instant energy savings – an environmentally friendly solution.

Warnings and Safety

• -

Product data

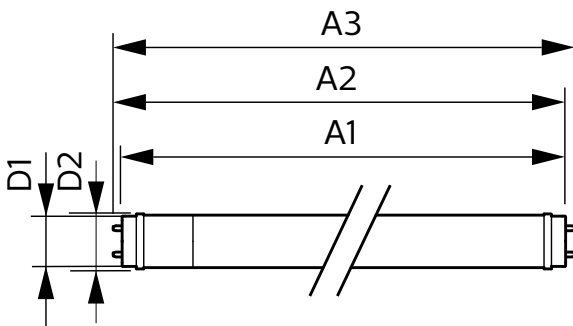
General Information		Operating and Electrical	
Cap-Base	G13 [Medium Bi-Pin Fluorescent]	Line Frequency	50 to 60 Hz
Nominal lifetime	30,000 h	Input Frequency	50 to 60 Hz
Switching Cycle	200,000	Power Consumption	17.6 W
Lighting Technology	LED	Starting Time (Nom)	0.5 s
		Warm-up time to 60% light	0.5 s
		Power Factor (Fraction)	0.9
		Voltage (Nom)	220-240 V
Light Technical		Temperature	
Color Code	865 [CCT of 6500K]	Ambient temperature range	-20 °C to 45 °C
Beam Angle (Nom)	240 degree(s)	T-Case Maximum (Nom)	50 °C
Luminous Flux	1,800 lumen		
Color Designation	Cool Daylight	Controls and Dimming	
Correlated Color Temperature (Nom)	6500 K	Dimmable	No
Luminous Efficacy (rated) (Nom)	102.00 lm/W		
Color Consistency	<6	Mechanical and Housing	
Color rendering index (CRI)	80	Bulb Finish	Frosted
LLMF At End Of Nominal Lifetime (Nom)	70 %		

CorePro LEDtube EM/Mains T8

Bulb Material	Glass
Product Length	1,200 mm
Bulb Shape	Tube, double-ended
Approval and Application	
Energy Saving Product	Yes
Approval Marks	RoHS compliance KEMA Keur certificate
EU RoHS compliant	Yes
Product Data	
Full product code	871951444721900

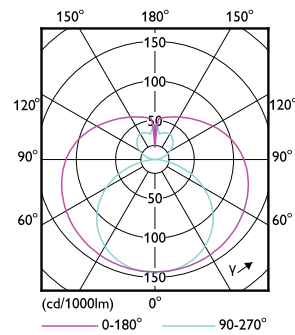
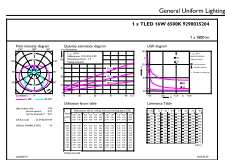
Order product name	CorePro LEDtube 1200mm 17.6W 865 T8 AU
Order code	929003520419
Local order code	LEDCP120017W865
Numerator - Quantity Per Pack	1
Numerator - Packs per outer box	10
Material number (12NC)	929003520419
Full product name	CorePro LEDtube 1200mm 17.6W 865 T8 AU
EAN/UPC - Case	8719514447226
Local code description	LEDCP120017W865

Dimensional drawing



Product	D1	D2	A1	A2	A3
CorePro LEDtube 1200mm 17.6W 865 T8 AU	25.7 mm	28 mm	1,198 mm	1,205 mm	1,212 mm

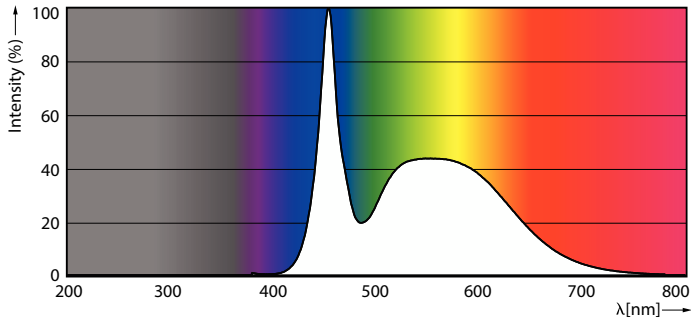
Photometric data



Light Distribution Diagram - CorePro LEDtube 1200mm 17.6W 865 T8 AU

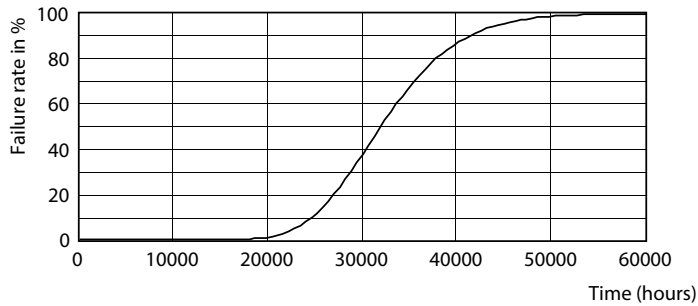
CorePro LEDtube EM/Mains T8

Photometric data

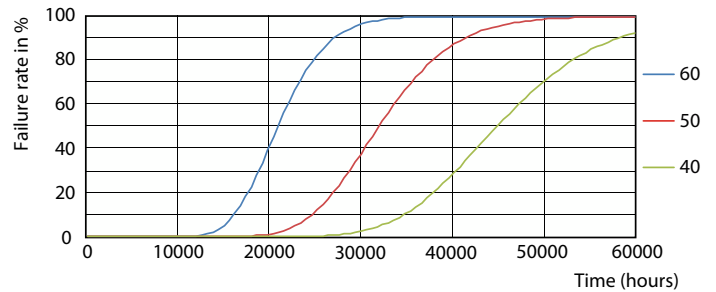


Spectral Power Distribution Colour - CorePro LEDtube 1200mm 17.6W 865 T8 AU

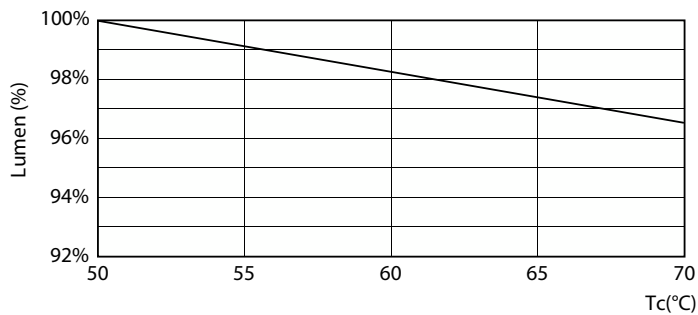
Lifetime



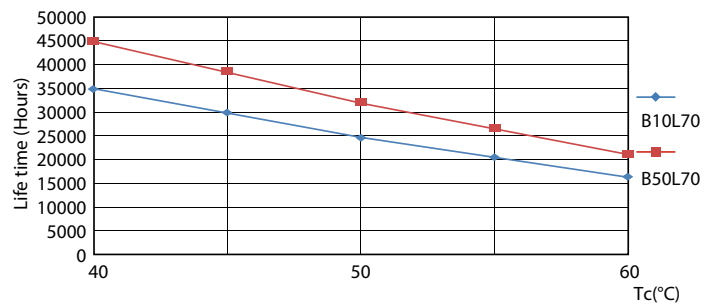
Life Expectancy Diagram - CorePro LEDtube 1200mm 17.6W 865 T8 AU



Life Expectancy Diagram - CorePro LEDtube 1200mm 17.6W 865 T8 AU



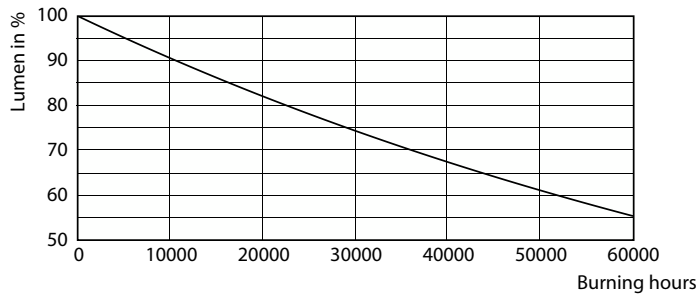
Lumen Maintenance Diagram - CorePro LEDtube 1200mm 17.6W 865 T8 AU



Life Expectancy Diagram - CorePro LEDtube 1200mm 17.6W 865 T8 AU

CorePro LEDtube EM/Mains T8

Lifetime



Lumen Maintenance Diagram - CorePro LEDtube 1200mm 17.6W 865 T8 AU

