



Essential SmartBright G2 LED Downlight DN029B

DN029B G2 LED8/CCT PSR-E D90 CAU

The Philips SmartBright G2 LED downlight provides a professional and flexible solution for a wide variety of applications. Offering three selectable colour temperatures plus integrated dimming capability, the G2 downlight makes it really easy to create the perfect ambience for your unique environment. This affordable and quick to install fitting delivers high energy savings without compromising on light quality.

Product data

General Information	
Lamp colour code	3000/4000/6500
Light source replaceable	No
Luminaire light beam spread	100°
Connection	Plug-in connector 2-pole
Protection class IEC	Safety class II (II)
Operating and Electrical	
Input Voltage	220 to 240 V V
Input frequency	50 or 60 Hz
Power factor (min.)	0.8

Controls and Dimming	
Dimmable	Yes
Mechanical and Housing	
Housing material	Metal-Plastic
Reflector material	Polycarbonate
Optic material	Polycarbonate
Fixation material	Stainless steel
Optical cover/lens finish	Frosted
Overall length	114 mm
Overall width	114 mm
Overall height	56 mm
Overall diameter	114 mm
Colour	White

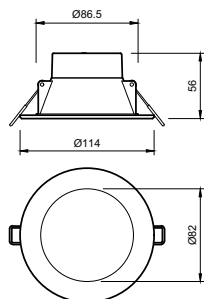
Essential SmartBright G2 LED Downlight DN029B

Dimensions (height x width x depth)	56 x 114 x 114 mm (2.2 x 4.5 x 4.5 in)
Approval and Application	
Ingress protection code	IP40/IP54 front
Mech. impact protection code	IK03 [0.3 J]
Initial Performance (IEC Compliant)	
Initial luminous flux	800 lm
Initial LED luminaire efficacy	106.00 lm/W
Lamp colour temperature	3000 4000 6500 K
Colour Rendering Index	80
Initial chromaticity	(3000K@, 0.4400, 0.40304000K@0.37600.36566500K@0.31300.3370) 6
Initial input power	7.5 W
Power consumption tolerance	+/-10%
Over Time Performance (IEC Compliant)	
Median useful life	30000 h
L70B50	

Application Conditions	
Ambient temperature range	-20 to +40 °C
Product Data	
Full product code	871951425177900
Order product name	DN029B G2 LED8/CCT PSR-E D90 CAU
EAN/UPC – product	8719514251779
Order code	929002531219
Local code	DN029BLED8CCT90
Numerator – quantity per pack	1
SAP numerator – packs per outer box	12
Material no. (12 NC)	929002531219
SAP net weight (piece)	0.230 kg



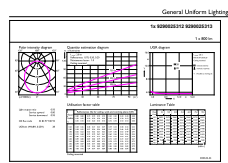
Dimensional drawing



DN029B G2 LED8 3CCT 9W D90 DIM AU

Essential SmartBright G2 LED Downlight DN029B

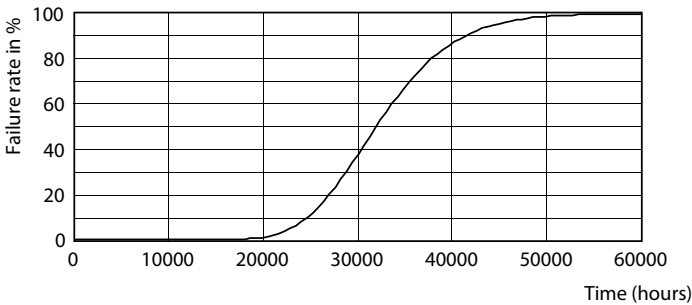
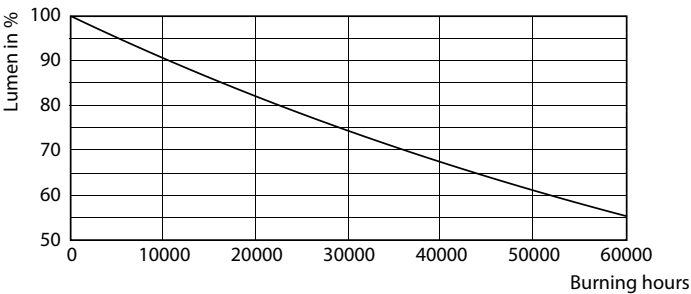
Photometric data



Essential SmartBright G2 LED Downlight DN029B
Page 10

Downlight DN029B G2 LED8 CCT PSR D90

Lifetime



B50L70 30K LMP

B50L70 30K LED

