



Essential SmartBright G2 LED Downlight DN029B

DN029B G2 LED8/NW PSR-E D90 CAU 20-PK

The Philips SmartBright G2 LED downlight provides a professional and flexible solution for a wide variety of applications. Offering three selectable colour temperatures plus integrated dimming capability, the G2 downlight makes it really easy to create the perfect ambience for your unique environment. This affordable and quick to install fitting delivers high energy savings without compromising on light quality.

Product data

General Information		Mechanical and Housing	
Lamp colour code	840 neutral white	Housing material	Plastic
Light source replaceable	No	Reflector material	Polycarbonate
Luminaire light beam spread	100°	Optic material	Polycarbonate
Connection	Plug-in connector 2-pole	Fixation material	Stainless steel
Protection class IEC	Safety class II (II)	Optical cover/lens finish	Frosted
Operating and Electrical		Overall length	90 mm
Input Voltage	220 to 240 V V	Overall width	90 mm
Input frequency	50 or 60 Hz	Overall height	56 mm
Power factor (min.)	0.5	Overall diameter	114 mm
Controls and Dimming		Colour	White
Dimmable	Yes	Dimensions (height x width x depth)	56 x 90 x 90 mm (2.2 x 3.5 x 3.5 in)
Approval and Application		Ingress protection code	IP40/IP54 front

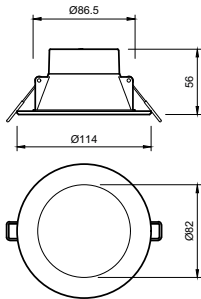
Essential SmartBright G2 LED Downlight DN029B

Mech. impact protection code	IK03 [0.3 J]
Initial Performance (IEC Compliant)	
Initial luminous flux	800 lm
Initial LED luminaire efficacy	106.00 lm/W
Lamp colour temperature	4000 K
Colour Rendering Index	80
Initial chromaticity	(4000K@, 0.3800, 0.3800) 6
Initial input power	7.5 W
Power consumption tolerance	+/-10%
Over Time Performance (IEC Compliant)	
Median useful life L70B50	20000 h
Application Conditions	
Ambient temperature range	-20 to +40 °C

Product Data	
Full product code	871951425194600
Order product name	DN029B G2 LED8/NW PSR-E D90 CAU 20-PK
Order code	929002531949
Local code	DN029BL8NW90PK
Numerator – quantity per pack	1
SAP numerator – packs per outer box	1
Material no. (12 NC)	929002531949
SAP net weight (piece)	0.000 kg

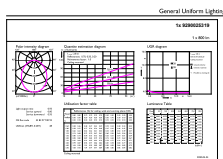


Dimensional drawing



DN029B G2 LED8 840 10W D90 DIM AU

Photometric data

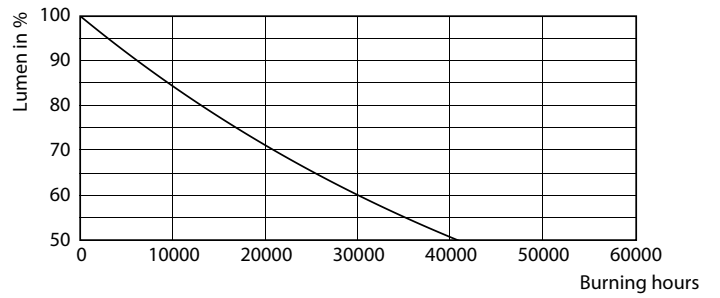
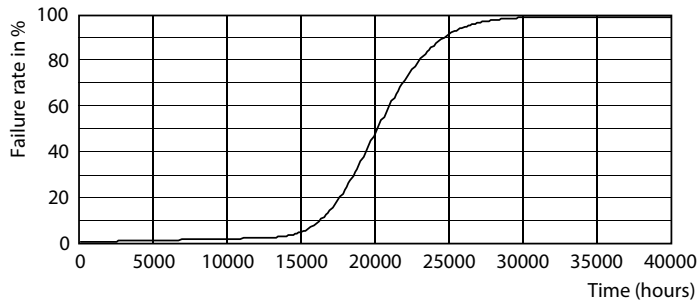


Product Parameters 11 Page Lighting 01 Page 17

Downlight DN029B G2 LED8 NW PSR D90

Essential SmartBright G2 LED Downlight DN029B

Lifetime



B50L70 20K LED

B50L70 20K LMP

