



16

Underground

- Turrets, Panels and Bases
- Turret Security Equipment
- Aluminium Service Blocks
- Wedge Links
- Shrouds
- Cable Glands
- Cable Clamps
- Consumer Connection Pits
- Heavy Duty Pits
- Service Pit and Lid
- Pit Accessories
- Insulation Piercing Connectors
- Pit Connectors
- Marking Tapes
- Cable Support Rollers
- LV Mains to Service Branch Joints
- LV Jointing Tools

Underground Residential Distribution (URD)

URD Turret - Series Eleven

High density injection moulded polyethylene turrets and bases

Easily transported and installed

Strong but light base and turret allow easy transport and installation. Turret is easily and simply secured to base with D-head stainless steel or socket button-head screws.

Maintenance-free design

The all weather polyethylene construction requires no painting or maintenance, as protection against corrosion/moisture is not an issue.

Turret Details

Material:	High impact polyethylene.
Colour:	Green
Venting:	For vented turrets add suffix "V". For example, the catalogue number for 'tall vented' would be UT11GV.
Markings:	Danger Electricity.
IP Rating:	IP44



Turret

Cat No.	Vent	H	W	D
UT11G	N	550	293	225.5
UT11GV	Y	550	293	225.5
UT11SG	N	335	306	238.5
UT11SGV	Y	335	306	238.5

Base

Cat No.	L	Top	Top Depth	Supplied Hardware
UEC11MG	350	550	510	None
UEC11MGE	350	550	510	D-Head DHB10MW22
UEC11MGS	350	550	510	Socket Screw UESM10

URD Series Eleven Panels

These panels fit the tapered slots cast in the UEC Series Eleven bases. Order panels separately. Small panel UEP240 and UEP288 fit the small UT11SG turret. All other panels require the larger UT11G Series turrets.

Materials:

Switch panel type X to AS1795 except panel UEP288 which is injected moulded plastic.

Panel

Cat No.	H	W	Type	Take Offs	Neutral Bar
UEP11T2	515	205	Wedge	1 in 1 out	No
UEP11T2K	510	205	Wedge	3 in 3 out	Yes
UEP11T3A	440	200	Wedge	2 dual in 2 dual out	No
UEP288	205	288	Blank	N/A	N/A
UEP240	240	205	Blank	N/A	N/A
UEP390	390	205	Blank	N/A	N/A
UEP480T	480	205	Blank	N/A	N/A
UEP495	495	205	Blank	N/A	N/A
UEP535	535	205	Blank	N/A	N/A
UEPW495	495	288	Blank	N/A	N/A



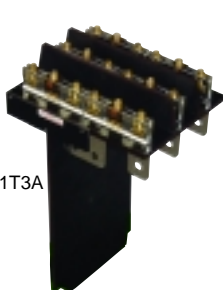
UEP11T2



UEP11T2K



Type UEP



UEP11T3A



UEP288



UEP480T

Underground Residential Distribution (URD)

URD Turret - EV Series

Self extinguishing reinforced fibreglass

The interchangeable turrets, bases and panels provide a combination that can meet wide ranging conditions in the field and provide cost savings in purchasing and inventory.

Turret Details

Turret:	Self extinguishing fibreglass
Venting:	Top vent holes on turret sides with a venting step at the base provides flow through air circulation and minimise condensation.
Door:	Turrets containing RD in the part number have a removable and lockable door
Hardware:	UESM10 socket button screw or DHBM10W22 D-Head bolt
IP Rating:	IP46D

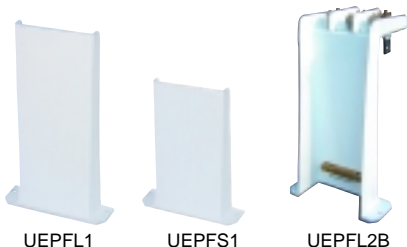
Base Details

Function:	UEC1 base tapered on all sides
	UEC3 base tapered on three sides and flat at the back for mounting close to structures



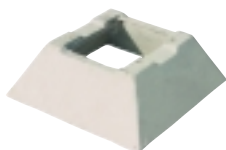
Turret

Cat No.	Material	Colour	H	W	D
UE1SEV	F/G	Beige	470	380	318
UE1EV	F/G	Green	620	375	318
UE1EVGN	F/G	Green	620	375	318



Panel

Cat No.	H	W	Wedge Links
UEPFL1	610	343	-
UEPFL2B	572	346	3
UEPFS1	425	343	-



Base

Cat No.	Material	H	W	D
UEC1	Concrete	230	654	654
UEC3	Concrete	235	640	640

URD Paralleling Pillar and Base

Series URDIC65

The paralleling pillar and base are designed to house a 3-phase switch disconnecter (FSD) for low voltage mains cable interconnecting. Alternatively they are suitable for servicing industrial/commercial customers.

URDIC pillars and bases are interchangeable with fibreglass EV Series cover and corresponding concrete base.

Turret Details

Material: High impact UV resistant polyethylene

Colour: Green.

Venting: Top and bottom vented

Hardware: 4 x DHB10MW22 are provided standard with the base. There is also an Option 2 kit of 4 x UESM10 if requested.



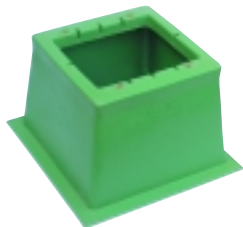
Turret

Cat No.	Material	H	W	D
URDIC65	Polyethylene	645	395	360



Panel

Cat No.	Material	H	W
UEFLL	Gal Steel	569	346



Base

Cat No.	Material	H	W	D
URDIB65	Polyethylene	365	560	560

Underground Residential Distribution (URD)

URD Pillars - the Slimline

The Slimline is designed to house commercial or industrial distribution equipment adjacent to a wall or shopfront.

Turret Details

Material:	Self Extinguishing Fibreglass
Venting:	Top vented
Marking:	Danger Electricity
Hardware:	DHB32 or UES11, order separately
IP Rating:	IP56

Turret

Cat No.	Colour	H	W	D
UETSL1V	Beige	768	572	279



Panel

Cat No.	H	W
UEPFSL1	738	396



Base

Cat No.	Material	H	W	D
UECSL1	Concrete	400	635	311



Industrial / Commercial Pillar

Type UET8

Type UET8 has a designed capacity to accommodate fuses, circuit isolation and other distribution equipment for industrial and commercial systems. Panel material is high grade Switch panel Type X to AS1795, Part 1 supplied either blank or drilled and fitted to customer requirements.

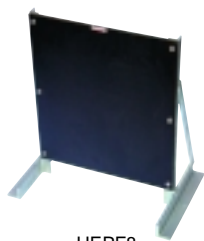
Turret Details

Material:	Self Extinguishing Fibreglass
Colour:	Green
Venting:	Top and bottom vented
Marking:	Danger Electricity
Hardware:	DHB32 or UES11, order separately
IP Rating:	IP44



Turret

Cat No.	Material	H	W	D
UET8O	FG	745	490	380



UEPF8



UEP26215

Panel

Cat No.	Material	H	W
UEP26215	FG	560	425
UEPF8	FG	620	575



Base

Cat No.	Material	H	W	D
UEC8	Concrete	295	740	568

Underground Residential Distribution (URD)

URD Pillars

Type UETSD1C

Supplied as complete pillar assembly. Comprising of turret, panel and base, or just turret and base. Designed for commercial or industrial distribution where quick access is required through a key locked door.

Details

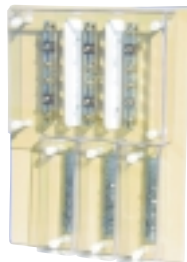
Material:	Self Extinguishing Fibreglass
Colour:	Green or Beige, please confirm at time of order
Venting:	Top vented
Marking:	Danger Electricity
Hardware:	Not applicable
IP Rating:	IP44

Turret and Base assembly

Cat No.	H	W	D
UETSD1NP	1100	740	225

Panel, sold separately

Cat No.	Panel Configuration
UETSD1PG2C	C/W active link and lexan covers
22171K02	Blank



UETSD1PG2C

Complete Pillar

Cat No.	Panel Configuration	H	W	D
UETSD1C	224741K02	1100	740	225
UETSD1AWC	UETSD1PG2C	1100	740	225



UETSD1C



UETSD1AWC

Industrial/Commercial Pillar

Type UET SD2

This pillar design provides easy access to fuses etc. via a hinged lockable door. Standard locking provided is L & F ACR19 camlock. Available on request is Lockwood Type 201 series lock.

Turret Details

Material:	Self Extinguishing Fibreglass
Venting:	Bottom - by clearance with base
Marking:	Danger Electricity
Hardware:	DHB32 or UES11, order separately
IP Rating:	IP44

Turret

Cat No.	Material	Colour	H	W	D
UETSD2	FG	Beige	900	520	400
UETSD2G	FG	Green	900	520	400



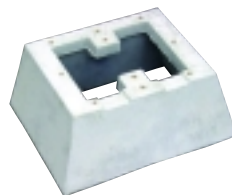
Panel

Cat No.	H	W
UEPFSD2	768	474



Base

Cat No.	Material	H	W	D
UECSD	Concrete	280	534	280



Underground Residential Distribution (URD)**Industrial/Commercial Pillar**

Type UETSD4

This large pillar is designed for sitting close to building alignments, walls, etc. and meets requirements for housing industrial distribution busbar gear. It has a padlockable and removable door to facilitate access.

Details

Material:	Self Extinguishing Fibreglass
Venting:	Top and bottom vented
Colour:	Green
Marking:	Danger Electricity
Hardware:	DHB32 or UES11, order separately
IP Rating:	IP56

Turret

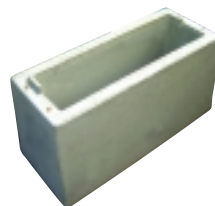
Cat No.	Colour	H	W	D
UETSD4	Green	1280	710	270

**Panel**

Cat No.	Material	H	W
UEPSD4	F/G	820	675

**Base**

Cat No.	Material	H	W	D
UECSD4	Concrete	390	780	330



Industrial/Commercial Pillar

Type UETSD5

This pillar with lockable door, complies with AS3000 requirements of lock being at a minimum height of 1.2m above ground. Door is removable for easy re-entry, inspection and maintenance.

Turret Details

Material:	Self Extinguishing Fibreglass
Venting:	Top and Bottom
Colour:	Beige. For other colours refer Dulmison
Security:	Lockable door
Marking:	Danger Electricity
Hardware:	DHB32 or UES11, order separately
IP Rating:	IP56

Turret

Cat No.	Material	H	W	D
UETSD5	FG	1310	450	320

Panel

Cat No.	H	W
UEPFSD5	1100	375

Base

Cat No.	Material	H	W	D
UECSD5	Concrete	400	620	380



Underground Residential Distribution (URD)

Commercial/Industrial Distribution Pillar

Front and Rear Access Type UETSD6

Supplied as complete pillar assembly, comprising of turret, panel and base or just turret and base. This pillar is designed for front and rear access for simplified equipment installation and servicing. It has low maintenance design and materials. It is UV stabilised for a long service life and light weight to be easily transported and site installed. The design accommodates panels or busbars for strip fuses. The removable base front panel facilitates laying of larger cable sizes and provides easy service access.

Details

Material:	Self Extinguishing Fibreglass
Venting:	Top venting with interior baffles to protect wiring and equipment against unauthorised intrusion of foreign objects.
Panel Mounting:	Two internal moulded fibreglass angles provide for simple attachment of panels or busbars for strip fuses.
Security:	3-point door locking and latching bars. Customers may install lock cylinders to meet own master key system
Marking:	Danger Electricity
Hardware:	DHB32 or UES11, order separately
IP Rating:	IP44

Turret and Base Assembly

Cat No.	Colour	H	W	D
UETSD6	Beige	1630	710	412
UETSD6GN	Green	1630	710	412









Panel, sold separately

Cat No.	H	W	D
UEPSD6	1100	680	10



URD Fast Find Table

					
Turret	Panel	Base	Bolts	Locking	Tool
UT11G UT11GV	UEP11T2 UEP11T2K UEP11T3A UEP390 UEP480T UEP495 UEP535 UEPW495	UEC11MG UEC11MGE UEC11MGS	DHB10MW22 UESM10	LD3M LP3	E18340 E19882
UT11SG UT11SGV	UEP288 UEP240				
UET1SEV	UEPFS1	UEC1 UEC3	DHB10MW22 UESM10	LD1 LP1	E18340 E19882
UETEVE UETEVEGN	UEPFL1 UEPFL2B UEPFL2P				
URDIC65	UEFLL UEPFS1 UEPFL1 UEPFL2B UEPFL2P	URDIB65	DHB10MW22 UESM10	----	E18340 E19882
UETSL1V	UEPFSL1	UECSL1	DHB32 UES11	LD1 LP1	E18340 E19882
UET80	UEP26215 UEPF8	UEC8	DHB32 UES11	----	E18340
UETSD1C UETSD1AWC			N/A	----	
UETSD2 UETSD2G	UEPFSD2	UECSD	DHB32 UES11	----	E18340 E19882
UETSD4	UEPSD4	UECSD4	DHB32 UES11	----	E18340 E19882
UETSD5	UEPSD5	UECSD5	DHB32 UES11	----	E18340 E19882
UETSD6 UETSD6GN	UEPSD6 UETSD6P UETSD6GP	UETSD6 UETSD6GN	DHB32 UES11	----	E18340 E19882

Underground Residential Distribution (URD)

Turret Security Equipment

Turret Hold Down Bolts

Socket Button Head Screws - Stainless steel.

Cat No.	Size
UESM10	M10 x 32mm
UES11	11/4" x 3/8" W



D Head Bolts - Stainless steel

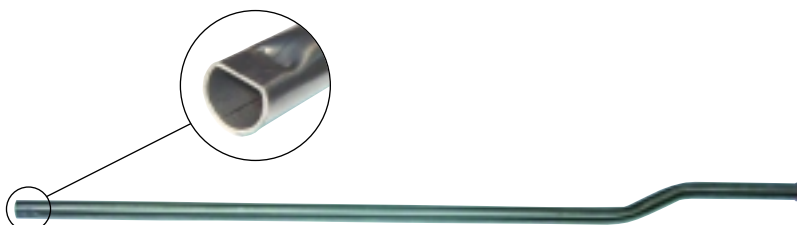
Cat No.	Size
DHB32	11/4" x 3/8" W
DHB38	11/2" x 3/8" W
DHB10MW22	M10 x 30mm



D Head Bolt Spanners

Tube Spanner - Short

Cat No.	Description
E18340	126mm long tool for UET80 turret where design prevents use of T-bar types. Can be used on all DHB bolts on all turrets



S-Bar Spanner - Long

Cat No.	Description
E19882	780mm long tool for all DHB D head bolts

Turret Security Equipment

Locking Devices

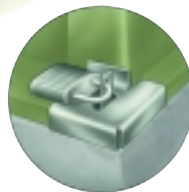
Cat Nos. LD1 and LP1

For turrets types UET EV, UET1 SEV and UET SL1V.
Padlocks not included.



Cat Nos. LD3M and LP3

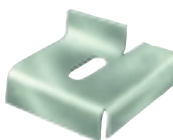
For turrets types UET Series Eleven. Padlocks not included.



Locking devices LD1/LP1 and LD3M/LP3 have similar, but not interchangeable, components. Each have stainless steel bolts with flat extension drilled to accept padlocks and have stainless steel locking plates. These locking devices, in conjunction with their appropriate turret hold down bolts, provide turrets with a high degree of security against unauthorised entry.



Cat. LD3M & LP3



Cat. LD3M



Cat. LP1 & LD1-3



Cat. LP1 & LD1-2



Cat. LP3

Underground Residential Distribution (URD)

Aluminium Service Blocks

Type ASB (Reg. design No. S8326)

Designed for use where two or more lugs are to be bolted together with provision for copper cable tee-off sockets. Made of high conductivity aluminium alloy and fitted with cadmium plated grub screws in tee-off sockets. Tee-off holes are pre-packed with Alminox.

The standard grub screws have a screw driver slot but can be supplied with an Allen Key screw on request. Type ASB1 and ASB2 can be supplied in brass. Consult Dulmison for further details.



Cat No.	Clamping Bolt Size	Length mm	Height mm	Thickness mm	Number & Size of Service Cable Holes
ASB1	1 x M12	40	50	12	2 x 8mm
ASB2	2 x M12	90	50	12	2 x 8mm
ASB3	3 x M12	140	50	12	2 x 8mm

Note: Hardware can be supplied upon request.

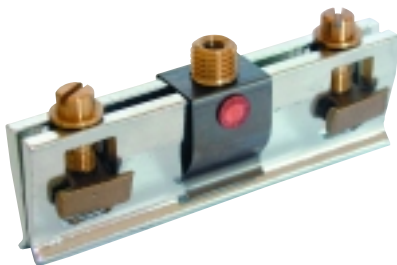
Standard aluminium bolt 40mm x M12 with nut and flat washer. Add -2 to part number eg. ASB1-2

Standard stainless steel bolt 40mm x M12 with nut and spring washer. Add -1 to part number eg. ASB1-1

Wedge Link

Type WL400

Designed for 400 amp. continuous current and for matching link palms spaced at 82.5mm centres.



Wedge Link Operating Handle

Type UELOH1



This is an insulated handle for screwing onto the threaded stud of Type WL400 Wedge Link. Insulated rubber gloves are recommended as an added safeguard. Each handle is electronically tested to 1,000 volts rating prior to supply.

Underground Residential Distribution (URD)**LV Termination Shrouds****Types SHDL; SHDS**

These shrouds slip over the cable terminations to prevent accidental contact with live parts and are held in place with plastic wire ties (not supplied). Their pliability permits elongated distortion to accommodate multi-cable installations.

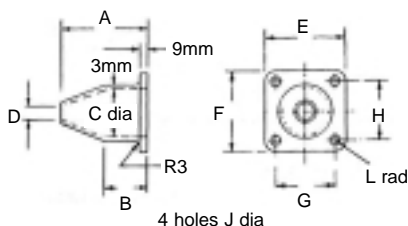
Material: Fire retardant PVC**Colour:** Black

Cat No.	O.D. mm	I.D. mm	L mm
SHDL90	90	84	150
SHDS66	66	62	90

Cable Gland

Type CG (Similar to BS2562)

Type CG Cable Glands are made from high strength copper alloy with a smooth finish for easy wiping. Lower section of gland may be cut to suit larger cables.

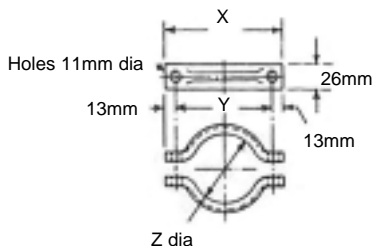


Cat No.	Dia. over metal sheath of cable	Dimensions in mm									
		A	B	C	D	E	F	G	H	J	L
CG2	25 to 83 mm	156.00	92.00	89.00	24.00	124.00	114.30	95.30	85.70	14.00	14.00

Cable Gland Armour Clamps

Type CGAC

Cast in copper alloy and supplied with galvanised steel bolts, nuts and spring washers. Suitable for fixing cable armour to outside of Type CG cable gland.



Cat No.	Matching Cable Gland	Dimensions in mm		
		X	Y	Z
CGAC2	CG2	172.00	146.00	103.00

Underground Residential Distribution (URD)

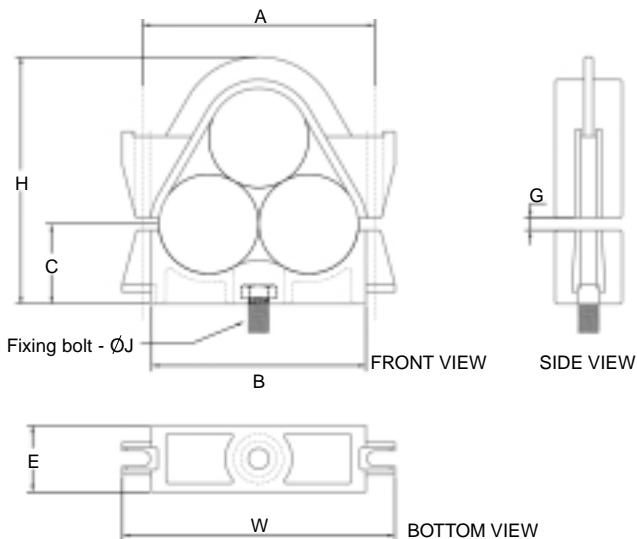
Cable Clamps

Type CAB

Three Way (Trefoil)

2 Bolt Clamps

High strength cast aluminium.
20kN bursting strength.



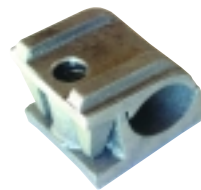
Cat No.	Cable OD mm	Clamp Dimensions in mm								
		A	B	C	E	G	H	J	K Bolt Dia	W
CAB5420	19 - 20	65	73	17.5	37	5	63	-	8	73
CAB5427	25 - 27	65	80	20	38	5	67	-	8	86
CAB5429	27 - 29	70	80	20	38	5	70	-	8	90
CAB5435	33.5 - 35	86	76	30	38	5	89	10	8	104
CAB5437	35 - 37	89	79	32	38	5	95	12	10	111
CAB5440	38 - 40	98	87	35	41	6.5	104	12	10	118
CAB5441	39 - 41	98	87	35	41	6.5	104	12	10	121
CAB5442	40.5 - 42.5	102	94	35	41	6.5	111	12	10	124
CAB5444	42 - 44	104	96	35	41	6.5	104	12	10	126
CAB5446	44.5 - 46.5	108	102	38	45	6.5	111	12	10	128
CAB5448	46 - 48	114	106	39	45	6.5	118	12	10	132
CAB5449	48 - 50	115	108	41	45	6.5	127	12	10	137
CAB5452	50 - 52	120	112	42	45	6.5	130	12	10	142
CAB5454	52 - 54	126	116	42	45	6.5	131	12	10	148
CAB5456	54 - 56	127	120	44	46	6.5	135	12	10	150
CAB5459	56.5 - 59	130	121	45	48	6.5	137	16	10	152
CAB5466	63.5 - 66	151	146	50	48	6.5	165	16	10	178
CAB5472	66 - 72	165	160	52	60	6.5	158	-	12	195
CAB5476	74 - 76	172	170	54	62	6.5	165	-	12	202
CAB5478	76 - 78	192	165	55	60	10	170	-	12	225
CAB5482	80 - 82	196	178	66	64	10	204	16	12	228

Cable Clamps

Type CAB (Cont'd)

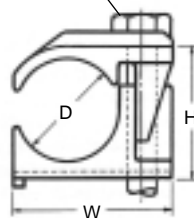
Single Way Single Bolt Clamps

A self aligning, interlocking, non-magnetic clamp. Fits standard channels.



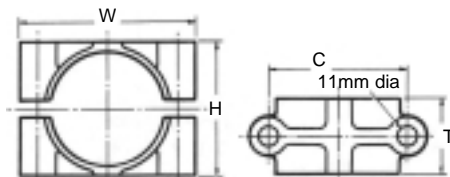
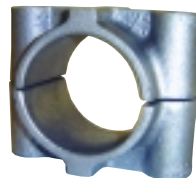
Cat No.	Cable Dia. D mm		Dimensions in mm		
	Min	Max	H	W	Bolt Dia.
CAB5125	19	25	31	41	10
CAB5130	24	30	36	46	10
CAB5135	29	35	41	51	10
CAB5141	34	41	48	58	10
CAB5147	40	47	54	64	10
CAB5154	46	54	61	71	10

(Bolt not supplied)



Single Way 2 Bolt Clamps

For larger diameter cables. Non magnetic. For flat or channel mounting.



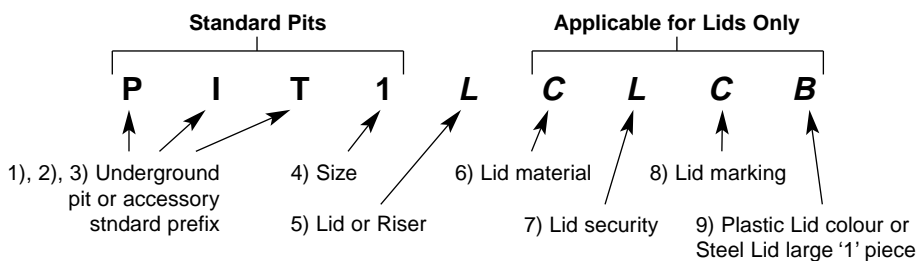
Cat No.	Cable Dia. mm	Dimensions in mm			
		H	C	T	W
CAB5960	55-60	72	73	45	96
CAB5967	60-67	79	80	45	105
CAB5974	67-74	88	89	50	112
CAB5981	74-81	95	96	50	121
CAB59105NI	101-105	124	120	65	154

Underground Residential Distribution (URD)

Consumer Connection Pits

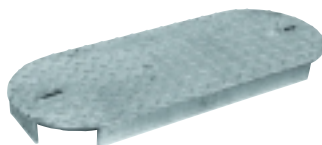
Dulmison consumer connection pits are made of high strength HDPE and polypropylene plastic exhibits excellent weather and chemical stability for long installation life. Design embodies special ribbing for on site strength and stability. Pits are extendable. Pit lids are available in concrete and galvanised steel checkerplate.

Pit Nomenclature



Character Representation

- | | |
|---|--|
| 1) P | |
| 2) I | |
| 3) T | |
| 4) <u>Refer table</u> | |
| 5) <u>Accessory:</u> | L = Lid |
| | R = Riser |
| 6) <u>Lid material:</u> | C = Concrete
P = Plastic
S = Steel |
| 7) <u>Lid security:</u> | L = Lockable
T = Tamper Proof (Standard) |
| 8) <u>Lid marking:</u> | C = Communication
E = Electrical
U = (unmarked) |
| 9) <u>Lid colour:</u>
(for plastic only) | B = Black |
| or | |
| <u>Lid Size:</u>
(for steel only) | 1 = Non-preferred one piece lid for larger size pits |



Applicable for Lid part numbers only



Consumer Connection Pits



Pit Lid	Material (Type)	Overall Dim	Weight (kg)
		Pits - inside dims Lids - Per Pit	
PIT1		419 x 155 x 350	3.00
PIT1LCT(E/C/U)	Concrete	1 lid per pit	8.00
PIT1LST(E/C/U)	Steel	1 lid per pit	4.80

Riser for PIT1 is PIT1, height increase from 100mm to 200mm



Pit Lid	Material (Type)	Overall Dim	Weight (kg)
		Pits - inside dims Lids - Per Pit	
PIT2		553 x 180 x 514	6.00
PIT2LCT(E/C/U)	Concrete	1 lid per pit	16.00
PIT2LST(E/C/U)	Steel	1 lid per pit	7.70

Riser for PIT2 is PIT2, height increase from 100mm to 325mm



Pit Lid	Material (Type)	Overall Dim	Weight (kg)
		Pits - inside dims Lids - Per Pit	
PIT3		663 x 243 x 570	8.20
PIT3LCT(E/C/U)	Concrete	1 lid per pit	25.00
PIT3LST(E/C/U)	Steel	1 lid per pit	13.10

Riser for PIT3 is PIT3, height increase from 100mm to 325mm



Pit Lid	Material (Type)	Overall Dim	Weight (kg)
		Pits - inside dims Lids - Per Pit	
PIT4		584 x 281 x 760	9.50
PIT4LCT(E/C/U)	Concrete	1 lid per pit	27.00
PIT4LST(E/C/U)	Steel	1 lid per pit	14.40

Riser for PIT4 is PIT4, height increase from 100mm to 400mm



Pit Lid	Material (Type)	Overall Dim	Weight (kg)
		Pits - inside dims Lids - Per Pit	
PIT5		580 x 330 x 580	12.00
PIT5S	Split	1 lid per pit	
PIT5LCT(E/C/U)	Concrete	1 lid per pit	30.00
PIT5LCL(E/C)	Concrete	1 lid per pit	30.00
PIT5LST(E/C/U)	Steel	1 lid per pit	16.20
PIT5LSL(C/U)	Steel	1 lid per pit	16.70

Riser for PIT5 is PIT5R , height increase is 200mm to 450mm

Riser for PIT5S is PIT5S, height increase is 150mm to 370mm



Underground Residential Distribution (URD)

Consumer Connection Pits

Pit Lid	Material (Type)	Overall Dim	Weight (kg)
		Pits - inside dims Lids - Per Pit	
PIT6		1240 x 440 x 614	26.00
PIT6LCT(E/C/U)	Concrete	2 lids per pit	38.00
PIT6LCLC	Concrete	1 lid per pit	38.00
PIT6LST(E/C/U)	Steel	2 lids per pit	19.70
PIT6LST(E/C/U)1	Steel	1 lid per pit	38.80
PIT6LSL(C/U)	Steel	2 lids per pit	20.20
PIT6LSL(C/U)1	Steel	1 lid per pit	39.40



Riser for PIT6 is PIT6, height increase 332mm or PIT 8, height increase 440mm

For concrete lids PIT-TBAR is required

Pit Lid	Material (Type)	Overall Dim	Weight (kg)
		Pits - inside dims Lids - Per Pit	
PIT7		910 x 440 x 1075	26.00
PIT7LCT(E/C/U)	Concrete	2 lids per pit	38.00
PIT7LST(E/U)	Steel	2 lids per pit	15.20
PIT7LST(E/C/U)1	Steel	1 lid per pit	28.50
PIT7LSLU	Steel	2 lids per pit	15.80
PIT7LSL(C/U)1	Steel	1 lid per pit	29.10



Riser for PIT7 is PIT7, height increase 370mm

For concrete lids PIT7TBAR is required

Pit Lid	Material (Type)	Overall Dim	Weight (kg)
		Pits - inside dims Lids - Per Pit	
PIT8		1240 x 440 x 834	29.00
PIT6LCT(E/C/U)	Concrete	2 lids per pit	38.00
PIT6LCLC	Concrete	2 lids per pit	38.00
PIT6LST(E/C/U)	Steel	1 lid per pit	19.70
PIT6LST(E/C/U)1	Steel	1 lid per pit	38.80
PIT6LSL(C/U)	Steel	2 lids per pit	20.20
PIT6LSL(C/U)1	Steel	1 lid per pit	39.40



Riser for PIT8 is PIT8, height increase 440mm or PIT 6, height increase 332mm

For concrete lids PIT-TBAR is required



Cat. PIT-TBAR



Cat. PIT7TBAR

Heavy Duty Pits

For larger cable requirements

Series 450

Designed for commercial or domestic applications and trafficable areas, these heavy duty polypropylene pits are strong, durable and easy to install. The Series 450 pits are also available with riser units for 295mm depth increases. Ideal as an electrical or communications cable jointing pit.

Series 600

This large capacity heavy duty polypropylene pit is ideal for trafficable commercial projects. Optional risers are available for 300mm depth increases. Series 600 pits are well suited for large electrical or communication cable jointing where large radii are involved.

Covers: Available to Australian Standard AS3996 Class A (Light Duty) and Class B (Heavy Duty) in concrete or galvanised steel checkerplate.

Installation: When being used in trafficable areas, the Series 450 and Series 600 pits must be installed with a concrete collar to fully support the top of the pit. This collar should be approximately 150 x 150mm around the top perimeter.



Pit Lid	Material (Type)	Overall Dim	Weight (kg)
		Pits - inside dims Lids - Per Pit	
PIT450		450 x 450 x 450	8.00
PIT450LCTU	Concrete Steel	1 lid per pit	13.00
PIT450LSTU		1 lid per pit	
PIT450R	Height increase of 295mm		



PIT600R

Pit Lid	Material (Type)	Overall Dim	Weight (kg)
		Pits - inside dims Lids - Per Pit	
PIT600		600 x 600 x 600	14.30
PIT600LCT(E/C/U)	Concrete Steel	1 lid per pit	60.00
PIT600LSTU		1 lid per pit	19.00
PIT600R	Height increase of 300mm		



PIT600

Underground Residential Distribution (URD)

Service Pit and Lid

Designed with wide side wall ribbing for high strength, the Dulmison service pit is made from linear, medium density polyethylene and exhibits excellent weather and chemical stability. Pit lids are available in concrete or glass filled nylon.



Pit Lid	Material (Type)	Overall Dim	Weight (kg)
		Pits - inside dims Lids - Per Pit	
PIT300D		320 x 530	4.50
PIT300DLCT(E/C/U)	Concrete	390 Dia	18.6
PIT300DLPT(E/C/U)*	Plastic	390 Dia	1.5

Plastic Pit Lid Features

- Tamper proof - latched
- Surface is non-slip
- Made from UV resistant material
- 3 tonne load carrying capability
- Lightweight - 1/12 that of concrete equipment
- Able to be retrofitted into existing pits



Pit Accessories

Lid Lifting Hook for concrete pit lids with lifting bore
Cat No. **LIDLIFTERHK**



Lid Lifter for concrete pit lids with elongated hole
Cat No. **LIDLIFTER**



Lid Lifter for plastic pit lids
Cat No. **PLLIFTER**



Insulation Piercing Connectors - Fused Type IPC

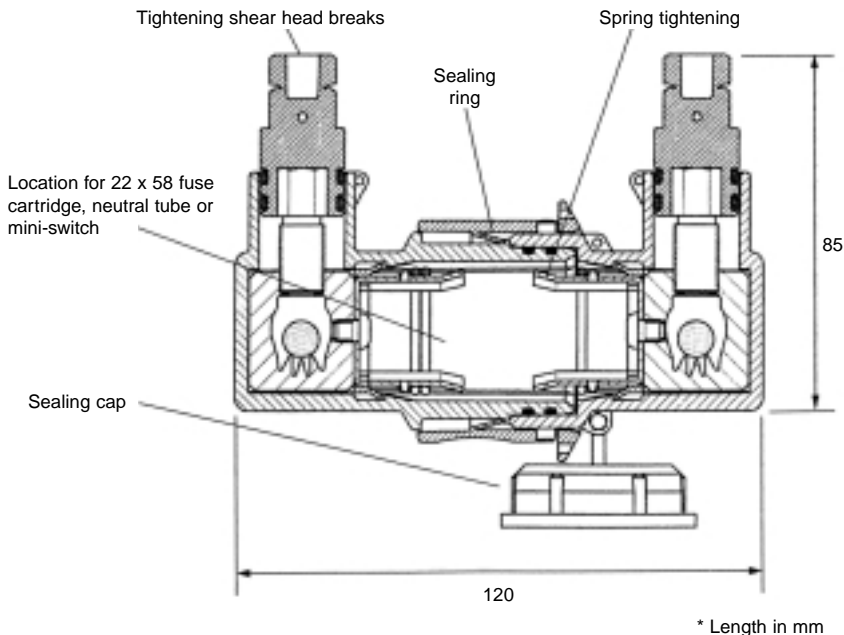
These fully waterproof, insulated connectors are suitable for installation in a pit and enable underground services to be connected quickly and safely by one person using a ratchet spanner.

The connectors have been rigorously tested and avoid the need for stripping, compression tooling or heat shrinking.



K199

- Terminals incorporate insulation piercing technology
- Simple, quick, fail safe three step installation
- Terminals accept a wide range of cables from 6-50mm²
- The K199 terminal has 2 cable entry points to suit phase connections and 100AMP fuse capacity with a 22 x 58 barrel type
- The tapered flexible cable seal enables the connector to remain waterproof, even when cables are not in straight alignment with the connector
- Terminals suit XLPE and PVC insulated single core and multi-core cables
- Reusable - up to three times with copper cable
- Connector is able to be separated with the fuse remaining in the dead side
- Plug provided to cap live side after connector is separated



Underground Residential Distribution (URD)

Pit Connectors - GelPort

Submersible Secondary Connectors for URD Distribution

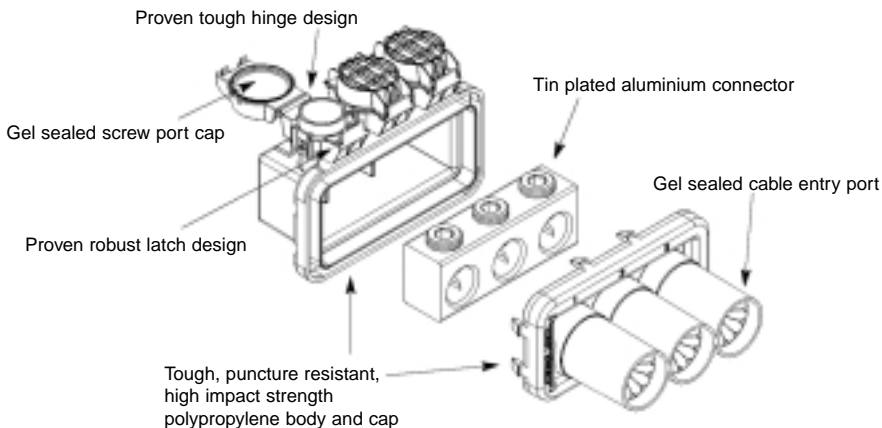
GelPort submersible secondary connectors utilise the sealing properties of PowerGel sealant technology to completely encapsulate and protect cable connections, even under water. Versatile and easy to install, the GelPort connector features no loose parts, no boots to trim, and no maintenance. This innovative product is available in 3, 4, 5, 6, and 8 port configurations, and is suitable for use on 4-150mm cables carrying up to 600V. GelPort secondary connectors dramatically reduce corrosion issues, resulting in longer service life and greater customer satisfaction.



To install GelPorts strip the cable and push it into the gel-filled cable port. The cable is encapsulated in gel and instantly sealed. It's that simple.

**Insulation
piercing version
coming soon!**

Cat No.	Number of Wire Ports	Conductor Use Range mm ²	Length	Width	Height
GPRT-350-3P	3	4-150	117	97	89
GPRT-350-4P	4	4-150	149	97	89
GPRT-350-5P	5	4-150	180	97	89
GPRT-350-6P	6	4-150	212	97	89
GPRT-350-8P	8	4-150	276	97	89



Marking Tapes

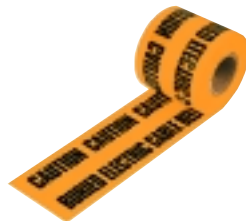
Type ELECTAPE

Protect your underground services with marking tapes from Dulmison. ELECTAPE is 100% Australian made, manufactured and tested to comply with AS2468.1-1995. It is marked CAUTION BURIED ELECTRIC CABLE BELOW and comes in a roll of 350m.

ELECTAPE conforms to all aspects of AS2648.1-1995 for:

- Material
- Width 150mm
- Colour (orange)
- Chemical Resistance
- Elongation
- Tear Resistance
- Impact Resistance
- Marking

Other underground tapes are also available.



Underground Residential Distribution (URD)

Cable Support Rollers

Type CSR

Construction: Tubular galvanised steel frame; aluminium supports roller; stainless steel axle. Tubular frame members prevent unit sinking under load. Unit may be used as corner roller by turning on its side and staking through tubular members for stability. Roller has a 152mm diameter.



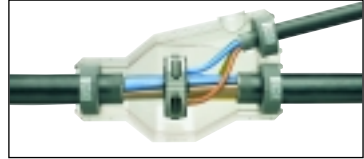
Principle Dimensions mm

Cat No.	Length	Width	Height	Roller
CSR3	381	235	244	152 Dia.

Low Voltage - Mains to Service - Branch Joints

Joints are designed for use with 4 core sector shaped polymeric mains cables, together with 4 or 5 core polymeric Branch cables. Joints are available with one of 2 encapsulation shell types as follows:

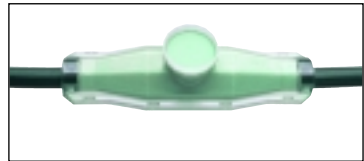
- Impact Resistant Polycarbonate - Type BAV
Supplied as two clip together halves
- Impact Resistant Polypropylene - Type MM
Supplied in Hinged form



All Kits are supplied complete with all necessary jointing materials, including foam seals, fillers, appropriate connectors, safety gloves and instructions.

Two types of filler material are available, and can be supplied in mixing satchels, or in tins. (Satchels being standard) Shelf life of both fillers is 2 years. Full technical details and MSDS data is available for each product.

- GUROFLEX - A Patented, ISOCYANATE free, environmentally friendly, 2 component cold casting compound. It is qualified to CENELEC HD623, and can be used on XLPE, PVC, PE or Paper insulated cables. Colour - Green.
- RAPID 3010 - This is a conventional two part Hydrophobic Polyurethane resin. It is qualified to CENELEC HD623, and can be used on XLPE, PVC or PE insulated cables - Colour - Blue.



Underground Residential Distribution (URD)

Low Voltage - Mains to Service - Branch Joints (Cont'd)

Three types of connectors are available, within each kit. The mains to branch ring style connectors, incorporate insulation piercing technology to make the mains connection. All connectors are range taking. Mantle connectors are of the screw type, and can be supplied with insulating shrouds.

- **HELLSTERN** - Two Piece design - top and bottom
Tightening screws on each side, all mains connections made simultaneously, and all screws tightened from the top of the joint.
- **HINGED** - Ring Design
Is clipped into position over mains cores. Each core Connection can be carried out individually.
- **MANTLE** - Screwed Design
Nickel plated screw connector, available with Insulating Shrouds.



Full Joint Kits

Cat No.	Mains Cable Range - No. of cores - mm ²	Service Cable Range	Resin Type	Connector Type	Connector Cat No.
BAV-2-GD-MC25	5 x 10 - 25	5 x 10 - 25	GUROFLEX	Mantle	GURO-MC25-I
BAV-2-GD-MC25	5 x 10 - 25	5 x 10 - 25	RAPID3010	Mantle	GURO-MC25-I
MM-5-GD-AU01	4 x 120 - 240*	4 x 6 - 70	GUROFLEX	Hinged	JOR05373
MM-5-3C-AU01	4 x 120 - 240*	4 x 6 - 70	RAPID3010	Hinged	JOR05373
MM-5-GD-AU02	4 x 185 - 240*	4 x 6 - 70	GUROFLEX	Hellstern	HEL-6879
MM-5-3C-AU02	4 x 185 - 240*	4 x 6 - 70	RAPID3010	Hellstern	HEL-6879
MM-7-GD-AU01	4 x 240**	4 x 6 - 70	GUROFLEX	Hellstern	HEL-6880
MM-7-3C-AU01	4 x 240**	4 x 6 - 70	RAPID3010	Hellstern	HEL-6880
MM-7-GD-AU02	4 x 185 - 240*	4 x 6 - 70	GUROFLEX	Hellstern	HEL-6879
MM-7-3C-AU02	4 x 185 - 240*	4 x 6 - 70	RAPID3010	Hellstern	HEL-6879

* Can only be used on 240 Solid Sector cable

** Can only be used on 240 Stranded Sector cable

Note: MM-7 has a larger case than the MM-5 for greater clearance.

LV Jointing Tools



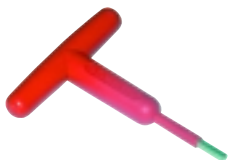
Mains cable over sheath removal tool - Cat No. **UNI25**

- Ratchet Design
- Suitable for cables over 25mm in diameter
- Strips circumferentially as well as longitudinally



Mains cable over sheath removal tool - Cat No. **JOR-20300**

- Fully Insulated Handle - rated at 1000V
- Non flammable thermoplastic material
- Suitable for cables over 20mm in Diameter
- Comes with protective cove for blade



Insulated Hex Drive - Cat No. **#TBOX5MM & #TBOX8MM**

- Fully Insulated and rated handle - 1000V
- 5mm and 8mm Hex sizes



Core separation Tool - Cat No. **IBSW1**

- Unique Hinged design, for controlled separation
- Nylon wedges, eliminates damage to cores.



Core separation Tool - Cat No. **JOR-20400**

- Impact Resistant Thermoplastic
- Can be used on energised 1000 volt cables
- Designed to be driven to separate cores

Notes