

PRODUCT DATASHEET

L 40 W/840 C G10Q

LUMILUX T9 C | Circular fluorescent lamps 29 mm, with G10Q base



AREAS OF APPLICATION

- Public buildings
- Restaurants
- Industry
- Shops
- Supermarkets and department stores
- Hotels

PRODUCT BENEFITS

- Extremely economical
- Good quality of light
- Excellent luminous flux
- Excellent uniform illumination with no shadows

PRODUCT FEATURES

- Good color rendering group: 1B (R_a : 80...89)
- Good average lifetime
- Single-ended round fluorescent lamp
- Dimmable



TECHNICAL DATA

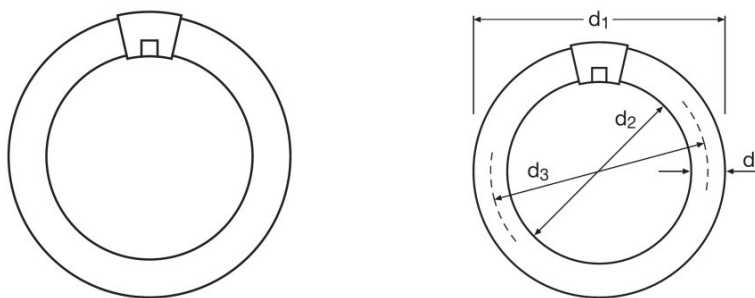
Electrical data

Nominal voltage	115 V
Rated wattage	40.00 W
Nominal wattage	40.00 W

Photometrical data

Color rendering index Ra	80...89
Rated luminous flux	3000 lm
Light color	840
Rated color temperature	4000 K
Nominal luminous flux	3000 lm
Color temperature	4000 K
Luminous flux	3000 lm
Color rendering index Ra	80...89

Dimensions & weight



Length	406.0 mm
Diameter	29.0 mm

Lifespan

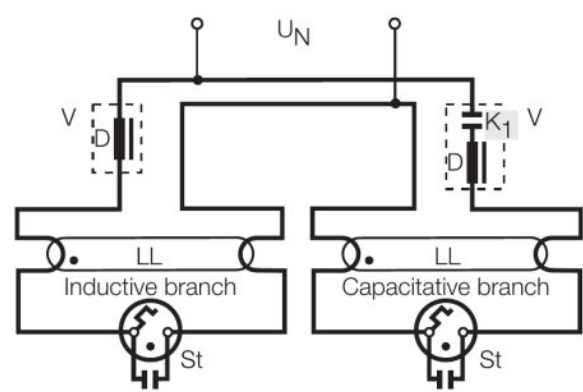
Service life	5000 h
Lifespan	9000 h
Rated lamp life time	10000 h
Nominal lamp life time	10000 h

Additional product data

Base (standard designation)	G10q
Mercury content	3.6 mg

Show WEEE picto	Yes
-----------------	-----

Wiring Diagram



Wiring diagram

EQUIPMENT / ACCESSORIES

- Suitable for operation on electronic and conventional control gears

SAFETY ADVICE

In case of lamp breakage: www.ledvance.com/brokenlamp

LOGISTICAL DATA

Product code	Packaging unit (Pieces/Unit)	Dimensions (length x width x height)	Gross weight	Volume
4008321646149	Sleeves 1	421 mm x 411 mm x 38 mm	451.00 g	6.58 dm ³
4008321646156	Shipping carton box 12	452 mm x 436 mm x 431 mm	5865.00 g	84.94 dm ³

The mentioned product code describes the smallest quantity unit which can be ordered. One shipping unit can contain one or more single products. When placing an order, for the quantity please enter single or multiples of a shipping unit.

DISCLAIMER

Subject to change without notice. Errors and omission excepted. Always make sure to use the most recent release.