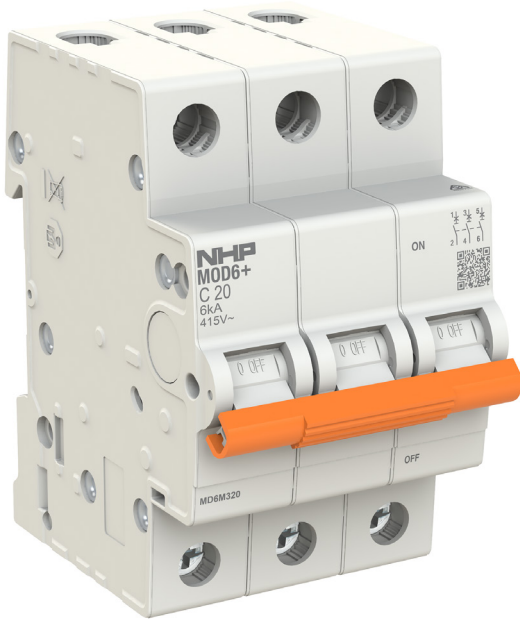


# MD6M363

NHP MOD6+ Miniature Circuit Breaker MCB 6kA 3 Pole 63A C Curve



Component type	Miniature circuit breaker (MCB)
Product status	New Item

## ELECTRICAL

Rated current	63 A
Number of poles (total)	3
Trip curve	C
Rated voltage	415 V
Frequency	50-60 Hz
Voltage type	AC
Rated short-circuit breaking capacity $I_{cn}$ according to AS/NZS 60898 at 230 VAC	6 kA
Rated short-circuit breaking capacity $I_{cn}$ according to AS/NZS 60898 at 400 VAC	6 kA
Max. rated operation voltage $U_e$	440 V
Rated insulation voltage $U_i$	440 V
Rated impulse withstand voltage $U_{imp}$	4 kV

## CONSTRUCTION

Additional equipment possible	No
Number of protected poles	3
Degree of protection (IP)	IP40

## MECHANICAL

Connectable conductor cross section solid-core	0.75-25 mm <sup>2</sup>
Connectable conductor cross section multi-wired	0.75-16 mm <sup>2</sup>

## DIMENSIONS

Height	85 mm
Width	52.5 mm
Depth	75.8 mm
Width in number of modular spacings	3
Weight	0.35 kg

## ENVIRONMENT

Pollution degree	3
------------------	---

# MD6M363

NHP MOD6+ Miniature Circuit Breaker MCB 6kA 3 Pole 63A C Curve



## ENVIRONMENT

Rated surrounding temperature without derating	30 °C
Ambient temperature during operating	-25...70 °C