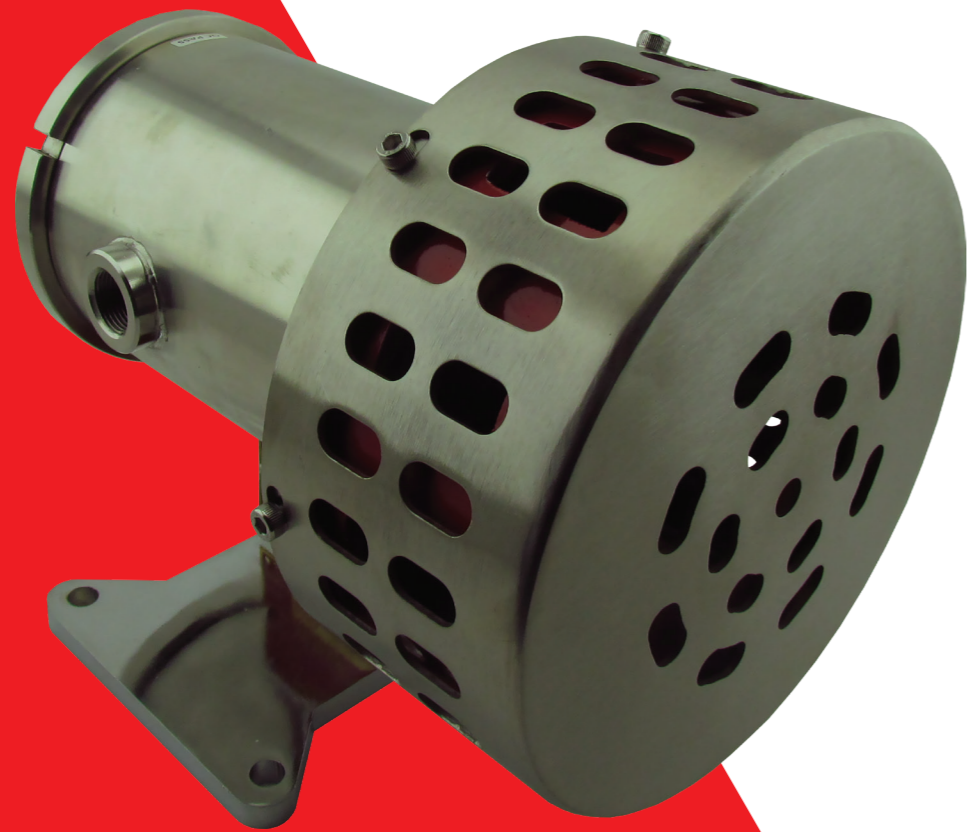


BANSHEE

Ex 26S Siren S1



This Motorised siren is suitable for use in fiery mines as well as petrochemical plants and areas where an explosion-protected device is required. The unit consists of a 304 type stainless steel housing with a M20 cable entry, a stainless steel nose cone and a unique screw on lid for cable connection.

BANSHEE EX 26S SIREN S1

SPECIFICATIONS

VOLTAGE	110VAC/DC 220VAC/DC
DUTY CYCLE	Continuous
SOUND OUTPUT	125dB(A) at 1m
SOUND FREQUENCY	660Hz
APP. RANGE	1500m in still air on open field
CURRENT CONSUMPTION*	110VAC/DC - 2A 220VAC/DC - 1A
CLASSIFICATION	Ex d I C 150°C Mb / Ex d IIC T4 Gb
CERTIFICATION	SAEX MS/11-433 X
GAS GROUPS	I, IIA, IIB, IIC
IGNITION GROUP	T4-135°C
IP RATING	IP 65
WEIGHT	11.3kg
PACKING DIMENSIONS	200x250x200mm

*Startup current x8 of nominal current

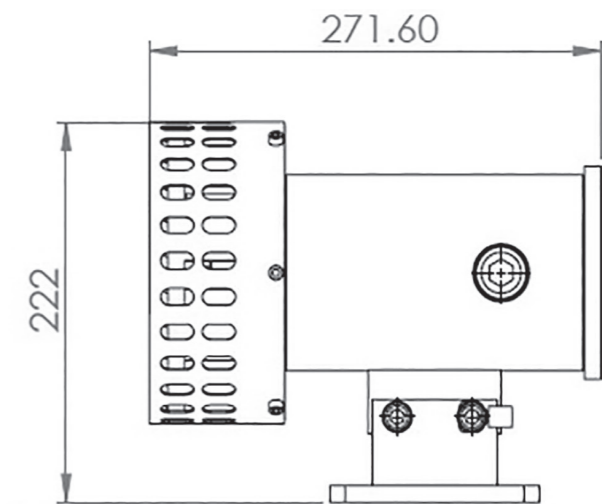
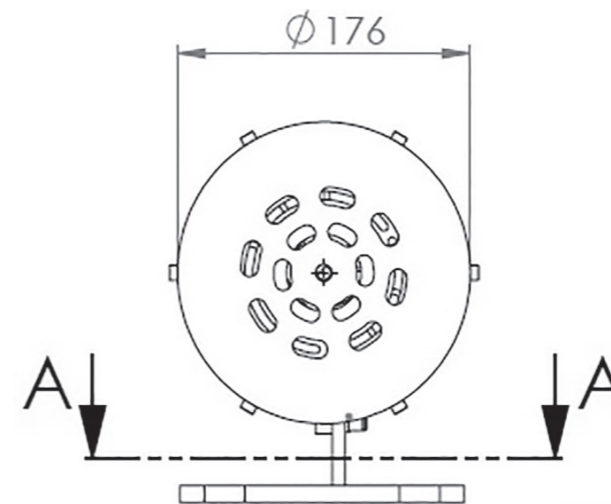


AVAILABLE IN THE FOLLOWING MATERIALS

Standard Stainless Steel with brass flanges

Complete 304 Stainless Steel

Complete 316 Stainless Steel



All dimensions are in mm

BANSHEE Part of the KAMA Group - www.kama.co.za