

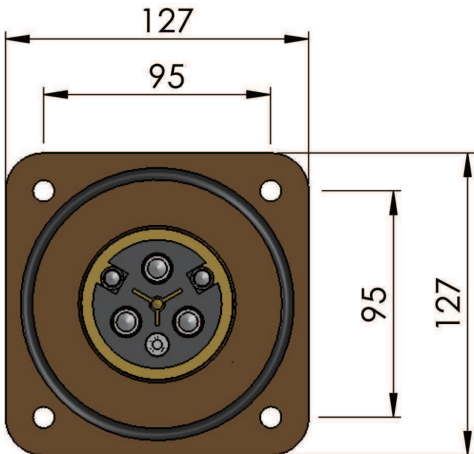
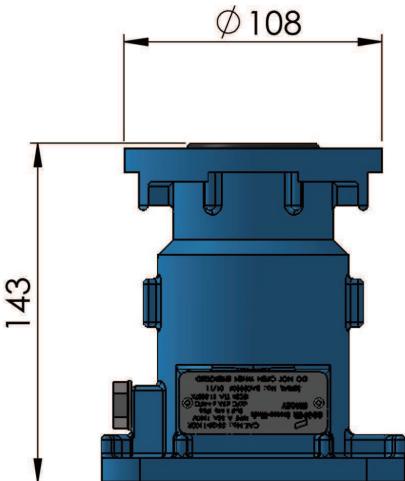
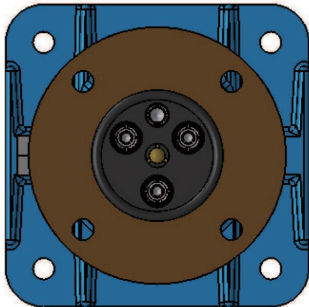
# Bolted Range

## 55A 660/1100V bolted adaptor

### Ordering Codes

To order a complete adaptor, please select:  
Adaptor and Thimble Kit

Part Number	Description
55-20-0660R	55A 660V Bolted Adaptor
55-20-1100R	55A 1100V Bolted Adaptor



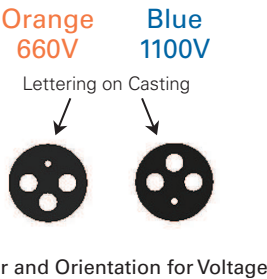
### Thimble Kit (table 1)

Part Number	Cable CSA
55-10-0400	10mm <sup>2</sup>
55-10-0700	25mm <sup>2</sup>
55-10-0900	35mm <sup>2</sup>

Each Thimble Kit consists of:

- 3 x Main thimbles
- 2 x Earth blocks
- 1 x Pilot thimble

All with their respective screws and washers



Material: Manganese Bronze /EPR Rubber  
Weight: Approx. 4.8kg  
Compliance: AS/NZS1300

### Spare Parts

To order spare parts, please identify from exploded view drawing & refer to appropriate table

Item	Part Number	Description	QTY.
1	55-20-0001	Housing 1100V	1
	55-20-0001-OR	Housing 660V	1
2	55-10-0004R	Interior c/w Sockets	1
3	195-05-0114	O-Ring	1
4	55-10-9007	Main Socket	3
5	55-30-0009	Pilot Thimble	1
6	150-90M-0903	Earth Block	2
7	55-10M-0800	Main Thimble	3
8	990-006-0012	Side Screw	2
9	950-604-1030-CP	Copper Washer	2
10	960-010-0012	Earth Bolt	1
11	950-001-0010	Earth Washer	1

