

MOSLX – 60W

Item	MOSLX-60W
LED Power	Philips 60W
Lumens	9600lm
Lumens Per Watt	160lm
LED CCT	3000-6500K
Monocrystalline Solar Panel	55W
LIFEPO4 Battery	120Ah 1536Wh
LIFEPO4 Battery Voltage	Rated Voltage: 12.8V
LIFEPO4 Battery Cycle	2000 cycles
Working Temperature	-10°C to 60°C
Charge Time	6~8hrs
Intelligent Controller	12V 10A MPPT Charge Controller with Microwave Sensor
Inbuilt Protection	Over Charge, Discharge, Heat and Overload Protection
Working Time	15hrs / Day, Light + Time + Microwave Sensor Control
Light Fitting Size	970*400*90mm
Net Weight	10.5KG
Material	Aluminium + Tempered Glass
IP Rating	IP65
Warranty	3 Years
Installation Height	6~14m
Distance Between Poles	<45m
Top of Pole Diameter	60mm

Lumens Key

Scale = Each Square is 2.5m

Black – 1 LUX

Dark blue- 0.5 LUX

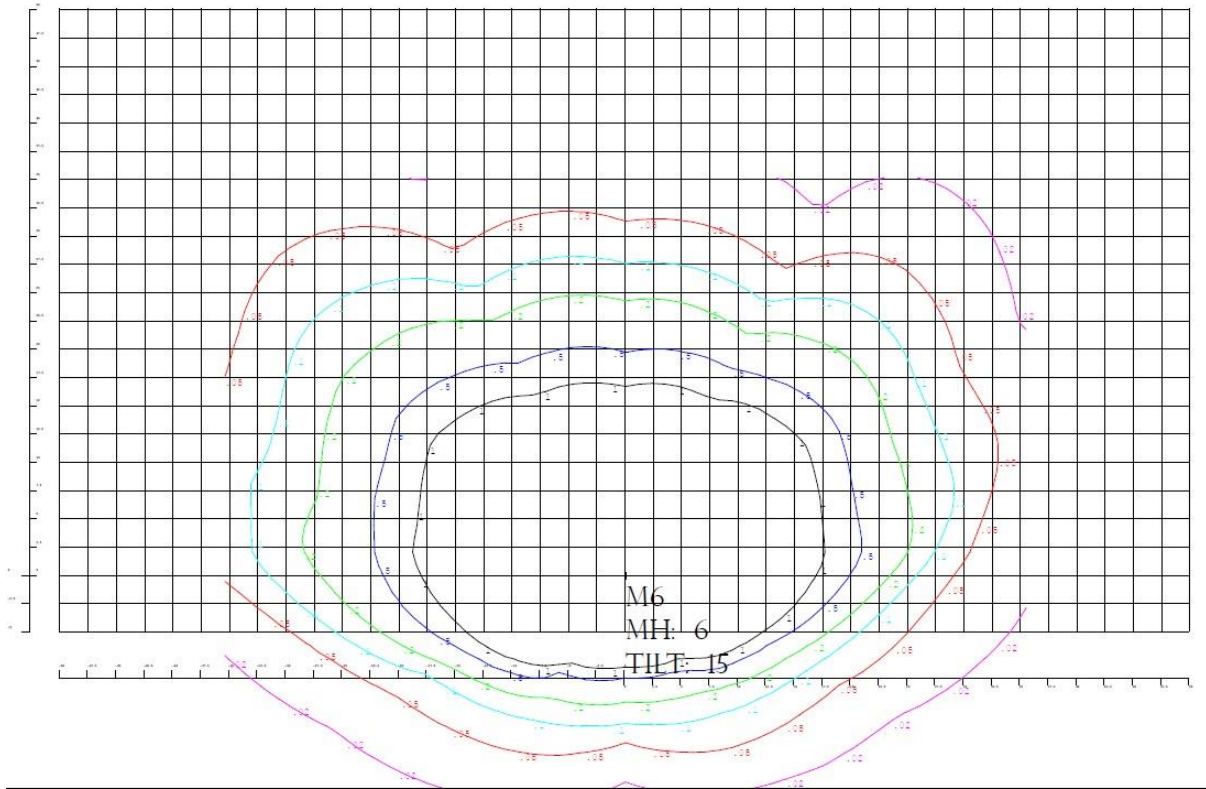
Green – 0.2 LUX

Light blue – 0.1 LUX

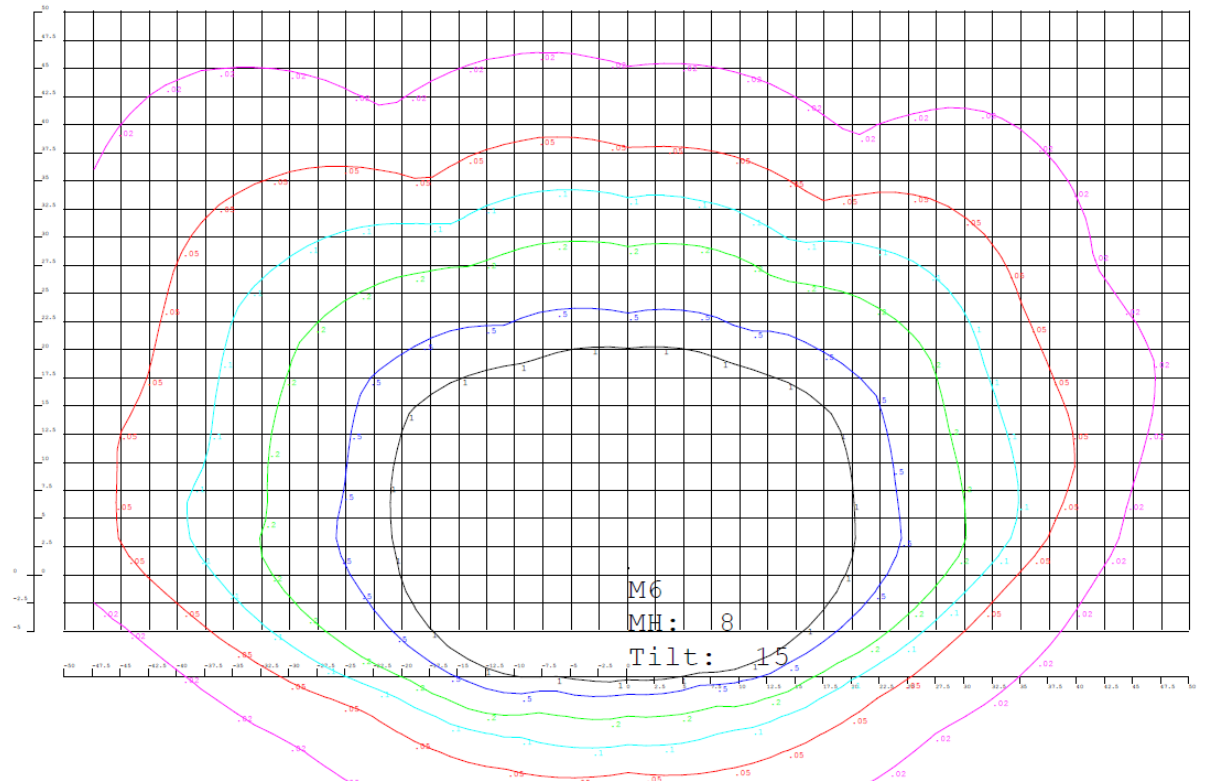
Red – 0.05 LUX

Pink – 0.02 LUX

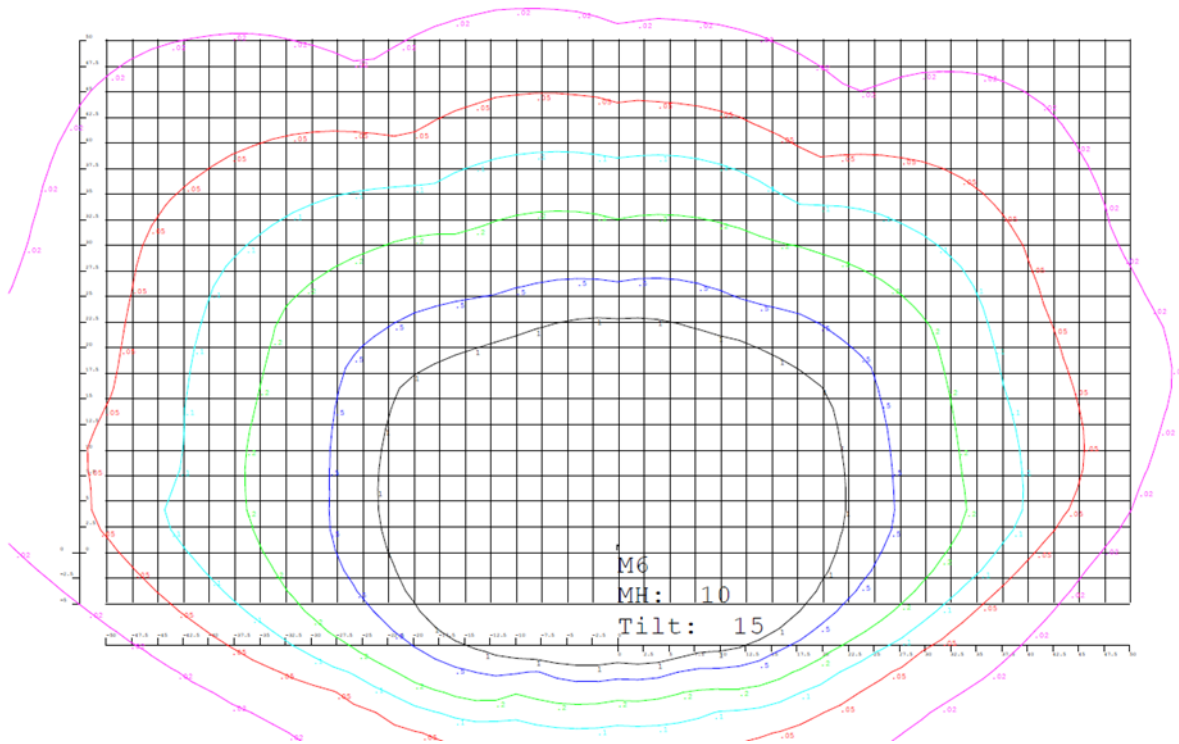
IES – 60W Lumen Output (70% Mode at 6M Height)



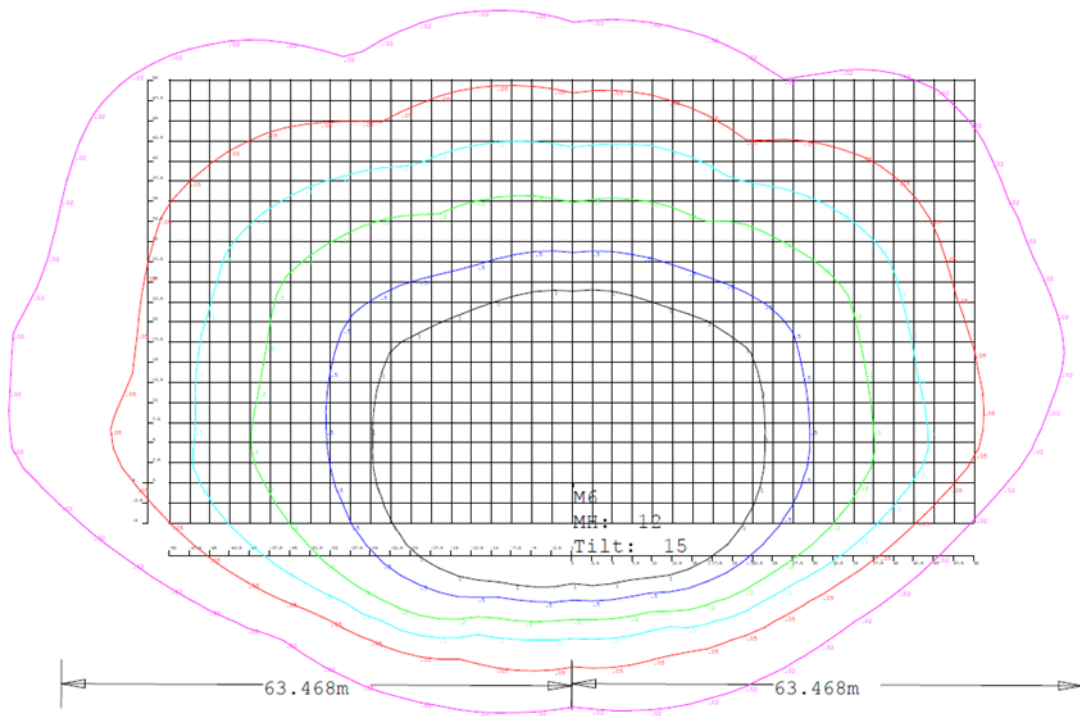
IES – 60W Lumen Output (70% Mode at 8m Height)



IES – 60W Lumen Output (70% Mode at 10m Height)



IES – 60W Lumen Output (70% Mode at 12m Height)



IES – 60W Lumen Output (70% Mode at 14m Height)

