

MR10/MR13 Multi XC

ML-MR10-MULTI-XC / ML-MR13-MULTI-XC



10/13 watt downlight with selectable multi colour output.

Product code/Category

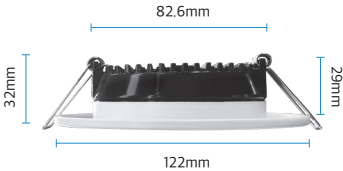
ML-MR10-MULTI-XC/ Downlights
ML-MR13-MULTI-XC/ Downlights

Product information

The MR10 and MR13 Multi XC both feature M-Elec's revolutionary new eXchangeable Connector system allowing multiple AC connection options for fast and reliable installation. With an all new driver design and multi output colour selection technology, the MR10/MR13 Multi XC combines warm white, neutral white and white outputs all in one eliminating the need to juggle different fittings. The ultra slim profile (only 32mm deep) to suit minimum ceiling clearance makes this light perfect for both new and retrofit installations. Coming complete with extra wide trim (white) to make retrofits easy and the XC compatible flex and plug, M-Elec's MR10/MR13 Multi XC is designed with the electrical contractor in mind!



	ML-MR10-MULTI-XC	ML-MR13-MULTI-XC
Total power consumed:	10W*	13W*
Lumen output:	760lm (WW) 880lm (NW) 790lm (W)	1,130lm (WW) 1,260lm (NW) 1,190lm (W)
Colour temperature:	3,000K (WW) 4,000K (NW) 6,000K (W)	
IP rating:	IP54	
CRI:	80+	
Efficacy:	80-84 lm/W	94-97lm/W
Beam angle:	100 degrees	
Dimmable:	Yes	
Power supply:	200-240V AC External driver 50-60Hz (ML-MR10MDXC)	200-240V AC External driver 50-60Hz (ML-MR13MDXC)
Average life:	50,000hrs**	
Dimensions:	Diameter 122 mm Depth 32 mm Cut-out 90 mm	
Optional upgrades:	Silver trim (ML-MR90-TS) Surface mount enclosure (ML-MRSMT-90) RAPID XC Connector (ML-BSRC-XC)	
Compliance:	AS/NZS 60598.1 & AS/NZS 60598.2.2	
Connection:	With XC connector flex and AU plug	



Included in the bag

- 1 x LED Downlight with white trim
- 1 x Dimmable driver
- 1 x XC flex & plug
- 1 x Installation instructions



*Total power consumed including driver
 ** Life span is calculated on expected average lifespan

MR10/MR13 Multi XC

ML-MR10-MULTI-XC / ML-MR13-MULTI-XC



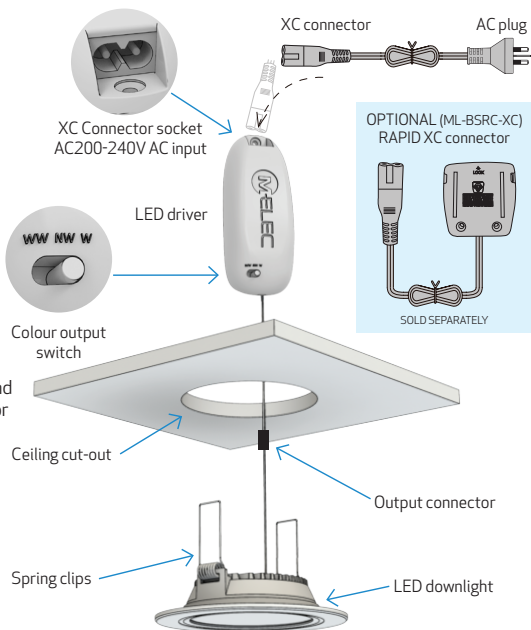
Installation instructions



PLEASE FOLLOW INSTRUCTIONS FOR CORRECT INSTALLATION:

1. Before commencing installation or maintenance, ensure electricity is **switched off at the mains**.
2. Remove existing downlight and disconnect old transformer OR mark and cut out 90 mm hole in ceiling.
3. Using the XC connector flex, plug in the XC connector to the LED driver. The XC connector may be inserted either way as it has universal polarity.
4. Insert the AC plug into an appropriate plug base and connect the LED downlight to the output connector from the LED driver.
5. Select desired colour output via the switch on the LED driver.
6. Carefully bend spring clips upwards and install new LED downlight in ceiling recess.

NOTE: For faster installation and no need to install plug base use the optional Rapid XC connector flex for instant connection to TPS cable.



PLEASE NOTE!

- **PLUG BASE AND WIRING INSTALLATION MUST BE INSTALLED BY A LICENSED ELECTRICIAN.**
- Do not extend low voltage cables from the output of the power supply.
- All components must not be mechanically stressed.
- Be careful not to damage or destroy conducting paths on the circuit board.
- Follow all relevant electrical and safety standards (including AS3000) – only qualified personnel should be allowed to perform installations.
- Correct electrical polarity needs to be observed as the wrong polarity may destroy the product which is not covered under warranty.
- Damaged by corrosion will not be honoured on the ELV side as a materials defect claim. It is the user's responsibility to provide suitable protection against corrosive agents such as moisture, condensation and other harmful elements.
- **Turn off electrical power before starting installation of light fixture.**
- If these regulations are not followed warranty will be void and all issues are the responsibility of the installer.
- This product has full compliance with the IC-4 rating and therefore can be covered in thermal insulation & be installed up against combustible material safely. M-Elec still recommends that an air gap is left around driver + light to ensure the maximum life span of the product is achieved. Please request test report for more details on IC-4.
- For further information including photometrics & dimming details, please visit us at www.melec.com.au.

Due to our policy of continuous product improvement, we reserve the right to discontinue or update product specifications or designs at any time without notice. Please visit www.melec.com.au for the latest information on our products

