

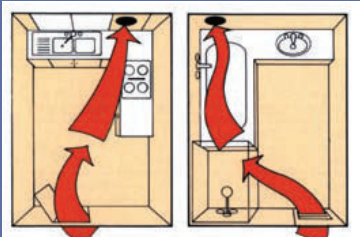
## exhaust fans



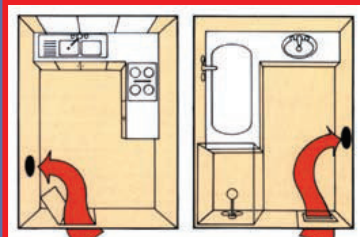
peace of mind  
for now and the future

- ✓ Omega's extensive range of exhaust fans and accessories are all specially selected for their suitability in a variety of environments. This ensures the fan invested in today will continue to provide comfort for many years to come.

### Correct Positioning



### Wrong Positioning



### Installation Advice

- For an exhaust fan to perform at maximum efficiency, the key requirement is a balanced airflow. This will encourage a "cross breeze" which is essential to clear either vapor or odors.
- If a wall or window fan is installed, it should be as high as possible.
- Do not position the fan close to air inlets, as this will encourage the fan to draw air from this source first.



### Lenco - Fan (with ball bearing motor)

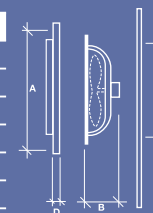
E8PBB 200mm (8") Ceiling Exhaust Fans  
E10PBB 250mm (10") Ceiling Exhaust Fans

### Lenco - Turbo Fan with 2 Speed Motor, Normal or Boost (with ball bearing motor)

E10TS 250mm (10") Ceiling Exhaust Fans

Approved for use in shower recesses and similar restricted areas.

Specifications	E8PBB	E10PBB
Area A (ref diagram)	267mm	337mm
Area B (ref diagram)	105mm	102mm
Type C (hole, ref diagram)	241mm	295mm
Area D (ref diagram)	15mm	15mm
Air Movement	284m <sup>3</sup> /HR	568m <sup>3</sup> /HR
AMPs	0.16	0.27
Watts	24	36
Ball Bearing Motor and Continuous Running	Yes	Yes



### Lenco - Window Exhaust Fan (with ball bearing motor)

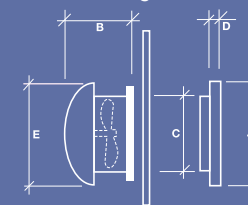
E7WM 175mm Window Fan (whole cut out 213mm)  
E8WM 200mm Window Fan (whole cut out 237mm)  
E10WM 250mm Window Fan (whole cut out 265mm)

Effective alternative in buildings where ceiling fans cannot be used. Specially manufactured for long life, it can be installed quickly and economically in windows with a minimum glass thickness of 4mm.

### Lenco - Skylight Exhaust Fan (with ball bearing motor)

E7WM-DD 175mm Skylight Fan  
E10WM-DD 250mm Skylight Fan

Helps maintain air freshness while keeping the walls and dome of the skylight cleaner. The fan is simple to install in both glass and acrylic skylights.

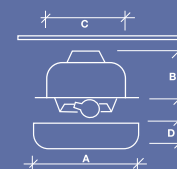


### Lenco - Fan Light

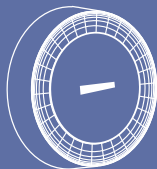
E8FL 210mm Fanlight (up to 100 Watt)

Both an exhaust fan and a light, ideal for bathrooms, toilets, laundries and kitchens. Approved for globes up to 100W, it can be installed with the fan and light operating either together or separately.

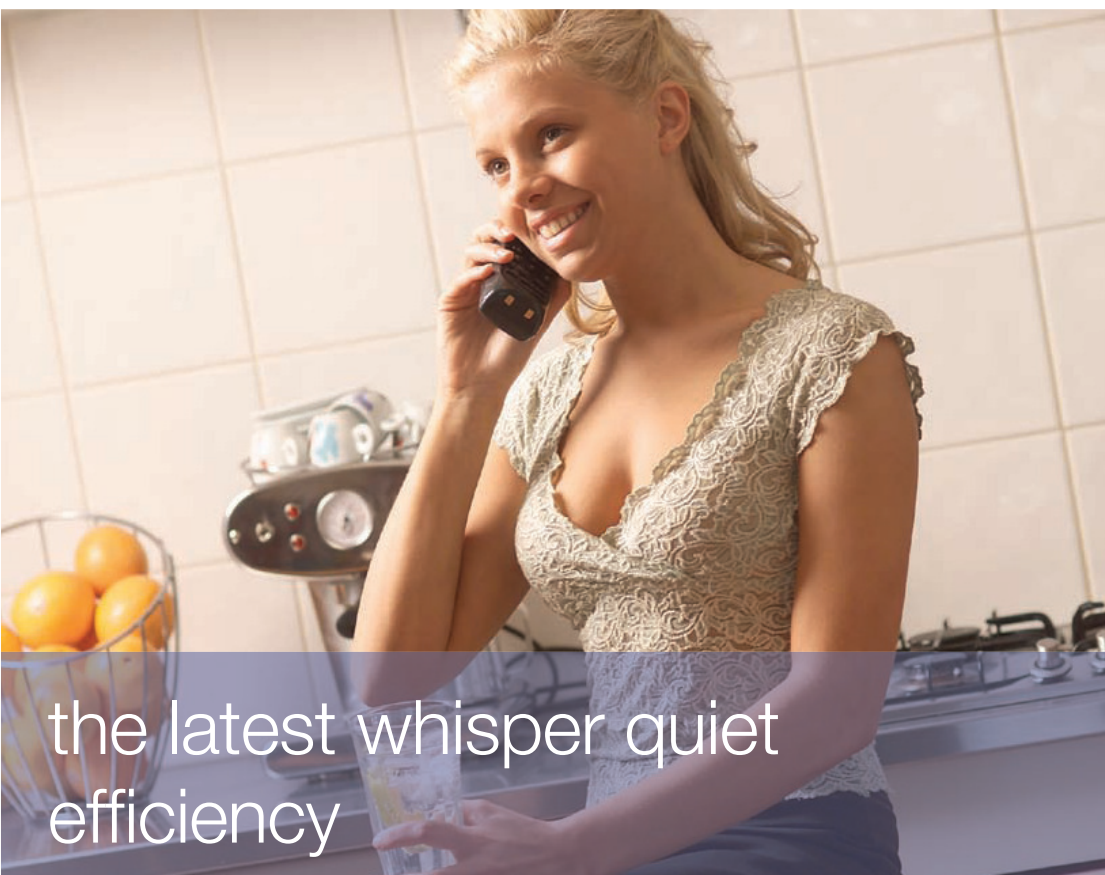
Specifications	E8FL
Area A (ref diagram)	315mm
Area B (ref diagram)	125mm
Type C (hole, ref diagram)	265mm
Area D (ref diagram)	90mm
Air Movement	265m <sup>3</sup> /HR
AMPs	0.22
Watts	30
Ball Bearing Motor and Continuous Running	Yes



Specifications	E7WM	E8WM	E10WM	E7WM-DD	E10WM-DD
Area A (ref diagram)	267mm	267mm	337mm	267mm	337mm
Area B (ref diagram)	150mm	140mm	177mm	150mm	177mm
Type C (hole, ref diagram)	213mm	237mm	270mm	213mm	270mm
Area D (ref diagram)	28mm	33mm	25mm	28mm	25mm
Area E (ref diagram)	260mm	295mm	345mm	270mm	345mm
Air Movement	205m <sup>3</sup> /HR	261m <sup>3</sup> /HR	480m <sup>3</sup> /HR	205m <sup>3</sup> /HR	480m <sup>3</sup> /HR
AMPs	0.20	0.32	0.40	0.20	0.40
Watts	22	40	46	22	46
Ball Bearing Motor and Continuous Running	Yes	Yes	Yes	Yes	Yes



# exhaust fans and accessories



the latest whisper quiet efficiency



## Vapotec - Steam Sensor

VTSOR

Vapotec Hard Wire Steam Sensor  
(electrician required for installation)

Remarkably simple, but ingenious electronic device designed to automatically turn your bathroom exhaust fan on when it senses the presence of steam. When all steam is cleared from the room Vapotec then automatically turns your fan off.



## Vapotec - Hi - Flow, Ducted Exhaust Fan

VX130

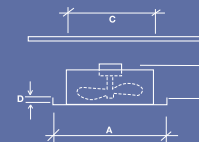
Hi-Flow Exhaust Fan Complete with 3M Ducting & Grill Roof, Eaves or Wall Mounting

Extract steam and clear the air quickly and quietly. Industrial quality components provide superior air flow and exceptional durability, which combined with innovative features such as the patented anti-water intrusion system make the VX130 Hi-Flow Fan ideal for domestic or commercial installation.



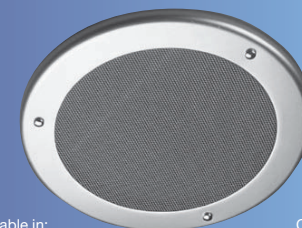
## Lenco - Metal Fan (with ball bearing motor)

E7M 175mm Metal Fan  
E8M 200mm Metal Fan  
E10M 250mm Metal Fan  
E12M 300mm Metal Fan



Its all-metal, long-life construction is heat-resistant. Ideal near stoves, the E12M model is particularly suited to large applications.

Specifications	E7M	E8M	E10M	E12M
Area A (ref diagram)	256mm	292mm	332mm	389mm
Area B (ref diagram)	120mm	117mm	135mm	148mm
Type C (hole, ref diagram)	195mm	235mm	270mm	325mm
Area D (ref diagram)	7mm	7mm	8mm	7mm
Air Movement	224m <sup>3</sup> /HR	330m <sup>3</sup> /HR	454m <sup>3</sup> /HR	666m <sup>3</sup> /HR
AMPs	0.35	0.35	0.40	0.57
Watts	40	40	52	80
Ball Bearing Motor and Continuous Running	Yes	Yes	Yes	Yes



Also available in:



Chrome

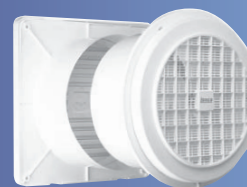
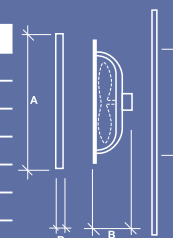
## Lenco - Metal Tone Fans

Metal surround available in a chrome and white finish (with ball bearing motor)

E10MT- CH 250mm Chrome  
E10MT - WH 250mm White

Smart, low-profile design enables it to hug the ceiling in unobtrusive yet stylish fashion. Powerful quiet ball bearing motor delivers all the performance you'll ever need.

Specifications	E10MT-CH/WH
Area A (ref diagram)	360mm
Area B (ref diagram)	102mm
Type C (hole, ref diagram)	295mm
Area D (ref diagram)	15mm
Air Movement	568m <sup>3</sup> /HR
AMPs	0.27
Watts	36
Ball Bearing Motor and Continuous Running	Yes



## Lenco - Wall Exhaust Fans (with ball bearing motor)

E6WF 150mm Fan - For walls 100mm to 300mm thick  
E8WF 210mm Fan - For walls 100mm to 300mm thick  
E10WF 250mm Fan - For walls 100mm to 300mm thick  
E8GM 210mm Fan - For walls 45mm to 90mm thick  
E10WF 250mm Fan - For walls 70mm to 130mm thick

Can be installed quickly and economically in solid brick, brick veneer or timber walls. Models E6WF, E8WF, E10WF and E12WF are suitable for walls 110-130mm thick by use of a telescopic duct included with each fan. Model E8GM is for walls 45-90 thick, E10GM is for walls 70-130mm thick.

Specifications	E6WF	E8WF	E10WF	E8GM	E10GM
Area A (ref diagram)	210mm	290mm	337mm	290mm	3341mm
Area B (ref diagram)	300mm	300mm	300mm	90mm	130mm
Area C (ref diagram)	110mm	110mm	110mm	45mm	70mm
Area D (ref diagram)	14mm	36mm	15mm	36mm	28mm
Area E (ref diagram)	220mm	302mm	395mm	302mm	395mm
Area F (ref diagram)	19mm	30mm	9mm	30mm	31mm
Area G (hole DIA)	155mm	245mm	275mm	245mm	275mm
Air Movement	132m <sup>3</sup> /HR	240m <sup>3</sup> /HR	480m <sup>3</sup> /HR	240m <sup>3</sup> /HR	480m <sup>3</sup> /HR
AMPs	0.35	0.32	0.43	0.27	0.40
Watts	40	45	55	36	52
Ball Bearing Motor and Continuous Running	Yes	Yes	Yes	Yes	Yes

