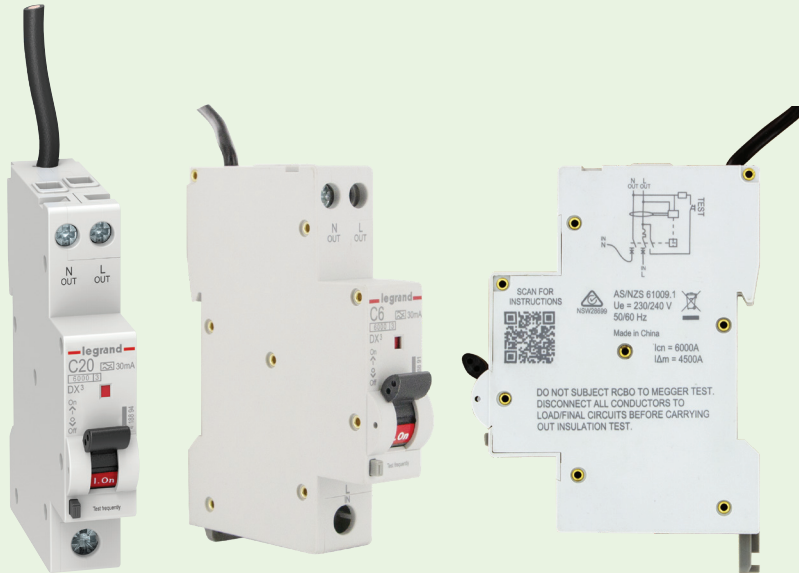


Q4 Launch

2022



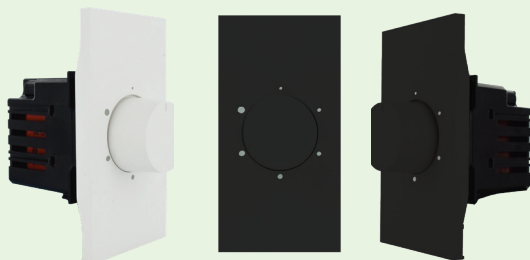
SINGLE POLE RCBO 1P+N



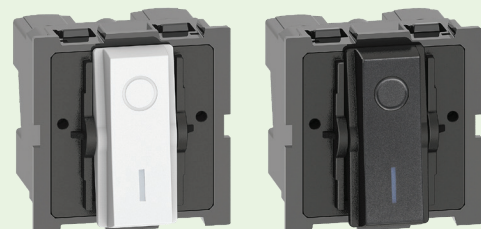
**SMOKE ALARM
EMI FILTER**



**EXCEL LIFE SMART WIRELESS
MASTER SWITCH AND
SHUTTER/BLIND SWITCHES**



**LIVING NOW FAN
CONTROLLER**



**LIVING NOW DOUBLE POLE
32A SWITCH**

SINGLE POLE RCBO 1P+N



| Cat No | Description | UoM | Trade Price |
|--------|---|-----|-------------|
| 418891 | DX3 SINGLE MODULE RCBO 6A 30MA 6KA WITH NEUTRAL TAIL | EA | \$49.00 |
| 418892 | DX3 SINGLE MODULE RCBO 10A 30MA 6KA WITH NEUTRAL TAIL | EA | \$49.00 |
| 418893 | DX3 SINGLE MODULE RCBO 16A 30MA 6KA WITH NEUTRAL TAIL | EA | \$49.00 |
| 418894 | DX3 SINGLE MODULE RCBO 20A 30MA 6KA WITH NEUTRAL TAIL | EA | \$49.00 |
| 418895 | DX3 SINGLE MODULE RCBO 25A 30MA 6KA WITH NEUTRAL TAIL | EA | \$49.00 |
| 418896 | DX3 SINGLE MODULE RCBO 32A 30MA 6KA WITH NEUTRAL TAIL | EA | \$49.00 |

Application:

Residential, Multi-Residential, Commercial

Specifications:

- 1P+N (both switching active and neutral)
- 6kA Breaking capacity
- 30mA Sensitivity
- From 6A to 32A ratings
- Type A - detect AC and DC component faults
- Supply from Bottom (Active IN)
- Neutral and Active OUT located on the Load side
- C Curve
- 230/240V~
- 50/60 Hz Frequency
- Comply with AS/NZS 61009.1

Features and benefits:

- DIN rail, Chassis mount, Load centres or Distribution boards
- Fast wiring with integrated flexible black neutral tail 900mm long (black), stranded
- Easy access to instruction manual with side located QR code
- Compact size 90mm height
- Bi-Connect (both fork and prong terminals located on line side)
- Compatible with prong or fork type busbars
- Control indicator Red "ON", Green "OFF"
- Bottom DIN clip to safely lock on DIN rail



COLLATERAL
AVAILABLE

D Data Sheet **I** Instruction Sheet **B** Brochure **F** Flyer **V** Video **P** Product Presentation **P** Photometry **H** HPM Website **L** Legrand Website **E** E-Catalogue **DB** Display Board

Disclaimer: The information provided in this document is intended for informational purposes only and has been prepared and reviewed with all reasonable care, believed to be correct at the time. Legrand Australia and New Zealand may also make improvements and/or changes in the products, pricing and/or programs described in this document at any time without notice.

SMOKE ALARM EMI FILTER



643093



SMOKE ALARM
NOT INCLUDED

| Cat No | Description | UoM | Trade Price |
|--------|--------------------------------|-----|-------------|
| 643093 | LEGRAND SMOKE ALARM EMI FILTER | EA | \$31.00 |

FALSE TRIGGERING SMOKE ALARMS

Can be used in installations where high levels of EMI signal interference are causing the smoke alarm to false trigger.

On some installations, the smoke alarm may be installed on a circuit shared with other devices that cause electrical interference within the circuit. This electrical noise and electromagnetic interference may cause the smoke alarm to beep or alarm when the electrical products are activated. Legrand 643093 smoke alarm EMI filter will filter out this interference which may cause the smoke alarm to be false triggered.

Application:

Residential, Multi-Residential, Commercial

Specifications:

| | |
|-----------------------|---------------------|
| Supply Voltage | 230 - 240 V ~ 50 Hz |
| Rated Current | 10 A |
| Operating Temperature | -25°C to 85°C |
| Safety Compliance | T5(UL,CSA,CE) |
| Leak Current | 0.8mA MAX |
| Insulation Resistance | 100m ohm min. |
| Attenuation | 0.6 ~ 60 MHz |

Features and benefits:

- Flammability corresponding to UL 94 V-0
- Easy installation and compact for space saving
- Suitable for connection to 230-240 V ~ 50 Hz smoke alarms
- Compatible with all Legrand range of smoke alarms
- Includes EMI filter, junction box with connectors and screws



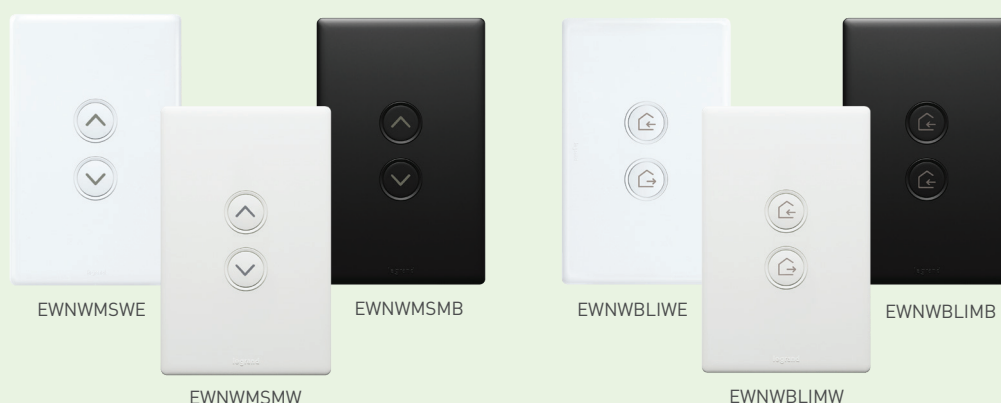
COLLATERAL
AVAILABLE

D Data Sheet **I** Instruction Sheet **B** Brochure **F** Flyer **V** Video **P** Product Presentation **P** Photometry **H** HPM Website **L** Legrand Website **E** E-Catalogue **DB** Display Board

Disclaimer: The information provided in this document is intended for informational purposes only and has been prepared and reviewed with all reasonable care, believed to be correct at the time. Legrand Australia and New Zealand may also make improvements and/or changes in the products, pricing and/or programs described in this document at any time without notice.

legrand®

EXCEL LIFE SMART WIRELESS MASTER SWITCH AND SHUTTER/BLIND SWITCHES



| Cat No | Description | UoM | Trade Price |
|-----------|---|-----|-------------|
| EWNWMSWE | EXCEL LIFE SMART WIRELESS MASTER SWITCH WHITE | EA | \$71.88 |
| EWNWMSMW | EXCEL LIFE SMART WIRELESS MASTER SWITCH MATT WHITE | EA | \$78.75 |
| EWNWMSMB | EXCEL LIFE SMART WIRELESS MASTER SWITCH MATT BLACK | EA | \$78.75 |
| EWNWBLIWE | EXCEL LIFE SMART WIRELESS SHUTTER/BLIND SWITCH WHITE | EA | \$71.88 |
| EWNWBLIMW | EXCEL LIFE SMART WIRELESS SHUTTER/BLIND SWITCH MATT WHITE | EA | \$78.75 |
| EWNWBLIMB | EXCEL LIFE SMART WIRELESS SHUTTER/BLIND SWITCH MATT BLACK | EA | \$78.75 |

Application:

- Residential
- Scenario control
- Shutter/blind control

Specifications:

- Battery operated: CR2032 (3V)
- Require the installation of Excel Life Smart gateway EWNSKIT series or cat no 412181
- Wireless shutter/blind switch: only works in conjunction with shutter micromodule Cat no. 067697

Features and benefits:

- Wireless Master On/Off switch:
 - Easily configure scenario in a few seconds via the Home+Control app.
 - Modifying a scenario is as easy and effective immediately
- Wireless shutter blind switch:
 - Easily paired with shutter micromodule in the Home+Control app.
 - Can control up to 20 Excel Life Smart shutter micromodules for multi-way operation of blinds/shutters



COLLATERAL
AVAILABLE

D Data Sheet
 I Instruction Sheet
 B Brochure
 F Flyer
 V Video
 P Product Presentation
 P Photometry
 H HPM Website
 L Legrand Website
 E E-Catalogue
 DB Display Board

LIVING NOW FAN CONTROLLER

bticino
LIVING
now



| Cat No | Description | UoM | Trade Price |
|--------|--------------------------------|-----|-------------|
| KW4017 | FAN CONTROLLER MECH 100W 2M WH | EA | \$38.48 |
| KG4017 | FAN CONTROLLER MECH 100W 2M BL | EA | \$38.48 |

Application:

Residential living spaces, bedrooms, laundry.

Specifications:

- 100VA
- 2 Modules size
- Delivered with key cover

Features and Benefits:

- Control range: 5 speed + OFF
- Compatible with most ceiling fans (to be bench-tested prior to installation)

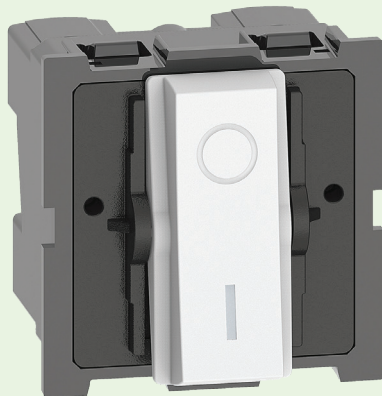


COLLATERAL
AVAILABLE

D Data Sheet **I** Instruction Sheet **B** Brochure **F** Flyer **V** Video **P** Product Presentation **P** Photometry **H** HPM Website **L** Legrand Website **E** E-Catalogue **DB** Display Board

LIVING NOW DOUBLE POLE 32A SWITCH

bticino
LIVING
now



KW4302V32



KG4302V32

| Cat No | Description | UoM | Trade Price |
|-----------|---------------------------------|-----|-------------|
| KW4302V32 | SWITCH MECH DBL POLE 32A 2M WH | EA | \$74.83 |
| KG4302V32 | SWITCH MECH DBL POLE 32A 2M BL | EA | \$74.83 |
| KW02M2 | KEY COVER MECH FOR KW4302V32 WH | EA | \$ 2.39 |
| KG02M2 | KEY COVER MECH FOR KG4302V32 BL | EA | \$ 2.39 |

Application:

Residential, Oven / large appliances switching

Specifications:

- 32A
- Double pole
- 2 Modules size

Features and Benefits:

- Easy to operate large switch
- Symbol marking on key cover for immediate identification of status



COLLATERAL
AVAILABLE

D Data Sheet **I** Instruction Sheet **B** Brochure **F** Flyer **V** Video **P** Product Presentation **PH** Photometry **H** HPM Website **L** Legrand Website **E** E-Catalogue **DB** Display Board

Disclaimer: The information provided in this document is intended for informational purposes only and has been prepared and reviewed with all reasonable care, believed to be correct at the time. Legrand Australia and New Zealand may also make improvements and/or changes in the products, pricing and/or programs described in this document at any time without notice.