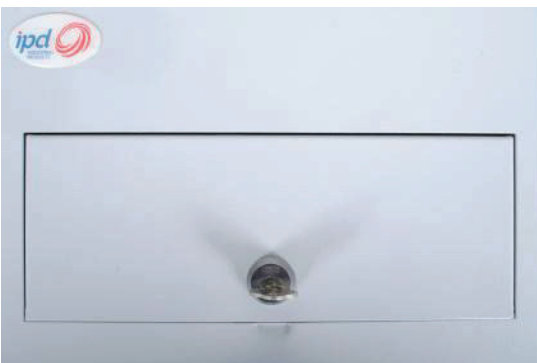


TLC METAL LOADCENTRES

FEATURES



- **Steel Thickness** : 2mm mild steel.
- **Painting colour** : RAL - 7035.
- **Painting type** : RIPPLE painted.
- **Painting Thickness** : 60-80 micrometer.
- **Busbar copper** : 2.0mm thickness, Purity :99.9%.
- **Chassis plastic** : Antiflaming ABS.
- **Brass Purity** : iCu 58.34%Zn 37.657% Pb 3.1854.
- Earth and neutral terminal included.
- 12,18,24 pole options available.
- Lock included.



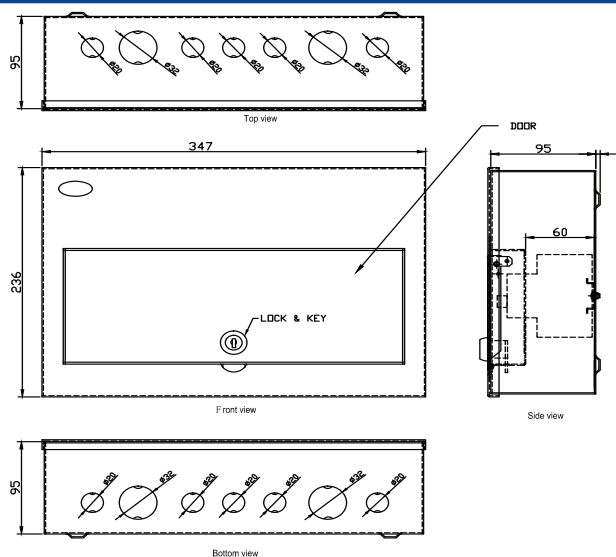
Other lock options available
Pictured is NSW PWD"E"LOCK

PART NUMBERS

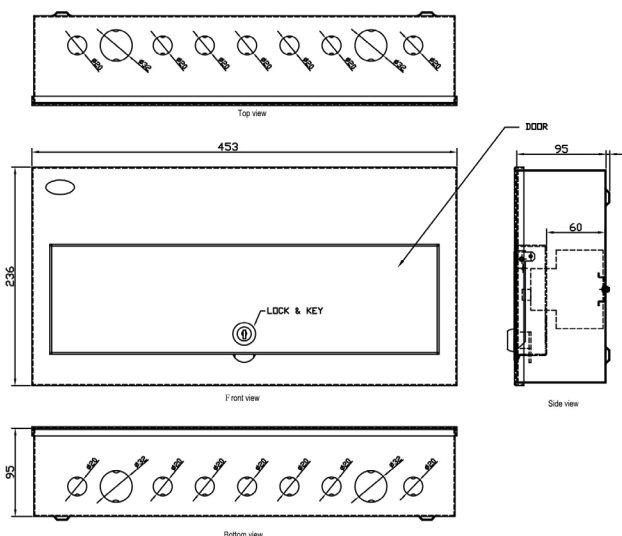
Description	Part No.
12 pole	TLC12P
18 pole	TLC18P
24 pole	TLC24P

DIMENSIONS

Removed Cover



Removed Cover

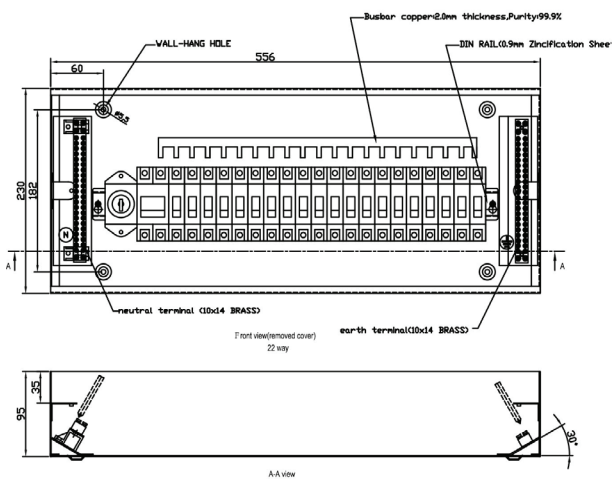


TLC METAL LOADCENTRES

DIMENSIONS

TLC24P Front view

Removed Cover



Closed Cover

