



Spec Sheet: IPD Safeclip Fuse Fittings

- Self cleaning, self aligning base contacts
- Clip-in fuse links, no tools required for fuse replacement
- Full shrouded contacts, IP20 degree of protection
- DIN rail mounting with easy to remove carrier
- Made from flame retardant thermoplastic

Standards

Australian Standard AS60269 and BS88 Part 6



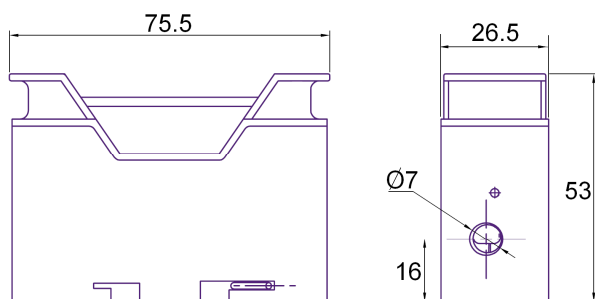
Range

Rated current (Ie)	32A
Rated voltage (Ue)	550V
Rated peak withstand current	80kA
Rated impulse withstand voltage (Uimp)	8kV
Screw mounting size (all)	M5
Weight 1P (Front wire)	0.1kg
Max Cable Size (front / rear)	16mm ²
Maximum tightening torque (front)	1.5-2Nm
Fuse type (suit all)	NS_

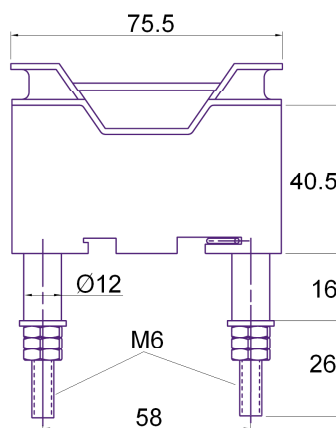
Rated Current (A)	Type of Connection	Colour	Pack Quantity	Catalogue Number
20A	Front Wire	Black	10	SC20H
		White		SC20HWH
32A	Front Wire	Black		SC32H
		White		SC32HWH
	Back Wire	Black	5	SC32BW
	Busbar / Front	Black		SC32BHA
	2 Stud Rear	Black		SC32P
	2 Stud Rear	White		SC32PWH
	Solid Neutral Link – suit white base	-	10	SC20/32LINK
-	Protective Boot – suit rear stud mod	Black		RS20/32S

Dimensions

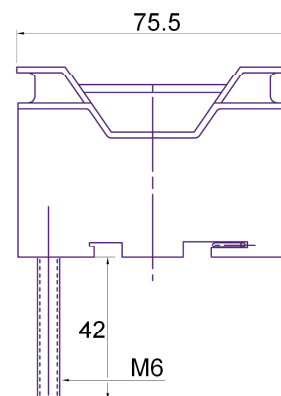
Front Wire



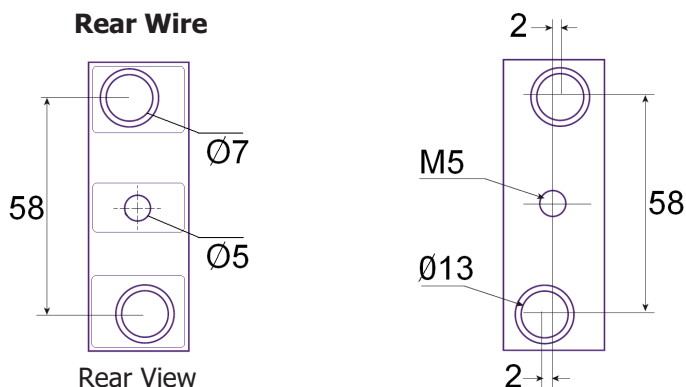
2 Stud Rear



Front / Stud



Rear Wire



**Panel Drilling
Rear Wire & Rear Stud
(front view)**