



Dry Contact Output Module

KASTA-S10IBH

Bluetooth Dry Contact Output Module

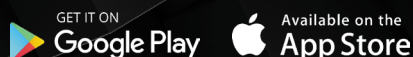
Smart Dry Contact Output module for the connection to and control of third-party equipment supporting Pulse and Toggle control modes with On / Auto Off and On/Off options. It can be manually operated, controlled by KASTA remote switch devices or controlled via the KASTA app. Use the app to configure the module, including automation functions.

Applications

Residential dwellings, Apartments, Commercial, Retail, Hospitality, Accommodation, New construction, Retrofit & Renovation

Accessories

Download the KASTA app



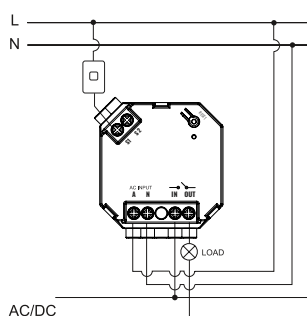
FEATURES

- Suitable for interconnection with Class I, Class II or Class III equipment
- Control third-party equipment such as garage doors, motorised gates, etc
- 5 wire connection for power, load and switch mechanism (momentary or toggle)
- 4 output modes – 1s, 6s and 9s pulse ON (auto OFF) and toggle ON/OFF (default setting 1s pulse)
- Short Press (or toggle) on input S1 or S2 to activate ON state
- Wireless Bluetooth Mesh communication
- Can be paired with KASTA remote switch devices for multi-way control (8x maximum)
- Configured and controlled using the KASTA app (iOS and Android)
- Supports Group, Scene, Timer and Scheduling automation functions
- Built in overvoltage protection
- Suits all Australian wall plates using a momentary or toggle mechanism
- 3 year warranty

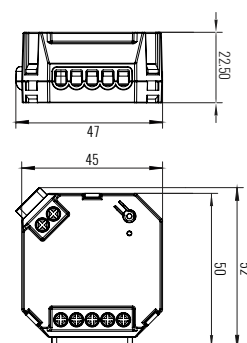
ELECTRICAL

Power Supply	220-240VAC 50Hz
Physical Connection Type	Terminals
Wiring Connections	Active, Neutral, Load, Switch Mechanism
Load Output Max.	2400W (10A)
Load Compatibility	0 to 240VAC 0 to 30VDC
Form Factor	Module (puck)
Housing Material	Polycarbonate (PC)
Dimensions (WxDxH)	47mm x 52mm x 22.5mm
IP Rating	IP20
Operating Ambient Temp.	-20 to 50°C
Standards Complied	AS/NZS 60669.2.1 AS/NZS 60669.1 AS/NZS 60950.1 AS/NZS CISPR 15 AS/NZS 4268

CONNECTION DIAGRAM



DIMENSIONS



Specification subject to change without prior notice. Last updated 29/11/2019

kasta.com.au