

MSL & MPC system

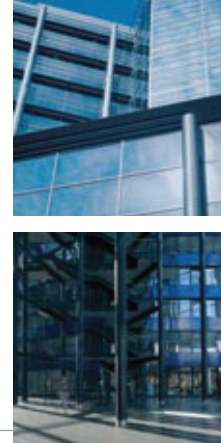
MSL moulded in nylon or PP hinged fitting black and grey RAL7031.

Pull off strength 10kg with FPP21.

MPC nylon compression fitting black. Pull off strength 15kg with FPY20.

IP40

IP65



MSL

straight hinged fitting external thread

Nylon and PP hinged, snap on fittings including locknuts.



Ext Metric (Nylon)

Ext Metric (PP)

MPC

straight nylon external thread

Nylon compression fitting, external thread including locknut.



Ext Metric

EC

end cap

Nylon PA66 end cap to snap over end of conduit and provide a smooth entry bush.



End Cap

FCL

nylon conduit clip with integral lid

Nylon PA66 conduit clip with integral lid for increased security. Incorporates internal ribs to prevent conduit from pulling through.



Conduit Clip

nominal size (mm)

OD mm

European (NW) sizes

				FCL10	10	10.0	7
					10		7
					11	11.5	8
		MPC-12-M16		FCL13	13	13.0	10
					13		10
					13		10
			EC16B	FCL16	16	15.8	12
					16		12
					16		12
		MPC-16-M16		FCL16	16	16.1	12
				FCL18	18	18.5	14
					18		14
MSL-21-M20	MSL-21-M20-PP	MPC-20-M20	EC21B	FCL20	20	20.0	
				FCL21	21	21.2	17
					21		17
					21		17
				FCL25	25	25.0	
MSL-26-M25	MSL-26-M25-PP	MPC-25-M25		FCL25	25.4	25.4	22
			EC28B	FCL28	28	28.5	23
					28		23
		MPC-32-M32	EC34B	FCL34	34	34.5	29
					34		29
			EC42B	FCL42	42	42.5	36
					42		36
			EC54B	FCL54	54	54.5	48
					54		48
					67	67.0	56

STANDARDS



BS EN IEC 61386

