

FSB system galvanised steel core, pvc coated, galvanised steel overbraid



LFHUBRD system galvanised steel core, extra LFH coated, stainless steel overbraid



CONDUIT

FITTINGS

FSB

Construction: Galvanised steel, helically wound, flexible conduit with pvc coating and galvanised steel overbraid. Colour zinc, self colour.

Typical Applications: Industrial environments where higher abrasion resistance or screening are required.

LFHUBRD

Construction: Galvanised steel, helically wound, flexible conduit with extra LFH coating and stainless steel (316) overbraid.

Typical Applications: Metro rail stations where LFH, EMC screening and anti-vandal properties are required. Compliant to LUL std 1-085.



M

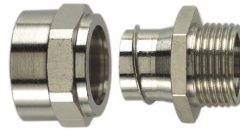
fixed external thread nickel plated brass

Two part fitting comprising of shell and body with external thread. This fitting can be inserted into a knockout and secured with a locknut.

S

swivel external thread nickel plated brass

Two part fitting comprising of shell and body. The external thread swivels about the main body. Can be used with threaded entries, or knockout secured with a locknut.



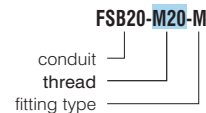
nominal size (mm)	FSB		LFHUBRD			
	part number	reel length (m)	outside dia (mm)	inside dia (mm)	min inside bend radius (mm)	
12	FSB12	25	15.2	10.2	30	
16	FSB16	25	18.2	13.0	40	
20	FSB20	LFHUBRD20	22.7	16.9	45	
25	FSB25	LFHUBRD25	27.2	21.1	55	
32	FSB32	LFHUBRD32	35.2	28.1	70	
40	FSB40		45.7	37.6	80	
50	FSB50		57.7	48.4	90	

metric thread part number	PG thread part number	metric thread part number	PG thread part number
FSB12-M16-M	FSB12-PG9-M	FSB12-M16-S	FSB12-PG9-S
FSB16-M16-M	FSB16-PG11-M	FSB16-M16-S	FSB16-PG11-S
FSB16-M20-M		FSB16-M20-S	
FSB20-M20-M	FSB20-PG16-M	FSB20-M20-S	FSB20-PG16-S
FSB25-M25-M	FSB25-PG21-M	FSB25-M25-S	FSB25-PG21-S
FSB32-M32-M	FSB32-PG29-M	FSB32-M32-S	FSB32-PG29-S
FSB40-M40-M	FSB40-PG36-M	FSB40-M40-S	FSB40-PG36-S
FSB50-M50-M	FSB50-PG48-M	FSB50-M50-S	FSB50-PG42-S

ORDERING NOTES

- Add reel length eg: FSB20-25M for 25m reel
- Available on request:
 - longer lengths, cut lengths and assemblies
 - additional sizes, stainless steel overbraided
 - PG threads, female threaded fittings
 - full copies of independent test report confirming screening effectiveness

How to read the fittings code



STANDARDS



BS EN IEC 61386



* refer to conduit properties for applicable standards

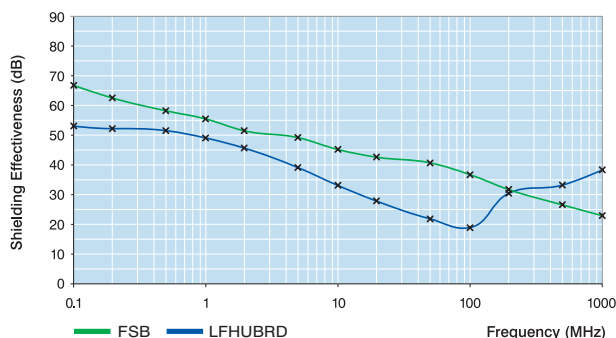
properties

- High mechanical strength
- Tensile strength with standard fittings 120kg for 20mm size
- Tensile strength with C type fittings 300kg for 20mm size
- Highly flexible
- IP rating: IP54 for standard fittings, IP65 for C type fittings
- High abrasion resistance
- Resists hot metal swarf and splashes
- Provides EMC screening
- Temperature range
 - 15°C to +70°C (FSB)
 - 20°C to +90°C (LFHUBRD)
- LFHUBRD is extra low fire hazard
- Compliant to LUL Std 1-085 (LFHUBRD)
- Nickel plated brass fittings
- Vibration and shock tested to EN61373 Cat 2



IP54		IP65		IP65		IP65	
P		C		C-S		C90	
plain hole connector nickel plated brass		fixed external thread nickel plated brass		swivel external thread nickel plated brass		external thread elbow nickel plated brass	
Two part fitting comprising of shell and body without thread. The body is fitted through the opposite side of the entry to the conduit and acts as a locking device also providing a smooth entry bush.		Multipart compression fitting including elastomeric seal. Can be used for knockouts. Braid is locked between inner and outer compression nuts.		Multipart compression fitting including elastomeric seal can be used for knockouts or threaded entries. Braid is locked between inner and outer compression nuts.		Multipart 90° compression fitting including elastomeric seal. Braid is locked between inner and outer compression nuts.	
hole size (mm)	part number	metric thread part number	PG thread part number	metric thread part number	metric thread part number	metric thread part number	nominal size (mm)
12	FSB12-P						12
16	FSB16-P	FSB16-M16-C	FSB16-PG11-C	FSB16-M16-C-S	FSB16-M16-C90		16
		FSB16-M20-C	FSB16-PG13-C	FSB16-M20-C-S	FSB16-M20-C90		16
20	FSB20-P	FSB20-M20-C	FSB20-PG16-C	FSB20-M20-C-S	FSB20-M20-C90		20
25	FSB25-P	FSB25-M25-C	FSB25-PG21-C	FSB25-M25-C-S	FSB25-M25-C90		25
32	FSB32-P	FSB32-M32-C	FSB32-PG29-C	FSB32-M32-C-S	FSB32-M32-C90		32
40	FSB40-P						40
50	FSB50-P						50

EMC SCREENING PERFORMANCE



TECHNICAL DRAWING

