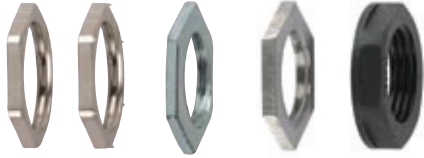


ACCESSORIES

**metric locknuts**

nickel plated brass, plated steel, stainless steel, nylon black or grey



nickel plated brass part number  
 nickel plated EMC part number  
 plated steel part number  
 stainless steel part number  
 nylon part number

|       |           |       |         |         |         |
|-------|-----------|-------|---------|---------|---------|
| B-M12 |           |       |         | LM12-N# | SP-M12* |
| B-M16 |           | S-M16 | SS-M16  | LM16-N# | SP-M16  |
| B-M20 | B-M20-EMC | S-M20 | SS-M20  | LM20-N# | SP-M20  |
| B-M25 | B-M25-EMC | S-M25 | SS-M25  | LM25-N# | SP-M25  |
| B-M32 | B-M32-EMC | S-M32 | SS-M32  | LM32-N# | SP-M32  |
| B-M40 | B-M40-EMC | S-M40 | SS-M40  | LM40-N# |         |
| B-M50 |           | S-M50 | SS-M50* | LM50-N# |         |
| B-M63 |           | S-M63 | SS-M63* | LM63-N# |         |
| B-M75 |           |       |         |         |         |

**stop plug**

nylon metric black



metric part number

**PG locknuts**

nickel plated brass, nylon black or grey



nickel plated brass part number

nylon part number

**stop plug**

nylon PG



PG part number

|        |         |         |
|--------|---------|---------|
| B-PG7  | PG7-N#  | SP-PG7* |
| B-PG9  | PG9-N#  | SP-PG9  |
| B-PG11 | PG11-N# | SP-PG11 |
| B-PG13 | PG13-N# | SP-PG13 |
| B-PG16 | PG16-N# | SP-PG16 |
| B-PG21 | PG21-N# | SP-PG21 |
| B-PG29 | PG29-N# | SP-PG29 |
| B-PG36 | PG36-N# |         |
| B-PG42 | PG42-N# |         |
| B-PG48 | PG48-N# |         |

# add B or G to specify colour. eg. LM20-NB for Black

**rubber end sleeves**



part number  
 to fit conduit size  
 outlet ID mm

|         |       |   |
|---------|-------|---|
| ES10-13 | 13    | 5 |
| ES14-17 | 16    | 5 |
| ES17-20 | 20/21 | 7 |
| ES19-22 | 21    | 8 |
| ES21-24 | 25    | 9 |

**90° elbow**

internal and external threaded nickel plated brass 90° elbow



threads  
 part number

|     |          |
|-----|----------|
| PG7 | BM90-PG7 |
| M16 | BM90-16M |
| M20 | BM90-20M |
| M25 | BM90-25M |
| M32 | BM90-32M |
| M40 | BM90-40M |
| M50 | BM90-50M |

**couplers**

nickel plated brass internally threaded



thread  
 metric thread part number

|     |         |
|-----|---------|
| M16 | B-M16-C |
| M20 | B-M20-C |
| M25 | B-M25-C |
| M32 | B-M32-C |
| M40 | B-M40-C |
| M50 | B-M50-C |
| M63 | B-M63-C |
| M75 | B-M75-C |

\* indicates parts made to order on request and may be subject to MOQ and lead time

## sealing washers

neoprene and fibre face sealing washers



metric thread  
part number

metric thread  
part number

PG thread  
part number

PG thread  
part number

|      |      |        |        |
|------|------|--------|--------|
| SW12 | FW12 | SWPG7  | FWPG7  |
| SW16 | FW16 | SWPG9  | FWPG9  |
| SW20 | FW20 | SWPG11 | FWPG11 |
| SW25 | FW25 | SWPG13 | FWPG13 |
| SW32 | FW32 | SWPG16 | FWPG16 |
| SW40 | FW40 | SWPG21 | FWPG21 |
| SW50 | FW50 | SWPG29 | FWPG29 |
| SW63 | FW63 | SWPG36 | FWPG36 |
|      |      | SWPG42 |        |
|      |      | SWPG48 | FWPG48 |

## earthing washers

shake proof washer



metric thread  
part number

earth tag washer



metric thread  
part number

|       |        |
|-------|--------|
| SPW16 |        |
| SPW20 | ET-M20 |
| SPW25 | ET-M25 |
| SPW32 |        |

## fixing clips

plated steel with black pvc liner or stainless steel.

LFH liner available on request



to fit conduit size

part number

part number

|    |       |           |
|----|-------|-----------|
| 10 | FCC10 | FCC10-SS* |
| 12 | FCC12 | FCC12-SS* |
| 16 | FCC16 | FCC16-SS  |
| 20 | FCC20 | FCC20-SS  |
| 25 | FCC25 | FCC25-SS  |
| 32 | FCC32 | FCC32-SS  |
| 40 | FCC40 | FCC40-SS  |
| 50 | FCC50 | FCC50-SS* |
| 63 | FCC63 |           |
| 75 | FCC75 |           |

## conduit clip

NEW

nylon conduit clip with integral lid - black or grey



conduit clip for  
corrugated

conduit clip for  
plain or rigid

|       |          |
|-------|----------|
| FCL10 |          |
| FCL13 |          |
| FCL16 | FCL16B-P |
| FCL20 | FCL20B-P |
| FCL25 | FCL25B-P |
| FCL34 | FCL33B-P |
| FCL42 |          |
| FCL54 |          |

## cable glands

NEW

Our range of Cable glands provides an easy to assemble, fast fit, liquid tight solution for multipurpose applications.

Available in four colours, Black, Red (RAL 3020), White and Light Grey (RAL 7035) they have been designed to provide the highest degree of functionality and safety.



| Thread Size | Black Part No. | Red Part No. | White Part No. | Grey Part No. | Thread Length (mm) | Cable Dia (min) (mm) | Cable Dia (max) (mm) | Spanner Size (mm) | Pack Quantity |
|-------------|----------------|--------------|----------------|---------------|--------------------|----------------------|----------------------|-------------------|---------------|
| M16         | CGM16B         | CGM16R       | CGM16W         | CGM16G        | 11                 | 5                    | 10                   | 22                | 100           |
| M20         | CGM20SB        | CGM20SR      | CGM20SW        | CGM20SG       | 11                 | 6                    | 12                   | 24                | 100           |
| M20         | CGM20B         | CGM20R       | CGM20W         | CGM20G        | 11                 | 10                   | 14                   | 27                | 100           |
| M25         | CGM25B         | CGM25R       | CGM25W         | CGM25G        | 11                 | 13                   | 18                   | 33                | 50            |
| M32         | CGM32B         |              |                |               | 11                 | 18                   | 25                   | 41                | 25            |

Red, white and grey supplied with locknut. Black supplied without locknut.



| Thread Size | Nickel plated brass | Thread Length (mm) | Cable Dia (min) (mm) | Cable Dia (max) (mm) | Spanner Size (mm) | Pack Quantity |
|-------------|---------------------|--------------------|----------------------|----------------------|-------------------|---------------|
| M16         | B-M16-CG            | 12                 | 4.5                  | 10                   | 20                | 10            |
| M20         | B-M20-CG            | 12                 | 7                    | 13                   | 24                | 10            |
| M25         | B-M25-CG            | 12                 | 9                    | 17                   | 29                | 10            |
| M32         | B-M32-CG            | 15                 | 11                   | 21                   | 36                | 2             |
| M40         | B-M40-CG            | 15                 | 19                   | 28                   | 45                | 2             |
| M50         | B-M50-CG            | 15                 | 27                   | 35                   | 54                | 1             |

### Technical Details

- Material: PA6
- IP Rating; IP68 (4 bar)
- Nitrile Rubber seal
- Produced and tested in accordance with EN 50262:1999
- Temperature range; -20°C to +90°C

### Technical Details

- Material: Nickel plated brass
- IP Rating; IP68 (10bar) + IP69K
- Produced and tested in accordance with EN 50262:1999
- Temperature range; -40°C to +100°C (static)  
-20°C to +100°C (dynamic)
- UL Listed

available on request: EMC versions, short threaded, Reduced clamp range.

## STANDARDS

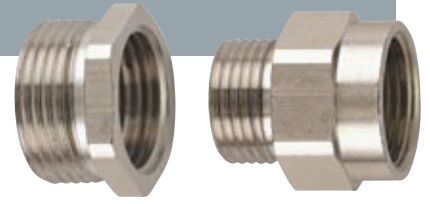


\* refer to technical details

## ACCESSORIES

### convertors

nickel plated brass thread convertors, reducers and enlargers external and internal thread



#### Metric Threads

| external thread | internal thread | M16        | M20        | M25        | M32        | M40        | M50       |
|-----------------|-----------------|------------|------------|------------|------------|------------|-----------|
| M16             |                 |            | B-M16-M20  |            |            |            |           |
| M20             |                 | B-M20-M16  |            | B-M20-M25  |            |            |           |
| M25             |                 |            | B-M25-M20  |            | B-M25-M32  |            |           |
| M32             |                 |            |            | B-M32-M25  |            | B-M32-M40  |           |
| M40             |                 |            |            |            | B-M40-M32  |            |           |
| M50             |                 |            |            |            | B-M50-M32  | B-M50-M40  |           |
| M63             |                 |            |            |            |            | B-M63-M40  | B-M63-M50 |
| PG7             |                 | B-PG7-M16  |            |            |            |            |           |
| PG9             |                 | B-PG9-M16  | B-PG9-M20  |            |            |            |           |
| PG11            |                 | B-PG11-M16 | B-PG11-M20 |            |            |            |           |
| PG13.5          |                 | B-PG13-M16 | B-PG13-M20 |            |            |            |           |
| PG16            |                 | B-PG16-M16 | B-PG16-M20 | B-PG16-M25 |            |            |           |
| PG21            |                 |            | B-PG21-M20 | B-PG21-M25 | B-PG21-M32 |            |           |
| PG29            |                 |            | B-PG29-M20 | B-PG29-M25 | B-PG29-M32 | B-PG29-M40 |           |
| PG36            |                 |            |            |            | B-PG36-M32 | B-PG36-M40 |           |
| PG42            |                 |            |            |            |            |            |           |
| PG48            |                 |            |            |            |            | B-M48-M40  |           |
| ½" NPT          |                 |            | B-050-M20  |            |            |            |           |
| ¾" NPT          |                 |            | B-075-M20  | B-075-M25  |            |            |           |
| 1" NPT          |                 |            |            |            | B-100-M32  |            |           |

#### PG Threads

| external thread | internal thread | PG7        | PG9        | PG11        | PG13.5      | PG16        | PG21        | PG29        | PG36        |
|-----------------|-----------------|------------|------------|-------------|-------------|-------------|-------------|-------------|-------------|
| M16             |                 | B-M16-PG7  | B-M16-PG9  | B-M16-PG11  |             |             |             |             |             |
| M20             |                 | B-M20-PG7  | B-M20-PG9  | B-M20-PG11  | B-M20-PG13  | B-M20-PG16  | B-M20-PG21  |             |             |
| M25             |                 |            |            |             |             |             | B-M25-PG21  |             |             |
| M32             |                 |            |            |             |             |             |             | B-M32-PG29  |             |
| M40             |                 |            |            |             |             |             |             | B-M40-PG29  |             |
| M50             |                 |            |            |             |             |             |             |             | B-M50-PG36  |
| PG7             |                 |            | B-PG7-PG9  |             |             |             |             |             |             |
| PG9             |                 | B-PG9-PG7  |            | B-PG9-PG11  |             |             |             |             |             |
| PG11            |                 | B-PG11-PG7 | B-PG11-PG9 |             | B-PG11-PG13 |             |             |             |             |
| PG13.5          |                 | B-PG13-PG7 | B-PG13-PG9 | B-PG13-PG11 |             | B-PG13-PG16 |             |             |             |
| PG16            |                 | B-PG16-PG7 | B-PG16-PG9 | B-PG16-PG11 | B-PG16-PG13 |             | B-PG16-PG21 |             |             |
| PG21            |                 |            |            | B-PG21-PG11 | B-PG21-PG13 | B-PG21-PG16 |             | B-PG21-PG29 |             |
| PG29            |                 |            |            |             |             | B-PG29-PG16 | B-PG29-PG21 |             | B-PG29-PG36 |
| PG36            |                 |            |            |             |             |             |             | B-PG36-PG29 |             |
| PG42            |                 |            |            |             |             |             |             |             | B-PG42-PG36 |
| PG48            |                 |            |            |             |             |             |             |             | B-PG48-PG36 |