

// RESIDENTIAL RANGE

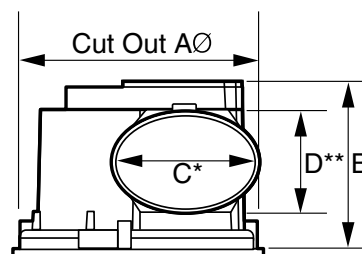
RAPID RESPONSE 250HP

DUCTED CEILING FAN



The Rapid Response 250HP header box exhaust fan is the quietest and most powerful in its class. Its aerodynamic and fully optimised design minimises resistance and produces strong, efficient air flow performance.

- Rapid Response 250HP (RESPF150/T) provides stronger air flow performance than other Rapid Response models to ensure steam is cleared from rooms such as bathrooms and ensuites.
- It includes features such as a unique swing clip and removable spigot that makes it very easy to install.
- Advanced impeller and housing design provides powerful air flow and minimises noise.
- Can be retrofitted into an existing standard 10" round fan cut out.
- Low resistance non-return backdraft damper maximises air flow performance.
- Matching grilles are easy to remove, which makes cleaning easy.
- Includes sealed for life ball bearings.
- High strength swing clips make installation easy.
- Available with a modern square or round grille (See page 32-33). Square grille can be easily rotated to align with walls.
- Available with 3-15 minute adjustable run-on timer (RESPF150T).



RESPF150 comes with spigot to suit 150mm duct.

MODEL NO.	DESCRIPTION	CUT OUT AØ	B	C*	D**
RESPF150	Fan body	290	197	170	120
RESPF150T	Fan body with run-on timer				

All dimensions in mm

MODEL NO.	AIR FLOW M³/HR†	AIR FLOW L/SEC†	FAN SPEED RPM	AVG. dB(A) @ 3M	WATTS	VOLTS
RESPF150 RESPF150T	349	97	950	37	60	230-240

† Air flow without duct and fittings

SPECIAL NOTE

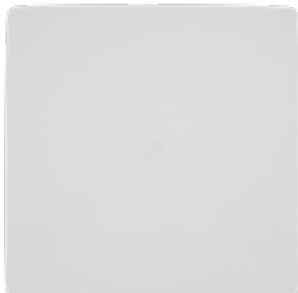
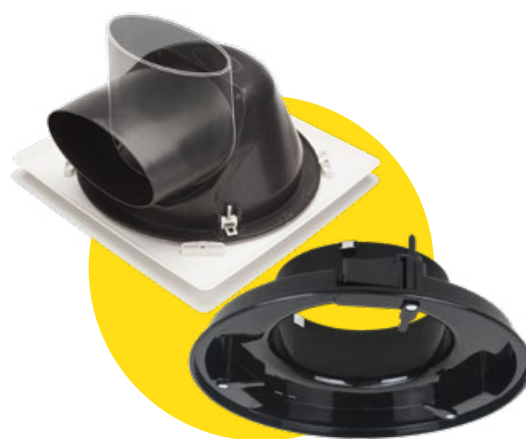
Timer model RESPF150T includes a plug and lead to suit HPM 33, or Clipsal 413/4P bases (with 4 pin sockets).



RESPG150RNBK



RESPG150SQBK

RESPG8-RNWH
RESPG150RNWHRESPG8-SQWH
RESPG150SQWH

See page 67 for grille to duct connector
& ceiling grille with clip-in spigot.

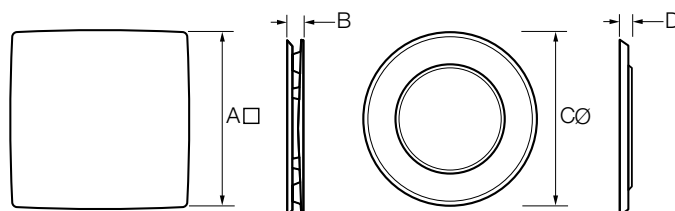
RAPID RESPONSE

GRILLES



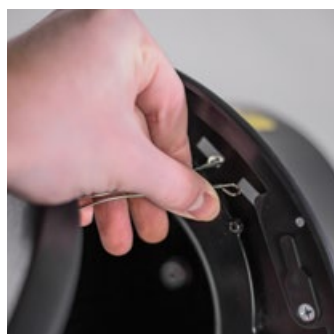
The stylish Rapid Response Grilles have a contemporary design and are available in a white or black finish.

- Available in Round and Square models.
- Available in 2 sizes to suit 8" and 10" Rapid Response header box fan models.
- Stylish, contemporary design.
- Quick & easy to install.
- Can be retrofitted to a previously installed Rapid Response Fan.



MODEL NO.	GRILLE	A	B	C	D
RESPG8-SQWH	8" Square Grille White Finish	300	28	-	-
RESPG8-RNWH	8" Round Grille White Finish	-	-	294	19
RESPG150SQWH	10" Square Grille White Finish	353	30	-	-
RESPG150RNWH	10" Round Grille White Finish	-	-	332	24
RESPG150SQBK	10" Square Grille Black Finish	353	30	-	-
RESPG150RNBK	10" Round Grille Black Finish	-	-	332	24

All dimensions in mm



Round Grille Installation

Pinch the ends of the metal spring clips together.

Feed the clips through the small slots on either side of the fan body.



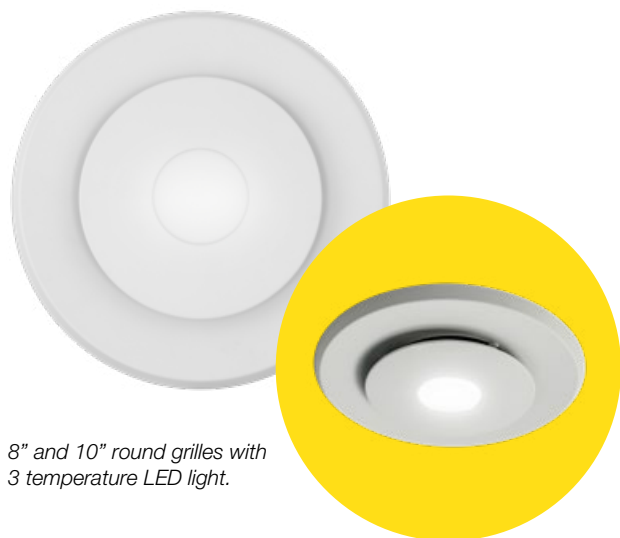
Square Grille Installation

Push the grille onto the base of the fan until the clips click into place.

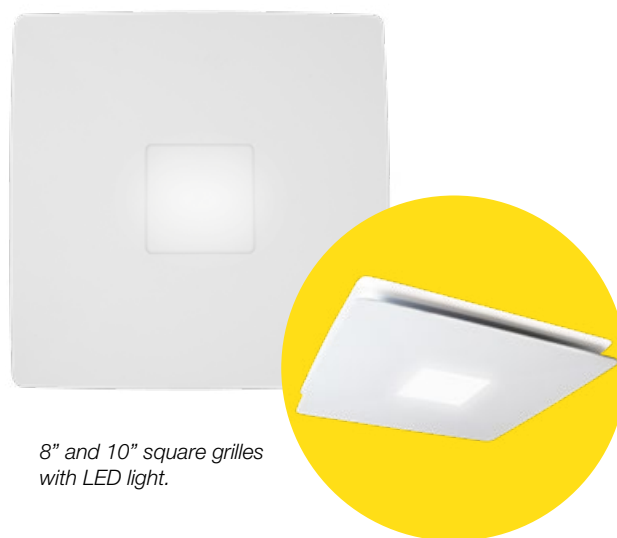
Rotate the grille to the desired position.



Scan the code or take a look on our website to watch the fan in action



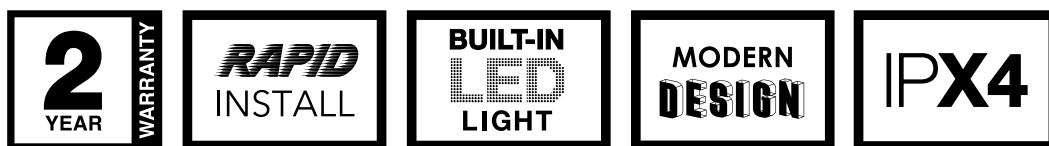
8" and 10" round grilles with 3 temperature LED light.



8" and 10" square grilles with LED light.

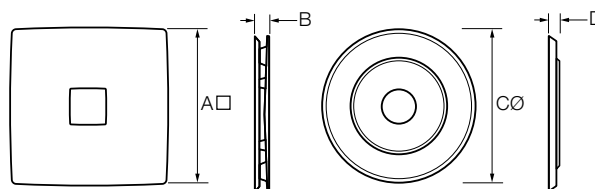
RAPID RESPONSE

GRILLES WITH LED



The stylish and modern Rapid Response Grille with LED light will brighten up any bathroom, ensuite or toilet. LED light in round grilles can be set to cool, neutral or warm white by changing the Tri-Switch's position. The Rapid Response grilles are quick to install and can be easily removed for cleaning.

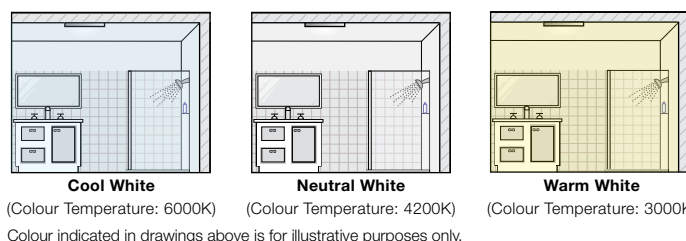
- Available in Round and Square models.
- Available in 2 sizes to suit 8" and 10" Rapid Response header box fan models.
- Stylish, contemporary design.
- LED light & Rapid Response Fan can be controlled separately.
- Quick & easy to install.
- Can be retrofitted to a previously installed Rapid Response Fan.
- LED light in round grilles can be set to cool, neutral or warm white to match other installed lights.
- Complies to: AS/NZS 60598.2.2:2001 and AS/NZS 60598.1:2013 Certificate No.: SAA152082.



MODEL NO.	GRILLE	A	B	C	D
RESPG8-SQWH-LED	8" Square Grille White Finish with LED	300	28	-	-
RESPG8-RNWH-TRILED	8" Round Grille White Finish with Tri-Switch LED	-	-	294	19
RESPG150SQWH-LED	10" Square Grille White Finish with LED	353	30	-	-
RESPG150RNWH-TRILED	10" Round Grille White Finish with Tri-Switch LED	-	-	332	24

All dimensions in mm

MODEL NO.	GRILLE	LUMENS (LM)	INPUT POWER (W)	COLOUR TEMP (K)	BEAM ANGLE (°C)
RESPG8-SQWH-LED	Square	1000	12	4200	180
RESPG8-RNWH-TRILED	Round	800	9	3000/4200/6000	180
RESPG150SQWH-LED	Square	1000	12	4200	180
RESPG150RNWH-TRILED	Round	800	9	3000/4200/6000	180



TRI-SWITCH LED (ROUND GRILLES ONLY)

Round grilles come factory pre set to neutral white (4200K), but can be changed to warm white (3000K) or cool white (6000K) by changing the position of Tri-Switch located on back of grille.



EFFECTIVE VENTILATION FOR INTERNAL POWDER ROOMS

Internal powder rooms can be difficult to ventilate properly due to the long duct runs associated with the installation. The Fantech Trade Rapid Response is the most powerful ducted ceiling mounted exhaust fan on the market.

VENTILATION SYSTEMS FOR CATHEDRAL CEILING AND SUB-FLOOR INSTALLATIONS

Don't trap your fan between tight ceiling spaces. Low profile fans and rigid flat duct are ideal for cathedral ceilings or between sub-floors in multi-story apartments or houses.

HOME WITH CATHEDRAL CEILING

Cathedral ceiling

A rigid duct 'Flat Pack' system has smooth inner surfaces to minimise pressure loss, while its "easy-to-fit" components make it easy to install.

Header box extraction fans such as the Rapid Response have been designed to fit into low ceiling heights. Ideal for clearing bathrooms of steam or toilets of odours.

APARTMENT WITH LIMITED CEILING SPACE

Sub-floor space

