

xBoard Aussie Series Distribution Board

Wombat Boards IP66



Eaton's Aussie series distribution boards have evolved through our intimate knowledge of the industry, along with feedback from electrical contractors, consulting engineers and end users, to provide solutions to a wide range of electrical distribution applications in commercial buildings. The Aussie Series delivers safe, reliable and high-performance protection of electrical power distribution systems in accordance with AS/NZS61439.

Features and benefits

- Eaton's Distribution Board range are designed to meet the new standard AS/NZS61439-3
- Easy to select, install and use
- Fitted with an adjustable and removable chassis
- The front door on Eaton's Distribution Boards are both reversible and removable
- Our gland plates on the top and bottom are also removable for easy access and convenience
- Our Distribution Board range comes with a universal swing handle locking system.
- Standard N42 Grey, X15 Orange with other colours are available upon request
- Fitted with NZM series switch disconnecter and encapsulated or Isolation chassis for safety and flexibility
- Fitted with split earth and neutral bars with copper cross links
- Knockouts for DIN rail accessories provided for easy placing of control equipment

Technical data

- Standard: AS/NZS 61439-3
- Voltage range: 3-Phase, rated voltage 240/415V, 50Hz
- Degree of protection: Outdoor use IP66
- Enclosure thickness: 1.6mm Solid construction
- Enclosure material: Powder coated mild sheet steel enclosure
- External Dimensions 600mm (W) x 253mm (D)

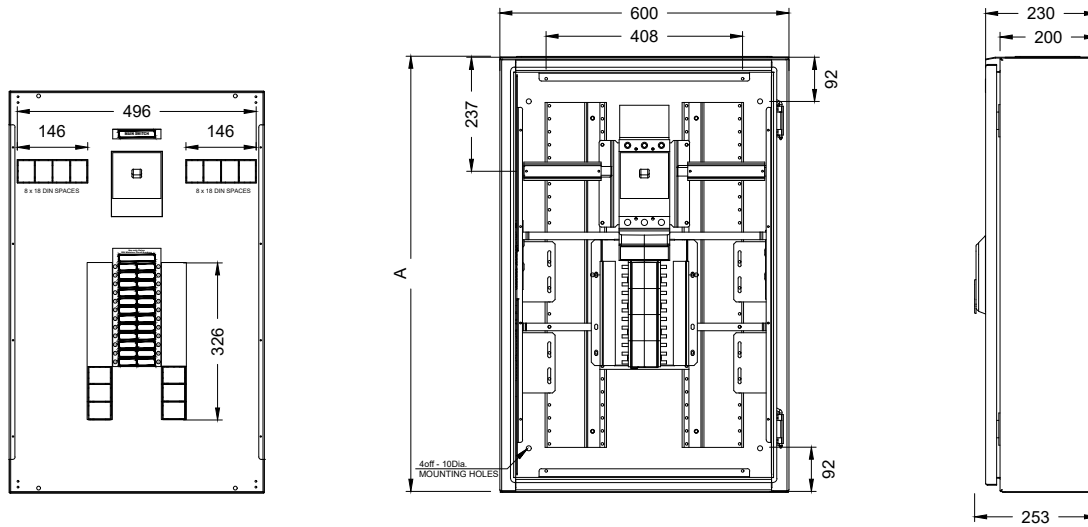
Indoor/Outdoor distribution board to suit Eaton xPole/xEffect miniature circuit protection devices 415V, 10 kA-1s & 25kA-0.1s Top Feed Rated Current 250A Split Earth and Neutral Bar 165A with copper cross links



No. of Poles	Height (mm)	Accessory DIN module space	Material Number Grey	Material Number Orange	Units per package
Main switch disconnecter					
3-pole					
24	900	16	XB66GY09-25SD24	XB66OR09-25SD24	1/1
36	900	16	XB66GY09-25SD36	XB66OR09-25SD36	1/1
48	1100	16	XB66GY11-25SD48	XB66OR11-25SD48	1/1
60	1100	16	XB66GY11-25SD60	XB66OR11-25SD60	1/1
72	1400	16	XB66GY14-25SD72	XB66OR14-25SD72	1/1
84	1400	16	XB66GY14-25SD84	XB66OR14-25SD84	1/1
96	1400	16	XB66GY14-25SD96	XB66OR14-25SD96	1/1
Main switch disconnecter					
Extra DIN Rail					
3-pole					
24	900	40	XB66GY09-25SD24D	XB66OR09-25SD24D	1/1
36	900	40	XB66GY09-25SD36D	XB66OR09-25SD36D	1/1
48	1100	40	XB66GY11-25SD48D	XB66OR11-25SD48D	1/1
60	1100	40	XB66GY11-25SD60D	XB66OR11-25SD60D	1/1
72	1400	40	XB66GY14-25SD72D	XB66OR14-25SD72D	1/1
84	1400	40	XB66GY14-25SD84D	XB66OR14-25SD84D	1/1
96	1400	40	XB66GY14-25SD96D	XB66OR14-25SD96D	1/1

xBoard Aussie Series - Distribution Board

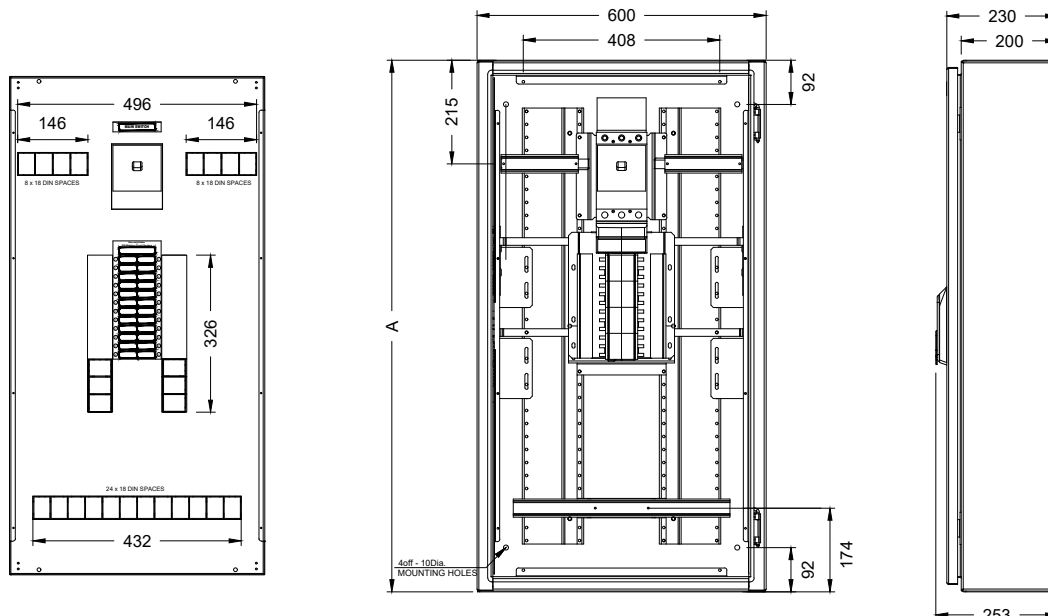
Technical Data - Wombat Boards IP66



Material No - GREY (250A MAIN SWITCH)	Material No - ORANGE (250A MAIN SWITCH)	Material No - GREY (250A MCCB MAIN SWITCH)	Material No - ORANGE (250A MCCB MAIN SWITCH)	A DIM.(MM)	Pole Size
XB66GY09-25SD24	XB66OR09-25SD24	XB66GY09-25MC24	XB66OR09-25MC24	900	24
XB66GY09-25SD36	XB66OR09-25SD36	XB66GY09-25MC36	XB66OR09-25MC36	900	36
XB66GY11-25SD48	XB66OR11-25SD48	XB66GY11-25MC48	XB66OR11-25MC48	1100	48
XB66GY11-25SD60	XB66OR11-25SD60	XB66GY11-25MC60	XB66OR11-25MC60	1100	60
XB66GY14-25SD72	XB66OR14-25SD72	XB66GY14-25MC72	XB66OR14-25MC72	1400	72
XB66GY14-25SD84	XB66OR14-25SD84	XB66GY14-25MC84	XB66OR14-25MC84	1400	84
XB66GY14-25SD96	XB66OR14-25SD96	XB66GY14-25MC96	XB66OR14-25MC96	1400	96

Technical Data - Wombat Boards IP66

Main Switch Disconnecter with Additional DIN Rail



Material No - GREY (250A MAIN SWITCH)	Material No - ORANGE (250A MAIN SWITCH)	A DIM.(MM)	Pole Size
XB66GY11-25SD24D	XB66OR11-25SD24D	1100	24
XB66GY11-25SD36D	XB66OR11-25SD36D	1100	36
XB66GY14-25SD48D	XB66OR14-25SD48D	1400	48
XB66GY14-25SD60D	XB66OR14-25SD60D	1400	60
XB66GY17-25SD72D	XB66OR17-25SD72D	1700	72
XB66GY17-25SD84D	XB66OR17-25SD84D	1700	84
XB66GY17-25SD96D	XB66OR17-25SD96D	1700	96