

IS-A105N



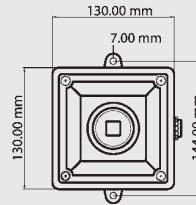
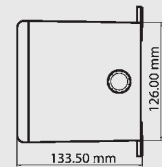
- Electronic sounder up to 105dB
- IECEx EExia IIC T4 Intrinsically Safe, zone 0
- 49 tones
- 3 stage alarm
- Automatically synchronises on multi-sounder systems
- Combines with L101L-IS beacon
- IP66



Specifications:

Voltage: 8-30V.d.c. via zener barrier
Current: 25mA at nominal voltage
Sound output: 105dB @1m
Sound Frequency: 49 tones see tone list on page 346
Protection: IP66
Temp Rating (°C): -40 to +60
Duty: continuous
Cable Entry: 2 x 20mm gland knockouts
Construction: Flame retardant ABS
Weight: 0.75Kg
Approval: EEx ia IIC T4
Certificate No: IECEx (SIR 04. 0038X)

Unit may be powered by any certified zener barrier with output parameters not exceeding-Uo: 28VDC Io: 110mA Po: 0.85W

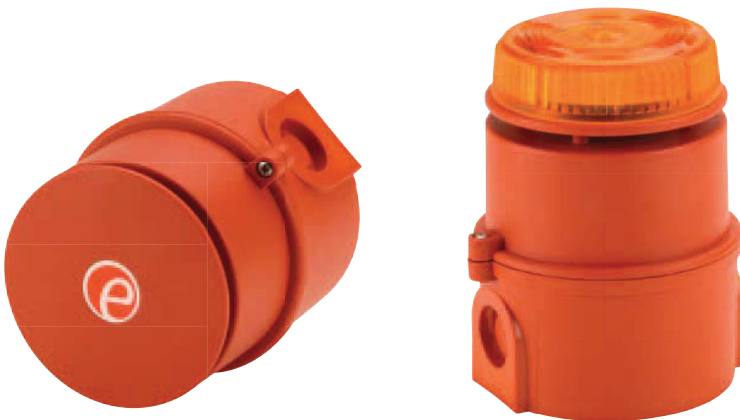


Order Code	Description
ESS2010ISCX	IS-A105N sounder
MTL7728	MTL7728+ I/S barrier 28V
ESS97006	IS-A105N- ISL101L combination kit

IS-MA1 and IS-MC1



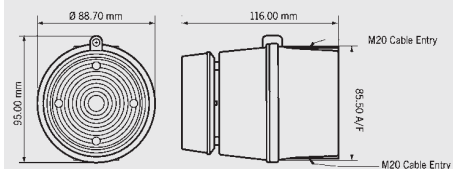
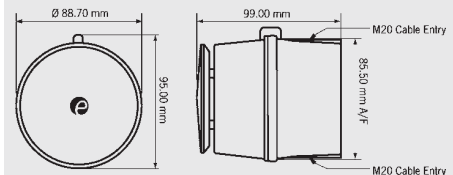
- Electronic sounder or sounder/beacon up to 100dB @ 1m
- ANZEx and IECEx EExia IIC T4 Intrinsically Safe, zone 0
- 49 tones
- 3 stage alarm
- Automatically synchronises on multi-sounder systems (sounder only)
- IP65



Specifications:

Voltage: 16-28VDC via zener barrier
Current: 25mA
Sound Output: 100dB @ 1m
Sound Frequency: 49 tones refer page 346
Light Output: 23cd(e)
Flash Rate: 1Hz or 2Hz selectable
Protection: IP65
Temp Rating (°C): -40 to +60
Duty: continuous
Cable Entry: 2 x 20mm knock outs
Construction: Flame retardant ABS
Weight: 0.4Kg
Approval: EEx ia IIC T4
Certificate No: ANZEx (07. 4044X), IECEx (SIR 06. 0045X)

Unit may be powered by any certified zener barrier with output parameters not exceeding-Uo: 28VDC Io: 93mA Po: 0.66W



Order Code	Description
ESS0710AS	IS-MA1 sounder
ESS0730*AS	IS-MC1 sounder/beacon
MTL7728	MTL7728+ I/S barrier 28V

*Specify colour A = Amber, B = Blue, G = Green, R = Red



GNExS1/S2Tones continued

Stage 1	Description	Sound Output db@1m	Stage 2	Stage 3
Tone 19	1.4KHz-1.6KHz 1s, 1.6KHz-1.4KHz 0.5s - NFC48-265	114/126dB	Tone 2	Tone 5
Tone 20	660Hz Continuous	109/118dB	Tone 2	Tone 5
Tone 21	554Hz/440Hz @ 1Hz Alternating	109/118dB	Tone 2	Tone 5
Tone 22	544Hz @ 0.875 sec. Intermittent	109/118dB	Tone 2	Tone 5
Tone 23	800Hz @ 2Hz Intermittent	113/120dB	Tone 6	Tone 5
Tone 24	800/1000Hz @ 50Hz Sweeping	112/120dB	Tone 29	Tone 5
Tone 25	2400/2900Hz @ 50Hz Sweeping	116/124dB	Tone 29	Tone 5
Tone 26	Bell	108/118dB	Tone 2	Tone 15
Tone 27	554Hz Continuous	109/117dB	Tone 26	Tone 5
Tone 28	440Hz Continuous	106/117dB	Tone 2	Tone 5
Tone 29	800/1000Hz @ 7Hz Sweeping	112/121dB	Tone 7	Tone 5
Tone 30	300Hz Continuous	107/114dB	Tone 2	Tone 5
Tone 31	660/1200Hz @ 1Hz Sweeping	112/121dB	Tone 26	Tone 5
Tone 32	Two tone chime.	108/118dB	Tone 26	Tone 15
Tone 33	745Hz @ 1Hz Intermittent	109/116dB	Tone 2	Tone 5
Tone 34	1000 & 2000Hz @ 0.5 sec Alternating - Singapore	109/121dB	Tone 38	Tone 45
Tone 35	AS2220: 420Hz @ 0.625 sec Australian Alert	106/117dB	Tone 36	Tone 5
Tone 36	AS2220: 500-1200Hz 3.75sec /0.25sec. Australian Evac.	113/121dB	Tone 35	Tone 5
Tone 37	1000Hz Continuous - PFEER Toxic Gas	113/121dB	Tone 9	Tone 45
Tone 38	2000Hz Continuous	112/120dB	Tone 34	Tone 45
Tone 39	800Hz 0.25sec on, 1 sec off Intermittent	116/120dB	Tone 23	Tone 17
Tone 40	544Hz (100mS)/440Hz (400mS) - NF S 32-001	113/121dB	Tone 31	Tone 27
Tone 41	Motor Siren - slow rise to 1200 Hz	112/122dB	Tone 2	Tone 5
Tone 42	Motor Siren - slow rise to 800 Hz	114/121dB	Tone 2	Tone 5
Tone 43	1200 Hz Continuous	113/122dB	Tone 2	Tone 5
Tone 44	Motor Siren - slow rise to 2400 Hz	118/124dB	Tone 2	Tone 5
Tone 45	1KHz 1s on, 1s off Intermittent - PFEER Gen. Alarm	112/121dB	Tone 38	Tone 34

IS-A105N - IS-MA1 and IS-MC1Tones

Stage 1	Description	Stage 2	Stage 3
Tone 1	340 Hz Continuous	Tone 2	Tone 5
Tone 2	800/1000Hz @ 0.25 sec Alternating	Tone 17	Tone 5
Tone 3	500/1200Hz @ 0.3Hz 0.5 sec Slow Whoop	Tone 2	Tone 5
Tone 4	800/1000Hz @ 1Hz Sweeping	Tone 6	Tone 5
Tone 5	2400Hz Continuous	Tone 3	Tone 20
Tone 6	2400/2900Hz @ 7Hz Sweeping	Tone 7	Tone 5
Tone 7	2400/2900Hz @ 1Hz Sweeping	Tone 10	Tone 5
Tone 8	500/1200/500Hz @ 0.3Hz Sweeping	Tone 2	Tone 5
Tone 9	1200/500Hz @ 1Hz - DIN / PFEER P.T.A.P.	Tone 15	Tone 2
Tone 10	2400/2900Hz @ 2Hz Alternating	Tone 7	Tone 5
Tone 11	1000Hz @ 1Hz Intermittent	Tone 2	Tone 5
Tone 12	800/1000Hz @ 0.875Hz Alternating	Tone 4	Tone 5
Tone 13	2400Hz @ 1Hz Intermittent	Tone 15	Tone 5
Tone 14	800Hz 0.25sec on, 1 sec off Intermittent	Tone 4	Tone 5
Tone 15	800Hz Continuous	Tone 2	Tone 5
Tone 16	AS1670: 500-1200Hz Sweeping 2 sec on 1 sec off	Tone 18	Tone 5
Tone 17	544Hz (100mS)/440Hz (400mS) - NF S 32-001	Tone 2	Tone 27
Tone 18	AS1670: 1500-500Hz 0.5 sec on 0.5 sec off x 3 with 1.5 sec gap	Tone 16	Tone 5
Tone 19	1.4KHz-1.6KHz 1s, 1.6KHz-1.4KHz 0.5s -NFC48-265	Tone 2	Tone 5
Tone 20	660Hz Continuous	Tone 2	Tone 5
Tone 21	554Hz/440Hz @ 1Hz Alternating	Tone 2	Tone 5
Tone 22	544Hz @ 0.875 sec. Intermittent	Tone 2	Tone 5
Tone 23	800Hz @ 2Hz Intermittent	Tone 6	Tone 5
Tone 24	800/1000Hz @ 50Hz Sweeping	Tone 29	Tone 5

IS-A105N - IS-MA1 and IS-MC1Tones continued

Stage 1	Description	Stage 2	Stage 3
Tone 25	2400/2900Hz @ 50Hz Sweeping	Tone 29	Tone 5
Tone 26	Bell	Tone 2	Tone 15
Tone 27	554Hz Continuous	Tone 26	Tone 5
Tone 28	440Hz Continuous	Tone 2	Tone 5
Tone 29	800/1000Hz @ 7Hz Sweeping	Tone 7	Tone 5
Tone 30	300Hz Continuous	Tone 2	Tone 5
Tone 31	660/1200Hz @ 1Hz Sweeping	Tone 26	Tone 5
Tone 32	Two tone chime.	Tone 26	Tone 15
Tone 33	745Hz @ 1Hz Intermittent	Tone 2	Tone 5
Tone 34	1000 & 2000Hz @ 0.5 sec Alternating - Singapore	Tone 38	Tone 45
Tone 35	420Hz @ 0.625 sec Australian Alert	Tone 36	Tone 5
Tone 36	500-1200Hz 3.75sec /0.25sec. Australian Evac.	Tone 35	Tone 5
Tone 37	1000Hz Continuous - PFEER Toxic Gas	Tone 9	Tone 45
Tone 38	2000Hz Continuous	Tone 34	Tone 45
Tone 39	800Hz 0.25sec on, 1 sec off Intermittent	Tone 23	Tone 17
Tone 40	544Hz (100mS)/440Hz (400mS) - NF S 32-001	Tone 31	Tone 27
Tone 41	Motor Siren - slow rise to 1200 Hz	Tone 2	Tone 5
Tone 42	Motor Siren - slow rise to 800 Hz	Tone 2	Tone 5
Tone 43	1200 Hz Continuous	Tone 2	Tone 5
Tone 44	Motor Siren - slow rise to 2400 Hz	Tone 2	Tone 5
Tone 45	1KHz 1s on, 1s off Intermittent - PFEER Gen. Alarm	Tone 38	Tone 34
Tone 46	1200/500Hz @ 1Hz - DIN / PFEER P.T.A.P.	Tone 47	Tone 37
Tone 47	1KHz 1s on, 1s off Intermittent - PFEER Gen. Alarm	Tone 46	Tone 37
Tone 48	AS2220: 420Hz @ 0.625 sec Australian Alert	Tone 49	Tone 5
Tone 49	AS2220: 500-1200Hz 3.75sec /0.25sec. Australian Evac.	Tone 26	Tone 37