

Classic Convertibles

for an instant colour change



CLASSIC
C2000

clipsal.com

Smooth Curves and

Like a classic car, Clipsal's C2000 Classic Series of electrical accessories is a combination of beautiful design, refinement and reliable performance.

Unlike a classic car, however, the C2000 Classic Series is readily available and doesn't come with a high price tag.

With its premium blend of features and extensive choice of products, it's not surprising that the C2000 Classic Series has become one of the most sought after ranges of switches and sockets for homes and commercial premises, such as offices and hotels.

The finest quality parts

The first thing you'll notice about the C2000 Classic Series is the cover that comes in a choice of superb metal finishes and classic coloured plastic mouldings.

This cover not only looks attractive, it also hides all mounting holes, and is easily removed to enable you to paint right up to the edge of the gridplate without having to worry about marking the cover. When decorating is complete, the cover is simply replaced for a perfect finish.

As C2000 Classic Series covers and gridplates can be mixed and matched, you can produce many combinations to match the particular décor theme you want to create.

In fact, even after the C2000 Classic Series has been installed, you can change combinations as your décor changes.



A choice of models

The C2000 Classic Series comes in an outstanding range of models to create a classic look in every room.

Painting Shields

Snap on painting shields for grid plates are also available (C2000PP). These paint shields provide total protection of the gridplate when painting with a brush, roller or spray-gun.



Sleek Lines

Switches

A wide choice of C2000 Classic switches is available for homes and commercial premises, including one to six gang standard wall switches and one to four gang architrave switches.

A 45A cooking appliance isolating switch is also available in the C2000 Classic Series. Installed a safe distance from electric

hotplates, it enables power to the hotplates to be completely shut off in the event of an emergency such as oil catching fire.

Access to Card Switches as well as EMC Compliant Dimmers and Fan Controllers are also included in the range.

Sockets

With so much electrical equipment in our homes and offices, it's good to know that the C2000 Classic Series has all your requirements covered with a comprehensive range of sockets.

10A and 15A single and twin switched sockets in horizontal and vertical configurations provide a number of options including neons, safety shutters, and single and double pole.

20A single horizontal switched sockets have been added to the range to provide power to air conditioners, stoves etc.

For added peace of mind, twin switched sockets are available with built-in RCD protection.

Four switched sockets help make life even easier in the home and office - you'll soon wonder how you ever managed without them.

A universal shaver outlet has also been included in the C2000 Classic Series for locations such as hotels, conference centres and airports.

Data and Communication

Telephones, fax machines and the internet are an everyday part of life, not just in the office, but in the home too. To help you with your data transmission requirements, Clipsal offers the universal RJ45 voice and data and BT 2 wire sockets in the C2000 Classic Series.



Having a home entertainment system has usually meant putting up with metres of messy audio cables. But not anymore. The C2000 Classic Series includes an audio wallplate that provides a neat connection point for the audio cables of televisions, VCRs and sound systems via easily identified red and black RCA sockets.



The Attraction of Metal

The C2000 Classic Series consists of seven superb metal cover finishes. All simply clip onto the grid plates while the stainless steel and brass covers are also available in screw fixed formats for greater security in commercial areas.

*Metal Finishes**

-  Gold (GD)
-  Brushed Brass (BB)
-  Brushed Aluminium (BA)
-  Chrome (CH)
-  Gunmetal (GM)
-  Brass (BS)
-  Stainless Steel (SS)

The Merits of Metal

The following pre-assembled models have been carefully selected by our designers to add a sense of style to any décor.

Metal Plate Assemblies

-  Brushed Brass Covers with Brown Grid Plates (BB)
-  Brushed Aluminium Covers with Soft Grey Grid Plates (BA)
-  Chrome Covers with Soft Grey Grid Plates (CH)
-  Gunmetal Covers with Black Grid Plates (GM)
-  Brass Covers with Brown Grid Plates (BS)
-  Stainless Steel Covers with Soft Grey Grid Plates (SS)
-  Gold Covers with Cream Grid Plates (GD)

*** Note:** Quad power points (C2015D4 Series) are available in the metal finishes of Arctic Silver (3A) and Chrome Shadow (3S). Refer page 7.



Smooth Operators

A range of C2000 Classic Series plastic moulded covers provides even greater flexibility when planning your interior colours.

These high gloss covers have an easy-clean finish and are available in the most popular decorator colours.

Moulded Plastic Finishes

- White Electric (WE)
- Cream (CM)
- Soft Grey (SG)
- Desert Sand (DS)
- Black (BK)
- Brown (BR)



Classic C-Bus

Clipsal C-Bus is a fully programmable Building Control and Energy Management System that can integrate the lighting and power needs of a building with its climate control, security and safety services. System control is from individually located stations or a personal computer.

Now available are C2000 Classic Series switches for the C-Bus Building Control and Management system. These switches can be customised before or after installation via instructions over the C-Bus Network.



Personalised Plates

Just as many car owners like to have their own personalised plates, C2000 Classic Series products are available with labelling windows so that switches and circuits can be instantly identified.

The clear window simply clips into the grid and the label is inserted. A specially pierced cover is then clipped on to give you an easy to read label. These products are available fully assembled or as an ID Cover Kit comprising the relevant pierced cover, the necessary transparent windows, and some commonly used labels. Simply add 'I' to the standard catalogue number.



1. Attach window

2. Insert label

3. Fit cover

4. Finished product

Double Pole for Safety & Performance

Clipsal's highly popular C2000 Series of switches and sockets are now available in a Double Pole Range. Ideal for use in caravans, marine craft, motor homes, transportable buildings, etc. Anywhere installation safety is paramount, the double pole range is a great addition to the accessory offering.

Features and Benefits

- Added safety
- Interchangeable covers – mix and match combinations to create your own theme
- neon options available (eg. C2025DN)
- shutter options (eg. C2025DS)
- 10A and 15A versions
- made from impact resistant ABS
- standard metal decorative covers in all C2000 colours.



Available in the range:

- C2025D - 10 amp, double switched socket, double pole
- C2025DS - 10 amp, double switched socket, double pole with shutters
- C2025D15 - 15 amp, double switched socket, double pole
- C2025DN - 10 amp, double switched socket, double pole, with neons
- C2025DC - Cover only to suit all C2025D Series
- C2015D - 10 amp, single switched socket, double pole.

Quad Sockets with style

Clipsal is the first company in Australia to offer practical four switched power sockets in great new metal look finishes. Our famous 'awesome foursome' switched sockets now come in Arctic Silver and Chrome Shadow finishes which blend in seamlessly with modern or architectural settings.

Cool colours and features include:

- fingerprint, chemical, UV and corrosion resistant
- Arctic Silver complements existing Slimline/Eclipse and Classic 'Brushed Aluminum'
- Chrome Shadow complements existing Slimline and Eclipse 'Chrome Shadow'
- double pole 10A, 250V a.c.
(suitable for caravans and marine craft).

Awesome models and accessories:

- C2015D4,3A - Arctic Silver Quad Switched Socket
- C2015D4,3S - Chrome Shadow Quad Switched Socket
- C2015D4C,3A - Arctic Silver C2015D4 Cover
- C2015D4C,3S - Chrome Shadow C2015D4 Cover.



Photo courtesy of Harvey Norman Renovations

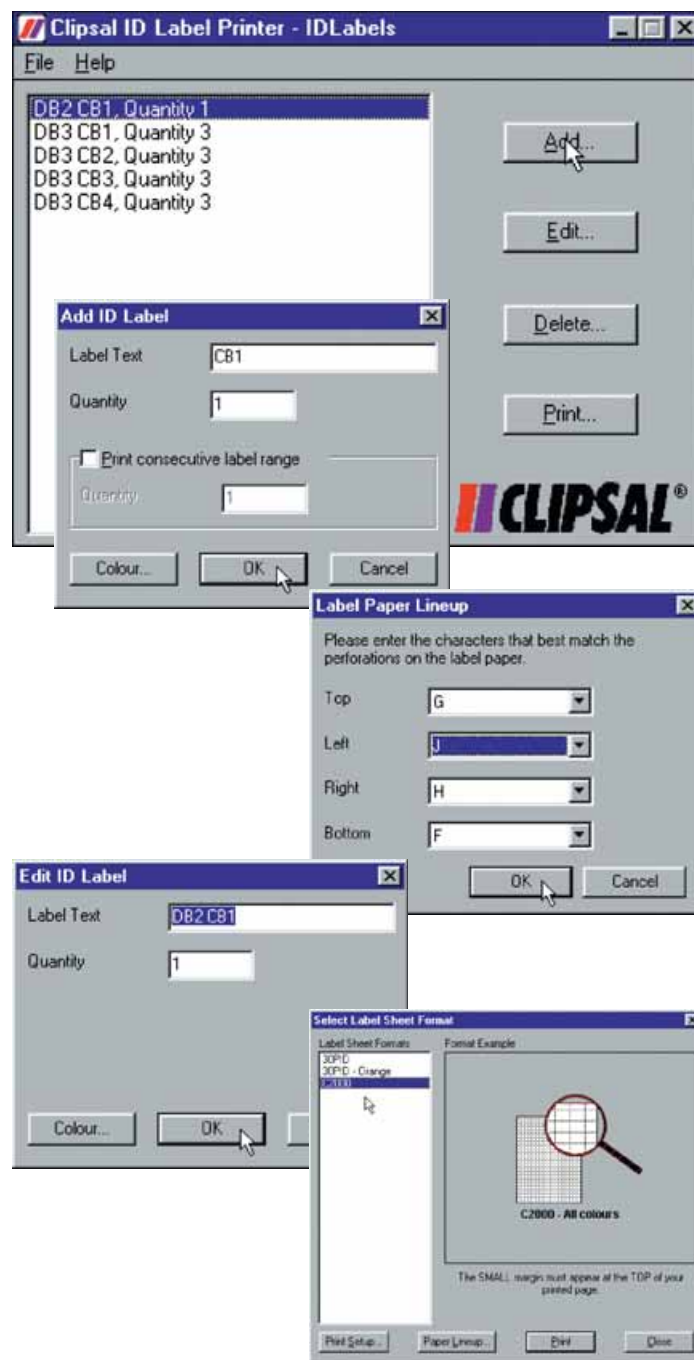
Custom Label Software Program

The labels supplied with the ID Cover kit have been chosen to suit a number of everyday applications, but circuit identification for major projects can be far more complex, often requiring hundreds of labels in many sequences.

While Clipsal has been printing label sheets for large projects as a service to our customers, the complexity of the requirements, and the inevitable time delays involved, mean that it is quicker and easier for contractors to do their own labels, and that's where Clipsal's Custom Label Printer Software Program is ideal.

Available free as part of the Alfred Trade Product Guide CD-ROM, the Clipsal Label Printer is a Windows™ based custom software package that uses a very simple data entry form, and allows for multiples of each label and multiples of consecutive labels. Text colour selection is also available, depending on the suitability of the printer.

The program includes a test page and setting adjustment facility which allows for different brands of printers.



The Clipsal Label Printer ensures perfect labels every time when printing on C2000 label sheets. These sheets are available in packs containing 10 pages with over 400 labels per page. For further flexibility, there is a choice of both adhesive (SC2000A4L) or non-adhesive versions (C2000A4L).

While the Clipsal label printer was designed for the C2000 Classic Series labelling system, it can also be used for 30PID labels.

C2000 Classic Products



C2030



C2031VA



C2033VA



C2015



C2015D4



C2015N



C2016/2

Flush Switches

Cat. Number	Description
C2030	250V 10A Single Architrave Switch
C2031HA	250V 10A Single Horizontal Switch
C2031VA	250V 10A Single Vertical Switch
C2031VA16T	250V 16A Single Vertical Switch with Connector
C2032A	250V 10A Twin Architrave Switch
C3032HA	250V 10A Twin Horizontal Switch
C2032VA	250V 10A Twin Vertical Switch
C2032VA16	250V 16A Twin Vertical Switch
C2032VTB	Permanent Connection Unit
C2033A	250V 10A Triple Architrave Switch
C2033HA	250V 10A Three Gang Horizontal Switch
C2033VA	250V 10A Three Gang Vertical Switch
C2033VA16	250V 16A Three Gang Vertical Switch
C2034A	250V 10A Four Gang Architrave Switch
C2034HA	250V 10A Four Gang Horizontal Switch
C2034VA	250V 10A Four Gang Vertical Switch
C2035HA	250V 10A Five Gang Horizontal Switch
C2035VA	250V 10A Five Gang Vertical Switch
C2036HA	250V 10A Six Gang Horizontal Switch
C2036VA	250V 10A Six Gang Vertical Switch

Switched Sockets

Cat. Number	Description
C2015	250V 10A Single Switched Socket
C2015D	250V 10A Double Pole Switched Socket
C2015DX	250V 10A Single Double Pole Switched Socket with Extra Switch
C2015D4	250V 10A Four Gang Double Pole Switched Socket
C2015D4,3A	250V 10A Four Gang Double Pole Switched Socket, Arctic Silver
C2015D4,3S	250V 10A Four Gang Double Pole Switched Socket, Chrome Shadow
C2015D4N	250V 10A Four Gang Double Pole Switched Socket with Neon
C2015D4S	250V 10A Four Gang Double Pole Switched Socket with Safety Shutters
C2015L	250V 10A Single Switched Socket with Round Earth Pin
C2015LN	250V 10A Single Switched Socket with Round Earth Pin and Neon
C2015N	250V 10A Single Switched Socket with Neon
C2015S	250V 10A Single Switched Socket with Safety Shutter
C2015V	250V 10A Single Vertical Switched Socket with Safety Shutter
C2015VD	250V 10A Single Vertical Double Pole Switched Socket with Safety Shutter
C2015VL	250V 10A Single Vertical Switched Socket with Round Earth Pin
C2015V15	250V 15A Single Vertical Switched Socket with Safety Shutter
C2015VN	250V 10A Single Vertical Switched Socket with Neon
C2015VXA	250V 10A Single Vertical Switched Socket with Safety Shutters and Extra Removable Switch
C2015VXN	250V 10A Single Vertical Switched Socket with Neon and Extra Switch
C2015X	250V 10A Single Switched Socket with Extra Switch
C2015XX	250V 10A Single Switched Socket with 2 Extra Switches
C2015/15X	250V 15A Single Switched Socket with Extra Switch
C2015XN	250V 10A Single Switched Socket with Neon and Extra Switch
C2015XS	250V 10A Single Switched Socket with Extra Switch and Safety Shutter
C2015/2VD	250V 10A Twin Vertical Double Pole Switched Socket
C2015/15	250V 15A Single Switched Socket
C2015/15N	250V 15A Single Switched Socket with Neon
C2015/20	250V 20A Single Switched Socket
C2016/2	250V 10A Twin Switched Skirting Socket
C2016/2D	250V 10A Twin Double Pole Skirting Switched Socket

To order products with ID Cover Kit, add 'I' to Catalogue Numbers. e.g. C2025VXA becomes C2025VXAI

Note: all switched sockets with Neons include safety shutters.



C2025



C2025SF



C2025V



C2025XA



C2031/45



C2033CC1X



C2032E450L

C2016/2N	250V 10A Twin Skirting Switched Socket with Neon
C2016/2S	250V 10A Twin Skirting Switched Socket with Safety Shutters
C2025	250V 10A Twin Switched Socket
C2025D	250V 10A Twin Switched Socket, Double Pole
C2025DN	250V 10A Twin Switched Socket, Double Pole with Neon
C2025DS	250V 10A Twin Switched Socket, Double Pole with Shutters
C2025D15	250V 15A Twin Switched Socket, Double Pole
C2025L	250V 10A Twin Switched Socket with Round Earth Pin
C2025N	250V 10A Twin Switched Socket with Neon
C2025QC	250V 10A Twin Switched Socket - Quick Connect Terminals
C2025RC	230/250V 10A Twin Switched Socket with Inbuilt 20A (30mA) RCD. d.c. pulse sensitive.
C2025RC10	230/250V 10A Twin Switched Socket with Inbuilt (10mA) RCD. d.c. pulse sensitive.
C2025S	250V 10A Twin Switched Socket with Safety Shutters
C2025SF	250V 10A Twin Switched Socket with Surge Filter
C2025V	250V 10A Twin Vertical Switched Socket
C2025VN	250V 10A Twin Vertical Switched Socket with Neon
C2025VXA	250V 10A Twin Vertical Switched Socket with Safety Shutters and Extra Switch
C2025VXN	250V 10A Twin Vertical Switched Socket with Neon and Extra Switch
C2025V15	250V 15A Twin Vertical Switched Socket with Safety Shutters
C2025V15N	250V 15A Twin Vertical Switched Socket with Safety Shutters and Neon
C2025XA	250V 10A Twin Switched Socket with Extra Switch
C2025XAN	250V 10A Twin Switched Socket with Neon and Extra Switch
C2025XAS	250V 10A Twin Switched Socket with Safety Shutters and Extra Switch
C2727	240/110V 22VA Universal Shaver Outlet

Special Purpose Switches

Cooking Appliance Isolators

Cat. Number	Description
C2031/45	250V 45A Single Pole Cooking Appliance Isolator
C2031/45N	250V 45A Single Pole Cooking Appliance Isolator with Neon
C2031D40	500V 40A Double Pole Cooking Appliance Isolator
C2031D40N	500V 40A Double Pole Cooking Appliance Isolator with Neon

Access Card Switches

Cat. Number	Description
C2033CC1	250V 16A Access Card Switch with One Mechanism
C2033CC1X	250V 16A Access Card Switch with One Mechanism and extra switch
C2033CC1N	250V 16A Access Card Switch with One Mechanism and Neon
C2033CC1NX	250V 16A Access Card Switch with One Mechanism, Neon and Extra Switch
C2033CC2	250V 16A Access Card Switch with Two Mechanisms
C2033CC2X	250V 16A Access Card Switch with Two Mechanisms and Extra Switch

Fan Speed Controller

Cat. Number	Description
C2032E500F	250V 500W Fan Controller

Light Dimmers

Cat. Number	Description
C2032E450L	250V 450W Leading Edge Light Dimmer (for incandescent or low voltage lights using iron core transformers)
C2032E450T	250V 450W Trailing Edge Light Dimmer (for incandescent or low voltage lights using electronic transformers)

Telephone Outlet

Cat. Number	Description
C2031VTO	Telephone Outlet Plate to suit Telstra 610 socket

To order products with ID Cover Kit, add 'I' to Catalogue Numbers. e.g. C2025VXA becomes C2025VXAI

Note: all switched sockets with Neons include safety shutters.



C2031VTV75



C2032SPK



C2031HRJA5S



C2031V66



C5032NL



C2015XNC

Antenna Socket

Cat. Number	Description
C2031VTV75	75 ohm TV Socket
C2031VTV75F	75 ohm TV Socket, F-type to PAL

Audio Wallplates

Cat. Number	Description
C2032SPK	Audio Wallplate, RCA type

Voice and Data

Cat. Number	Description
C2031VT2W	Single BT 2 Wire Plate and Socket Assembly (Suitable for NZ only)
C2032VT2W	Twin BT 2 Wire Plate and Socket Assembly (Suitable for NZ only)
C2031HRJA5S	Horizontal Flexiport Grid fitted with one Cat5e shuttered Socket
C2031HRJA6S	Horizontal Flexiport Grid fitted with one Cat6 shuttered Socket
C2032HRJA5S	Horizontal Flexiport Grid fitted with two Cat5e shuttered Sockets
C2032HRJA6S	Horizontal Flexiport Grid fitted with two Cat6 shuttered Sockets

All Clipsal Data products comply with Australian and New Zealand Standards AS/NZ 3080-96.

IP66 Switches

Cat. Number	Description
C2031V66	250V, 20A/10AX, 1 gang, vertical mount
C2031H66	250V, 20A/10AX, 1 gang, horizontal mount
C2032V66	250V, 20A/10AX, 2 gang, vertical mount
C2032H66	250V, 20A/10AX, 2 gang, horizontal mount

C-Bus Key Input Units

Cat. Number	Description
C5031NL	One Gang Key Input, Learn Enabled
C5032NL	Two Gang Key Input, Learn Enabled
C5034NL	Four Gang Key Input, Learn Enabled

C2000 Classic Custom Build

Note: C2015V, C2015V15, C2015VXA, C2025V, C2025V15 and C2025VXA have been redesigned. New design covers will only adapt to the new design switches and old design covers adapt to the old design switches. New design covers can be identified by the 10A or 15A marking alongside the earth socket, whereas old design has Amperage on the switch mechanism.

Covers only

Cat. Number	Description
C2001C	Cover for Single Architrave Switch
C2002C	Cover for Twin Architrave Switch
C2003C	Cover for Triple Architrave Switch
C2004C	Cover for Four Gang Architrave Switch
C2015C	Cover for Single Switched Socket
C2015D4C	Cover for Quad Switched Socket
C2015D4C, 3A	Cover for Quad Switched Socket, Arctic Silver
C2015D4C, 3S	Cover for Quad Switched Socket, Chrome Shadow
C2015D4NC	Cover for Four Gang Outlet with Neons
C2015/20C	Cover for Single Switched Socket 20A
C2015NC	Cover for Single Switched Socket with Neon
C2015XNC	Cover for Single Switched Socket with Extra Switch and Neon
C2015VC	Cover for Single Vertical Switched Socket (old design)
C2015VC2	Cover for Single Vertical Switched Socket (new design)
C2015VNC	Cover for Single Vertical Switched Socket with Neon
C2025VXC	Cover for Single Vertical Switched Socket with Extra Switch (old design)
C2025VXC2	Cover for Single Vertical Switched Socket with Extra Switch (new design)
C2015VXNC	Cover for Single Vertical Switched Socket with Extra Switch and Neon

To order products with ID Cover Kit, add 'I' to Catalogue Numbers. e.g. C2025VXA becomes C2025VXAI



C2015XC	Cover for Single Switched Socket with Extra Switch
C2015XXC	Cover for Single Switched Socket with 2 Extra Switches
C2016/2C	Cover for Twin Switched Socket for Skirtings
C2025C	Cover for Twin Switched Socket
C2025DC	Cover for Twin Switched Socket (double pole version)
C2025NC	Cover for Twin Switched Socket with Neon
C2025QCC	Cover for Twin Switched Socket - Quick Connect
C2025VC	Cover for Twin Vertical Switched Socket (old design)
C2025VC2	Cover for Twin Vertical Switched Socket (new design)
C2015VNC	Cover for Twin Vertical Switched Socket with Neon
C2025VXC	Cover for Twin Vertical Switched Socket with Extra Switch (old design)
C2025VXC2	Cover for Twin Vertical Switched Socket with Extra Switch (new design)
C2025VXNC	Cover for Twin Vertical Switched Socket with Extra Switch and Neon
C2025XC	Cover for Twin Switched Socket with Extra Switch
C2025XNC	Cover for Twin Switched Socket with Extra Switch and Neon
C2031C	Cover with Single Aperture
C2031VTOC	Cover for Telephone Plate
C2031VXC	Blank Cover
C2032C	Cover with Two Apertures
C2033C	Cover with Three Apertures
C2034C	Cover with Four Apertures
C2035C	Cover with Five Apertures
C2036C	Cover with Six Apertures
C2031V66IC	Cover, ID Labels and Window for C2031V66
C2031H66IC	Cover, ID Labels and Window for C2031H66
C2032V66IC	Cover, ID Labels and Window for C2032V66
C2032H66IC	Cover, ID Labels and Window for C2032H66

Unassembled Grids and Covers

Cat. Number	Description
C2015XUA	Single Switched Socket with Aperture for Extra Switch
C2025XUA	Twin Switched Socket with Aperture for Extra Switch
C2031	One Gang Architrave Grid and Cover
C2032	Two Gang Architrave Grid and Cover
C2033	Three Gang Architrave Grid and Cover
C2034	Four Gang Architrave Grid and Cover
C2031VH	Single Aperture Grid and Cover
C2031VX	Blank Grid and Cover Assembly
C2032VH	Two Aperture Grid and Cover
C2033VH	Three Aperture Grid and Cover
C2034VH	Four Aperture Grid and Cover
C2035VH	Five Aperture Grid and Cover
C2036VH	Six Aperture Grid and Cover

 The shape of the switch dolly is a trade mark of Clipsal Australia Pty Ltd

Product of Clipsal Australia Pty Ltd
A member of the Schneider Electric Group

Head Office
12 Park Terrace, Bowden
South Australia 5007
Telephone (08) 8269 0511
Facsimile (08) 8340 1724
Internet clipsal.com
E-Mail plugin@clipsal.com.au

National Customer Service Enquiries:
1300 2025 25

National Customer Service Facsimile:
1300 2025 56

International Enquiries
International Sales and Marketing
Telephone + 61 8 8269 0587
Facsimile + 61 8 8340 7350
E-Mail export@clipsal.com.au

New Zealand
Clipsal Industries (NZ) Ltd
Telephone (09) 576 3403
Facsimile (09) 576 1015
E-Mail headoffice@clipsal.co.nz

Customer Service
Free Fax (0508) 250 305
Auckland/Mobile Phone (09) 572 0014
Free Phone (0508) CLIPSAL
2 5 4 7 7 2 5

You can find this brochure and many others online in PDF format at: **clipsal.com**
Follow the links off the home page or access the following page directly:
clipsal.com/wat_lib_pdf.cfm

clipsal.com

Clipsal Australia Pty Ltd reserves the right to change specifications, modify designs and discontinue items without incurring obligation and whilst every effort is made to ensure that descriptions, specifications and other information in this catalogue are correct, no warranty is given in respect thereof and the company shall not be liable for any error therein.