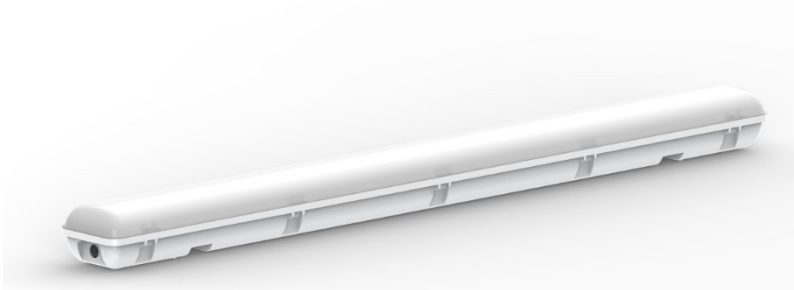


## CLEVERTRONICS ECONOMY ARGONAUT QUANTUM LED WEATHERPROOF BATTEN WITH MICROWAVE SENSOR & SWITCHABLE COLOUR



### PRODUCT INFORMATION

Part Number	ARGO-1200-EM-SEN
MIC	AUB03520110001
Description	Economy Argonaut Quantum 1200mm Weatherproof Emergency Batten with Microwave Sensor (Hi/Lo) and Switchable Colour
Construction	Polycarbonate Base, Polycarbonate Diffuser and Captive Stainless Steel Clips (SS301)
Mounting	Surface mount
Dimensions L x W x H	1265mm x 88mm x 121mm
Weight	2.7 kg
Operating Mode	Sustained
Testing System	N/A - Manual test switch
Battery	Lithium Iron Phosphate, 3.2V 3000mAh
Charging Method	Intelligent current limited constant voltage
Diffuser	Polycarbonate
Driver / Ballast	LED Driver – Merytek MLC65C
Lamp(s)	Dual LED strip module, 3,000K warm white, 5,700K cool white, 50,000h life [L70/B50 Ta 40°C], Ra>80
Operating Voltage	240V AC; 50Hz
Power Factor	0.85
Supply Current	190mA +/- 20mA
Total lumen output	see table on page 2
Power Consumption	see table on page 2
IP Rating	IP65
Operating Temperature	0°C to 40°C
AS2293 Classification	C <sub>0</sub> =D40 C <sub>90</sub> =D25
Impact Rating	IK08
Alternate Part Number	A4WB-MS-HL

### REPLACEMENT PARTS

PART NUMBER	DESCRIPTION
1560150	BATT:LiFePO4 3.2V 3.0Ah 70mm lead,noBRKT
ELIFE-X-LI-CKIT-2LED-SL-NP	Lifelight, Control Only,2LED,3.0Ah,325mA
1330079	LED HL Driver - MLC65C-P8

*The product details described in this document are current as at the version date of the document. We reserve the right to change product design, specifications or materials (Specifications) as part of our continuous improvement program. Please confirm the applicable Specifications at the time of placing your order*

Power consumption at 650mA setting:

Colour	MAX Charge Lamp ON	Standby Lamp ON	Standby Lamp MIN (10%)	Standby Lamp OFF
3000K	38 W	37 W	6.1 W	0.4W
4000K	36 W	34 W	6.1 W	0.4W
5700K	37 W	36 W	6.2 W	0.4W

Lumen Output at 650mA setting:

Colour	Lumen Output
3000K	3684 lm
4000K	4060 lm
5700K	3732 lm