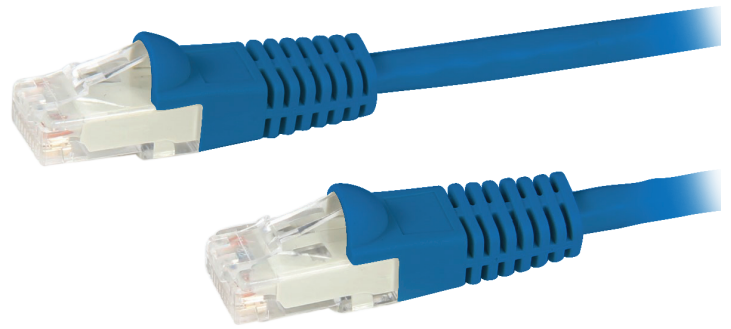


CAT6 UTP PATCH LEADS - 250MHZ

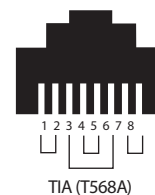
The Cat6 UTP patch leads conform to the TIA/ EIA-568-B specification. Patch leads are wired to the T568A pinout specification. They are individually channel tested and are made with tangle free slimline injection molded boots in various colours and lengths.



FEATURES:

- Produced by an ISO9001 and ISO14001 certified manufacturer
- 100% tested and channel certified by 3P, UL and ETL
- Available in 10 colours
- Covered by lifetime warranty

T568A Cabling Pinout Specifications



PRODUCT CODES

LENGTH	BLACK	BLUE	GREEN	GREY	ORANGE	RED	YELLOW	PURPLE	WHITE
0.3M	NPLC6BK0.3	NPLC6BL0.3	NPLC6GN0.3	NPLC6GY0.3	NPLC6OR0.3	NPLC6RD0.3	NPLC6YL0.3	NPLC6PP0.3	NPLC6WH0.3
0.5M	NPLC6BK0.5	NPLC6BL0.5	NPLC6GN0.5	NPLC6GY0.5	NPLC6OR0.5	NPLC6RD0.5	NPLC6YL0.5	NPLC6PP0.5	NPLC6WH0.5
1M	NPLC6BK1	NPLC6BL1	NPLC6GN1	NPLC6GY1	NPLC6OR1	NPLC6RD1	NPLC6YL1	NPLC6PP1	NPLC6WH1
1.5M	NPLC6BK1.5	NPLC6BL1.5	NPLC6GN1.5	NPLC6GY1.5	NPLC6OR1.5	NPLC6RD1.5	NPLC6YL1.5	NPLC6PP1.5	NPLC6WH1.5
2M	NPLC6BK2	NPLC6BL2	NPLC6GN2	NPLC6GY2	NPLC6OR2	NPLC6RD2	NPLC6YL2	NPLC6PP2	NPLC6WH2
3M	NPLC6BK3	NPLC6BL3	NPLC6GN3	NPLC6GY3	NPLC6OR3	NPLC6RD3	NPLC6YL3	NPLC6PP3	NPLC6WH3
5M	NPLC6BK5	NPLC6BL5	NPLC6GN5	NPLC6GY5	NPLC6OR5	NPLC6RD5	NPLC6YL5	NPLC6PP5	NPLC6WH5
10M	NPLC6BK10	NPLC6BL10	NPLC6GN10	NPLC6GY10	NPLC6OR10	NPLC6RD10	NPLC6YL10	NPLC6PP10	NPLC6WH10
15M	NPLC6BK15	NPLC6BL15							
20M	NPLC6BK20	NPLC6BL20							
30M		NPLC6BL30							