

Metal Glands - EMC IP68

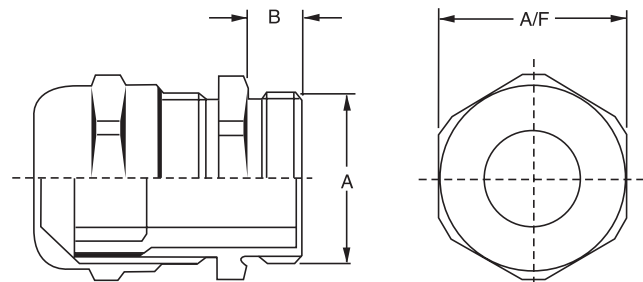
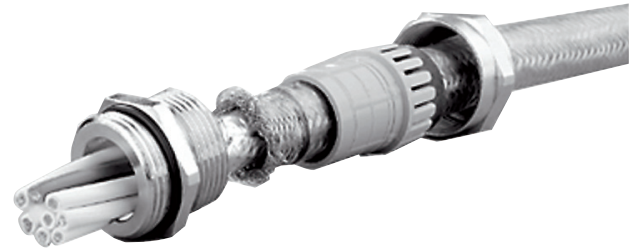
Electro Magnetic Compatibility (EMC) refers to the ability of an electrical or electronic device or system to function satisfactorily in its electro magnetic environment, without introducing intolerable electro magnetic interference (EMI) to anything in that environment. EMC encompasses controls of both unintentional emissions from a range of products that can interfere with radio communications, as well as protection of a range of devices that may be susceptible to intentional transmissions.

In 1999 new regulations became effective to control EMI. This has necessitated the introduction of EMC cable, and to effectively terminate these cables, an EMC cable gland is required.

CABAC's EMC gland is similar to the popular GU range of glands, and is available in sizes from 12mm through to 63mm metric threads.

- IP68 rating - the highest possible
- Superior strain relief
- Larger cable range with each gland
- Nickel-plated brass for corrosion protection
- Unique "camera shutter" principal which gives IP68 sealing

Installation - to ensure compatibility the gland must be terminated into a metal enclosure or terminal box. The shielding of the cable should be stripped back to the point where the gland enters the enclosure. The gland is passed over the cable and the shielding terminated into the bottom of the gland. The gland is then screwed together and connected to the enclosure.



Catalogue No.	Mounting A Dia. (mm)	Thread B Length (mm)	Min. Cable Range (mm)	Max. Cable Range (mm)	Width A/F (mm)	Std Pack
Long Thread						
GU12EMC/L	12	10	3	6	14	40
GU16EMC/L	16	10	5	9	17	20
GU20EMC/L	20	10	8	13	22	20
GU25EMC/L	25	11	11	17	27	10
GU32EMC/L	32	13	15	21	34	5
GU40EMC/L	40	13	19	28	43	3
GU50EMC/L	50	14	26	35	55	1
GU63EMC/L	63	14	32	42	65	1

Note: These glands are **NOT** supplied with locknuts, see EMC Locknuts below to order.

EMC Locknuts

These EMC locknuts have sharp "barbs" to cut an earthing path into the metal enclosure, through paint or most surface coverings.

Catalogue No.	To Suit	Thread
LNM12EMC	GU12EMC/L	M12
LNM16EMC	GU16EMC/L	M16
LNM20EMC	GU20EMC/L	M20
LNM25EMC	GU25EMC/L	M25
LNM32EMC	GU32EMC/L	M32
LNM40EMC	GU40EMC/L	M40
LNM50EMC	GU50EMC/L	M50
LNM63EMC	GU63EMC/L	M63

