

Metal Glands - Armoured Cables IP66

GENERAL PURPOSE

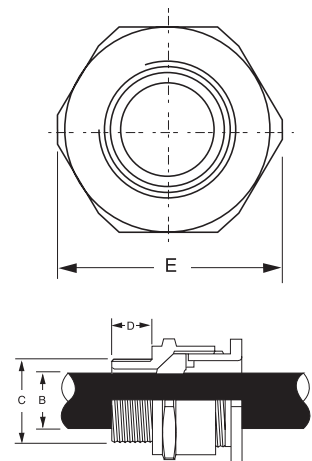
CABAC's CW range of Armoured Cable Glands are designed for general purpose use with steel wire armoured cables. They have an IP66 seal to the outer jacket of the cable and are suitable for weatherproof applications.

- CABAC glands have a unique wedge seal which causes the seal to deflect inwards much quicker and easier than conventional glands
- Each gland covers a large cable range because of the unique seal, which simplifies gland selection, and reduces inventories
- Easy and fast to install
- Conform to BS6121:Part 1:1989
- They are nickel plated for superior corrosion protection
- Suitable for armoured PVC and XLPE insulated armoured cables

Select the gland required using the over and under armour dimensions, in the table below. This data can be found in the cable manufacturers technical books, or by measuring the cable. To install simply follow normal gland installation practices.

Cat.No.	Mounting Thread		Cable Dimensions Accommodated (mm)					Dim Across Cnrs (mm) E	Shroud No. for Gland	Std Box Qty
	Dia (mm) C	Length (mm) D	Under Armour Dia. A		Overall Dia. B		Armour Wire Dia.			
			Min	Max	Min	Max				
CW20/16	20	15	-	8.6	8.0	13.4	0.9	24.5	1	20
CW20S	20	10	-	11.6	11.4	15.9	0.9/1.25	26.5	1	20
CW20	20	10	-	13.9	15.0	20.9	0.9/1.25	33.0	2	20
CW25	25	10	-	19.9	20.3	27.4	1.25/1.6	39.9	3	10
CW32	32	15	-	26.2	26.0	33.9	1.6/2.0	46.0	4	5
CW40	40	15	-	32.1	31.0	40.4	1.6/2.0	55.3	5	3
CW50S	50	15	-	38.1	36.5	46.7	2.0/2.5	61.3	6	2
CW50	50	15	-	44.0	43.0	53.1	2.0/2.5	66.8	7	2
CW63S	63	15	-	50.0	48.9	59.4	2.5	77.5	7	1
CW63	63	15	-	55.9	58.0	65.9	2.5	83.2	7	1

Note: These glands are **NOT** supplied with locknuts, see page F11 should you require.



Gland Selection Chart

For 0.6/1kV Armoured PVC Cables with Circular Copper Conductors

Cable	2 Core & Earth	3 Core & Earth	3½ Core & Earth	4 Core & Earth
1.5	CW20S	CW20		CW20
2.5	CW20	CW20		CW20
4	CW20	CW20		CW20
6	CW20	CW25		CW25
10	CW25	CW25		CW25
16	CW25	CW25		CW32
25	CW32	CW32		CW32
35		CW32		CW40
50		CW40	CW50S	CW50S
70		CW50S	CW50S	CW50
95		CW50S	CW50	CW63S
120		CW50	CW63S	CW63S
150		CW63S	CW63S	CW63
185		CW63S	CW63	

Technical Data

Material

Body Brass
Seal Neoprene rubber
Finish Nickel plated

Conformant Standard

BS6121

IP Rating

IP66

Note: This chart should be used as a guide only. Cable dimensions vary by manufacturer and insulation type.