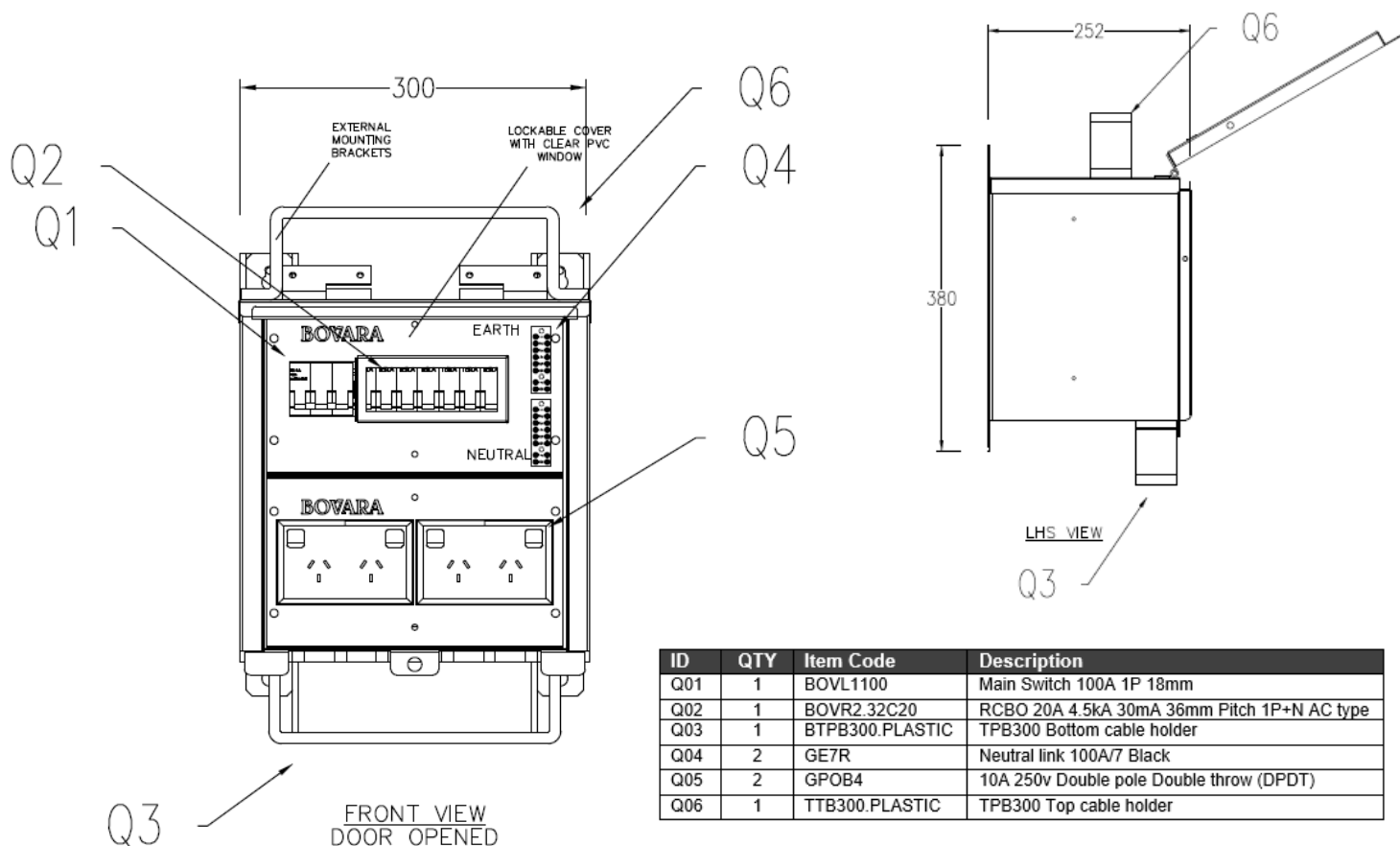


Product Datasheet

TPB300.4



- IP44 Enclosure
- Fully wired and labelled
- Orange X15 powder coated
- Strong collapsible stand, battery tray, top lead suspension, insulated tie rod, bottom cable management bar included
- 12mm diameter padlockable hole
- Flat-packed for easy installation, transportation, and storage
- Door stay
- Phases: 1
- Double GPO 10 Amp: 2



| ID | QTY | Item Code | Description |
|-----|-----|-----------------|---|
| Q01 | 1 | BOVL1100 | Main Switch 100A 1P 18mm |
| Q02 | 1 | BOVR2.32C20 | RCBO 20A 4.5kA 30mA 36mm Pitch 1P+N AC type |
| Q03 | 1 | BTPB300.PLASTIC | TPB300 Bottom cable holder |
| Q04 | 2 | GE7R | Neutral link 100A/7 Black |
| Q05 | 2 | GPOB4 | 10A 250v Double pole Double throw (DPDT) |
| Q06 | 1 | TTB300.PLASTIC | TPB300 Top cable holder |

Product Datasheet

TPB300.4

Specifications

| | |
|--|---|
| Category | Onsite Power |
| SubCategory | Temporary Power Boards |
| Item Code | TPB300.4 |
| IP Rating | IP44 |
| Dimensions (H x W x D) | 1760 x 300 x 250mm (including stand height) |
| Weight | ~18kg |
| Nominal Operational Voltage, AC | 240VAC |
| Poles (18mm), Total | 9 |
| Poles (18mm), Remaining | 4 |
| Cable Entry | Bottom |
| RCBO Poles | 1P + N (switched) |
| Rated Frequency | 50Hz |
| In, Rated Current | 20A |
| I Δ n, Rated Leakage Current | 30mA Type A |
| Inc, Rated Breaking Capacity | 4.5kA |
| I Δ m, Rated Residual Breaking Capacity | 100A |
| Wire / Conductor Size, Top, Max | 35mm ² Tunnel Terminal |
| No. of 10A Socket Outlets | 2 (Double GPO) |
| Compliance | AS/NZS 3000:2018 AS/NZS 61439 AS/NZS 61009 AS/NZS 3012 |