

# STUDBITE®

PATENT PENDING

## The fast & efficient Trapeze system

- ✓ Reduces on-site labour costs
- ✓ Compatible with M8 and M10 stud
- ✓ Designed to work with (not replace) tried and trusted industry-standard products



  
**Alpha**®  
SUPPORT SYSTEMS

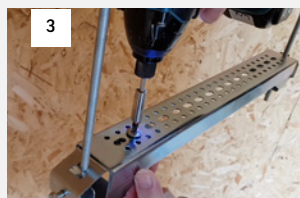
## Build a trapeze bracket in seconds



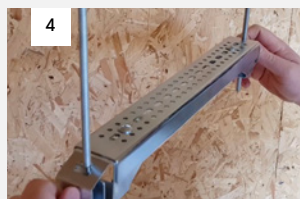
Slide adaptors over M8 or M10 threaded rod



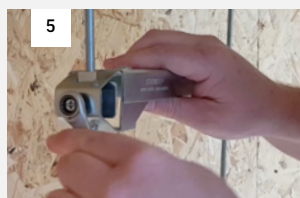
No hot works required when using pre-cut stud and channel



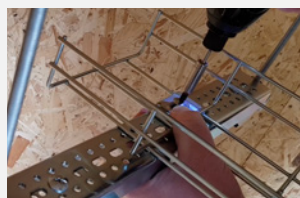
STUDBITE PH2  
Screws fix cable tray directly to channel support



Easily adjustable for levelling



Tighten to 2kN  
M8 SWL = 80kg  
M10 SWL = 120kg



Ready to fix basket or tray



scan to view how to build a trapeze bracket in seconds

# Building a trapeze support has never been easier





## Channel-to-Stud Trapeze Support Adaptor

✓ Compatible with M8/M10 stud and deep/shallow channel

- 75% LESS FIXINGS REQUIRED  
no nuts, washers or channel end caps needed
- No need to deburr stud ends
- No hot works when using pre-cut stud and channel
- Easily adjustable up and down stud

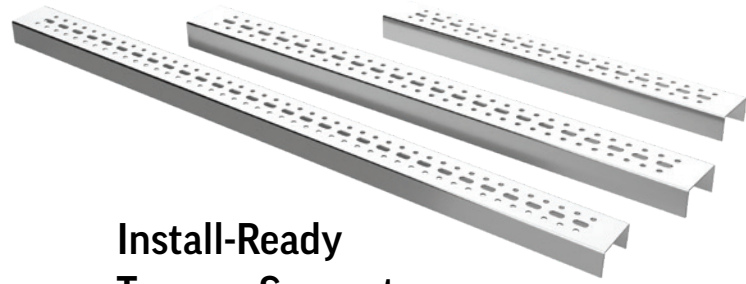
**SWL:** M8 Rod = 80kg • M10 Rod = 120kg  
with screws tightened to 2kN 3:1SF



5 Pairs (10 total)

**Code: FCS-TSA**

2.14kg box weight



## Install-Ready Trapeze Support

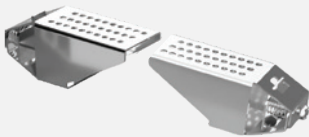
✓ Compatible with M8/M10 stud and deep/shallow channel

- 80% LESS FIXINGS REQUIRED  
no nuts, washers or channel end caps needed
- No need to deburr stud ends
- No hot works when using pre-cut stud and channel
- Easily adjustable up and down stud
- Use STUDBITE Screws to fix cable tray directly to channel support (Wire Basket clamp available for Basket Tray)
- 50 x 25 x 1.6 Channel

**SWL:** M8 Rod = 80kg • M10 Rod = 120kg  
with screws tightened to 2kN 3:1SF

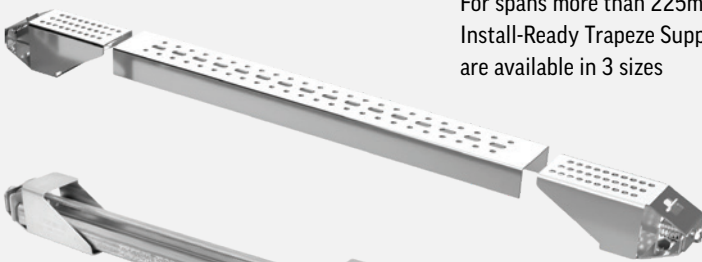


## Trapeze Build Options



For spans less than 225mm,  
the tray or basket can be **fitted  
directly onto the adaptors**

For spans more than 225mm,  
Install-Ready Trapeze Supports  
are available in 3 sizes



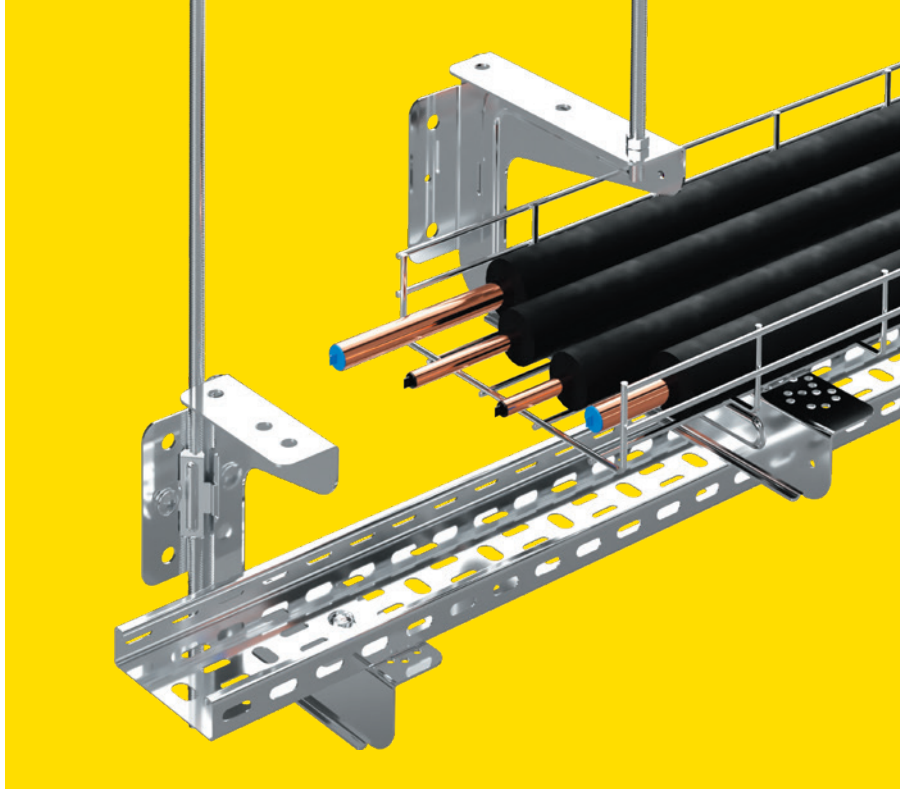
**Traditional channel can  
be used** by inverting the  
adaptor. Inverted channel  
adaptor clamp required



Pack of 10  
Inverted Channel  
Adaptor Clamp

**Code: FCS-CAC**

Channel/ Strut Size	Stud Centre	QTY per box	Weight per box	Code
300mm (12")	420mm	10	4.64kg	FCS-TS450
450mm (18")	555mm	10	6.05kg	FCS-TS450
600mm (24")	735mm	10	8.70kg	FCS-TS600



## Multi-Fix Single Stud Hanger

✓ Compatible with M8/M10 stud

- Multiple fixing options; top, side & base
- Unique retrofit feature – hanger can fix straight to side of M8/M10 existing stud
- No hot works when retrofitting or using pre-cut stud
- Easily adjustable up and down stud
- Use STUDBITE Screws to fix cable tray directly to the hanger
- The Wire Basket Clamp is used to fix basket tray to the hanger using the STUDBITE Screws

30KG SWL (M8 & M10 Rod) • 3:1 SF

Size	QTY per box	Weight per box	Code
100mm (4")	10	4.41kg	FCS-MSH100
150mm (6")	10	5.52kg	FCS-MSH150
225mm (9")	10	7.27kg	FCS-MSH225
300mm (12")	10	9.03kg	FCS-MSH300



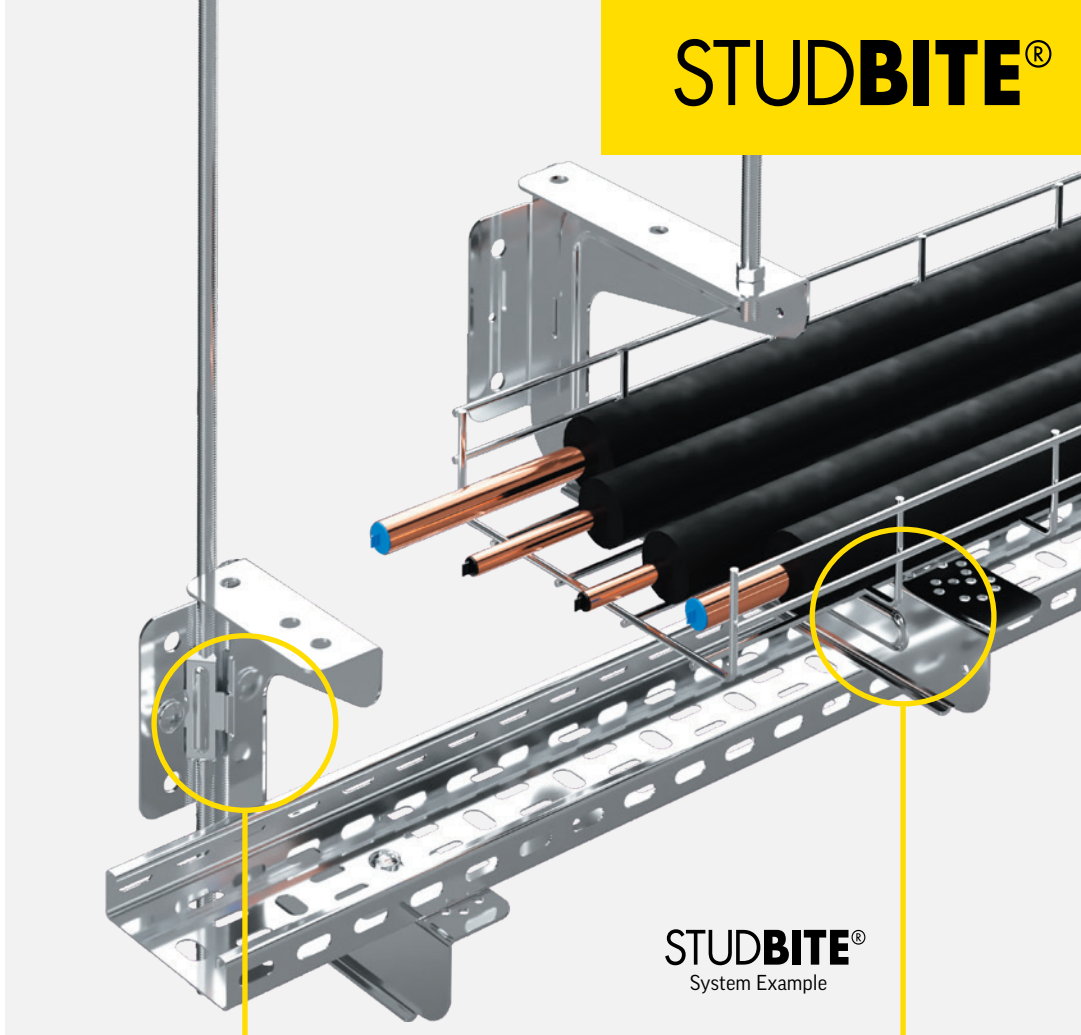
See next page for  
clamps and screws



scan to view how  
to build a single  
stud hanger



# STUDBITE®



## ALSO AVAILABLE



**Retro-Fit Clamp**  
Fixes hanger onto the  
side of M8/M10 stud

Pack of 10

Code: FCS-MSH-C



**STUDBITE®  
PH2 Screws**  
M6 x 10mm Trilobular  
self-thread screws

Box of 250

Code: FCS-B610

0.97kg box weight



**Basket Tray Clamp**  
Fixes wire basket to hanger

Pack of 10

Code: FCS-BTC