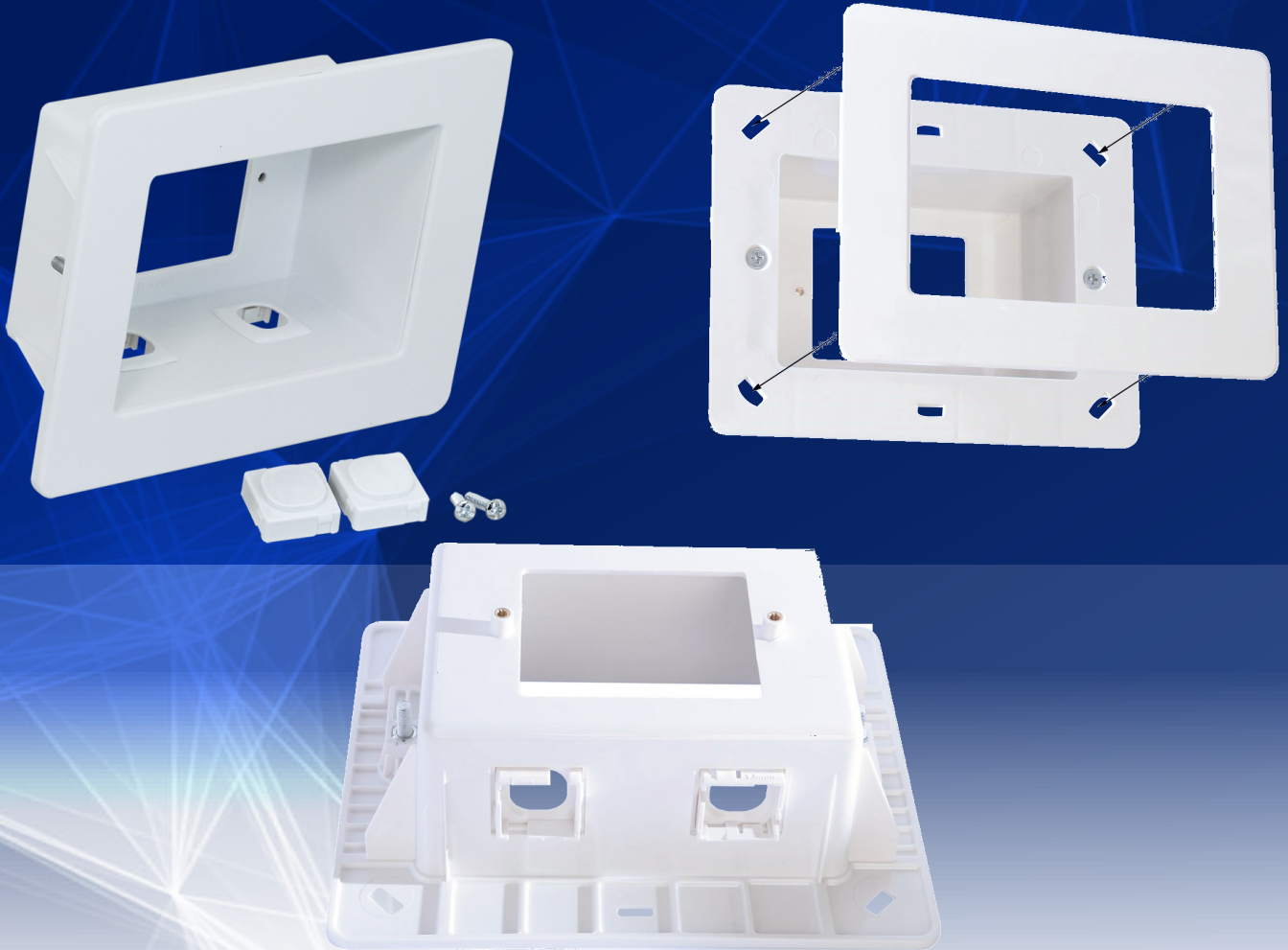


RECESSED WALL BOX



PRODUCT SPECIFICATIONS

- Suits any Australian standard power point or wall plate
- Includes 2 x Clipsal compatible mech holes with blank inserts
- Face Plate Dimension: 185mm x 145mm
- Hole Cut Out: 166mm x 100mm

Install Behind:

- TV's
- AV cabinets
- Fridges, Microwaves
- Tumble Dryers and Washing Machines

SUGGESTED INSERTS



WPRPS02

