



Insulputty/Epoxy Resin

FEATURES:

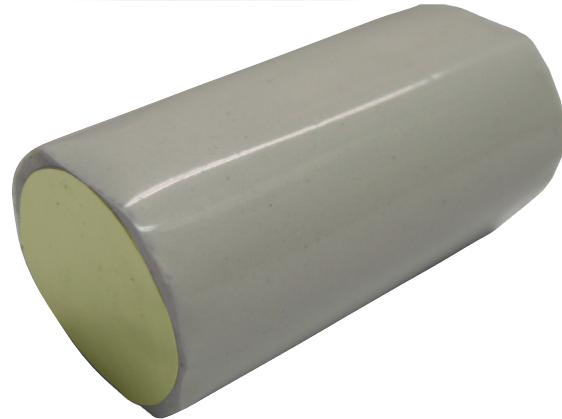
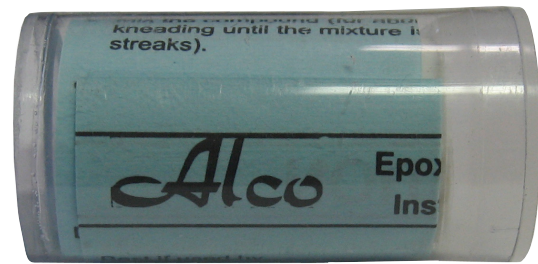
- Two part epoxy with yellow inner curing agent and white outer base material
- Ready mixable by kneading by hand or spatula
- Excellent mechanical and electrical characteristics
- Mix putty in two to five minutes
- Remains workable for approximately 45 minutes (at 23°C, workable life reduces as temp rises)
- Cures within one hour
- Cured material can be sanded and drilled

APPLICATIONS:

- Ideal for filling and sealing
- Bonds to most common cable insulating materials, metals and ceramics
- Approved for use with Alco barrier cable glands in hazardous areas
- Has the consistency of modelling clay, allowing it to be moulded and forced into cavities without any mess or spills

FUNCTION:

- Provides sealing where there are uneven contours
- Repairs rigid plastics and threaded holes
- Also suitable for hole filling and bonding



TECHNICAL DATA:

Storage	Store in a cool, dry place
Electrical Resistance	30,000M Ω (ASTM D 149)
Dielectric Strength	300v/mm at 6.4mm (ASTM D 149)
Shrinking During Cure	<1%

SPECIFICATIONS:

PART NUMBER	SUITS
ALCIP38	HAW20LR-B to HAW32B-B (1 unit)
ALCIP125	HAW40A-B to HAW50B-B (1 unit), HAW75A-B to HAW75B-B (2 units)
ALCIP180	HAW63A-B to HAW63B-B (1 unit), HAW90A-B to HAW90 B-B (2 units)

Wattmaster

THE BRAND ELECTRICIANS RELY ON

T: 1300 300 747 **F:** 1300 300 074

www.wattmaster.com.au